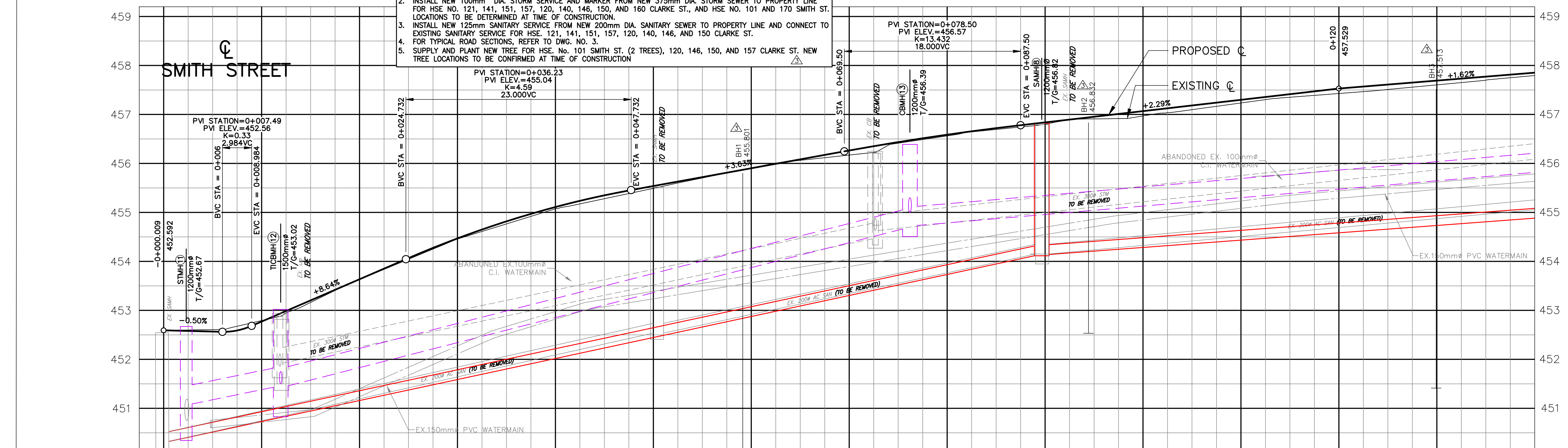


LEGEND:

- CONCRETE SIDEWALK
- DROP CURB
- BRICK PAVERS, 30mm SAND BASE & 200mm GRAN. "A"
- STONE WALKWAY, 150mm SAND BASE & 200mm GRAN. "A"
- 150mm GRAN. "A"
- 150mm GRAN. "B"
- 150mm CONCRETE, 150mm GRAN. "A"
- 50mm HL3F ASPHALT, 150mm GRAN. "A", 150mm GRAN. "B"
- SMITH STREET - 40mm HL3 (YEAR 2026), 50mm HL4, 50mm HL4
- TACTILE PLATE
- PROPOSED SANITARY SERVICE
- PROPOSED WATER SERVICE
- PROPOSED STORM SERVICE
- TREE REMOVAL
- PROPOSED STORM SEWER
- PROPOSED SANITARY SEWER
- PROPOSED WATERMAIN
- HYDRO POLE TO BE REMOVED
- PROPOSED HYDRO POLE
- PROPOSED GAS MAIN
- SUPPLY AND PLANT NEW TREE
- BOREHOLE LOCATIONS TAKEN FROM GEOTECHNICAL INVESTIGATION PREPARED BY SAFFA ENGINEERING INC. DATED MARCH 18, 2026

- NOTES:**
- INSTALL NEW 19mm WATER SERVICE FROM EXISTING 150mm DIA. WATERMAIN TO PROPERTY LINE AND CONNECT TO EXISTING WATER SERVICE FOR HSE. NO. 101 AND 170 SMITH STREET, 120, 121, 140, 141, 146, 150, 151, AND 157 CLARKE ST.
 - INSTALL NEW 100mm DIA. STORM SERVICE AND MARKER FROM NEW 375mm DIA. STORM SEWER TO PROPERTY LINE FOR HSE. NO. 121, 141, 151, 157, 170, 140, 146, 150, AND 160 CLARKE ST., AND HSE. NO. 101 AND 170 SMITH ST. LOCATIONS TO BE DETERMINED AT TIME OF CONSTRUCTION.
 - INSTALL NEW 125mm SANITARY SERVICE FROM NEW 200mm DIA. SANITARY SEWER TO PROPERTY LINE AND CONNECT TO EXISTING SANITARY SERVICE FOR HSE. 121, 141, 151, 157, 170, 140, 146, AND 150 CLARKE ST.
 - FOR TYPICAL ROAD SECTIONS, REFER TO DWG. NO. 3.
 - SUPPLY AND PLANT NEW TREE FOR HSE. NO. 101 SMITH ST. (2 TREES), 120, 146, 150, AND 157 CLARKE ST. NEW TREE LOCATIONS TO BE CONFIRMED AT TIME OF CONSTRUCTION.



STM	BM 450.75 N 451.0	9.0m-375mm# STORM SEWER @ 3.8%	64.3m-375mm# STORM SEWER @ 5.1%	75.0m-375mm# STORM SEWER @ 1.7%	STM							
SAN	N 450.330	89.6m-200mm# SANITARY SEWER @ 4.22%			97.0m-200mm# SANITARY SEWER @ 1.47%	SAN						
C	452.59	452.56	453.64	454.89	455.11	455.90	456.54	456.59	457.06	457.53	457.85	C
STA	0+000	0+007.49	0+020	0+036.23	0+040	0+060	0+078.50	0+080	0+100	0+120	0+140	STA

BM-5986-24-01 - 453.866
NAIL & WASHERS ON HP LOCATED ON THE NORTHWEST CORNER OF SMITH ST. & CLARKE ST.

BM-5986-24-02 - 456.625
NAIL & WASHERS ON HP IN FRONT OF HOUSE 121 ON THE WEST SIDE OF CLARKE ST.

DISCLAIMERS:

ALL EXISTING ELEVATIONS & DIMENSIONS TO BE CONFIRMED ON SITE. LOCATION OF UTILITIES IS APPROXIMATE ONLY AND SHOULD BE DETERMINED BY CONSULTING THE MUNICIPAL AUTHORITIES AND UTILITY COMPANIES CONCERNED. THE CONTRACTOR SHALL PROVE THE LOCATION OF UTILITIES AND SHALL BE RESPONSIBLE FOR ADEQUATE PROTECTION AGAINST DAMAGE.

TRITON ENGINEERING SERVICES LIMITED HAS MADE EVERY EFFORT TO ENSURE THE ACCURACY AND RELIABILITY OF THE INFORMATION PROVIDED, BUT ASSUMES NO RESPONSIBILITY FOR ANY CONSTRUCTION METHODS, TECHNIQUES, SEQUENCES, SAFETY MEASURES, OR CONTRACTOR PERFORMANCE RELATED TO THE IMPLEMENTATION OF THIS DESIGN. ANY DISCREPANCIES, CONFLICTS, OR REQUIRED CLARIFICATIONS MUST BE PROMPTLY REPORTED TO THE STAMPING ENGINEER/CONTRACT ADMINISTRATOR FOR RESOLUTION PRIOR TO PROCEEDING WITH CONSTRUCTION.

THIS DOCUMENT IS THE PROPERTY OF TRITON ENGINEERING SERVICES LIMITED AND SHALL NOT BE REPRODUCED IN WHOLE OR PART FOR ANY OTHER PROJECT WITHOUT WRITTEN AUTHORIZATION.

THIS DOCUMENT SHALL NOT BE USED FOR CONSTRUCTION UNLESS SIGNED AND SEALED FOR CONSTRUCTION.

No	DATE	REVISION	INITIAL
4	APR. 2026	ISSUED FOR PUBLIC INFORMATION	L.M.S.
3	MAR. 2026	ISSUED FOR TENDER (ADDENDUM No. 1)	L.M.S.
2	FEB. 2026	ISSUED FOR TENDER	L.M.S.
1	FEB. 2024	ISSUED FOR DESIGN REVIEW	L.M.S.

No	DATE	REVISION	INITIAL
4	APR. 2026	ISSUED FOR PUBLIC INFORMATION	L.M.S.
3	MAR. 2026	ISSUED FOR TENDER (ADDENDUM No. 1)	L.M.S.
2	FEB. 2026	ISSUED FOR TENDER	L.M.S.
1	FEB. 2024	ISSUED FOR DESIGN REVIEW	L.M.S.

**RECONSTRUCTION OF
CLARKE STREET**

(ARTHUR)

TOWNSHIP OF WELLINGTON NORTH
7490 SIDEROAD 7 WEST
KENILWORTH, ONTARIO N0G 2E0

PLAN AND PROFILE
STA. 0+000 to STA. 0+140

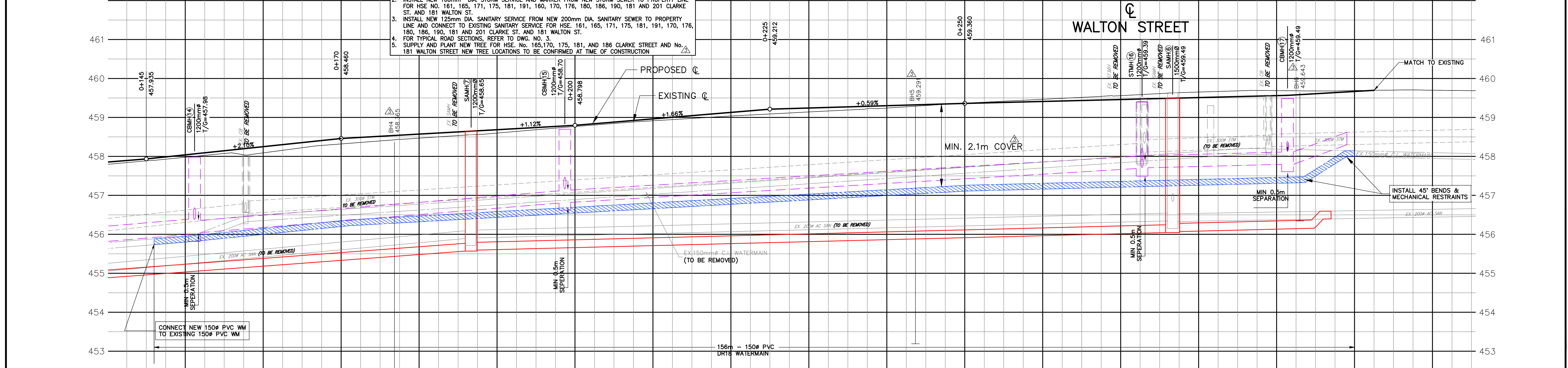
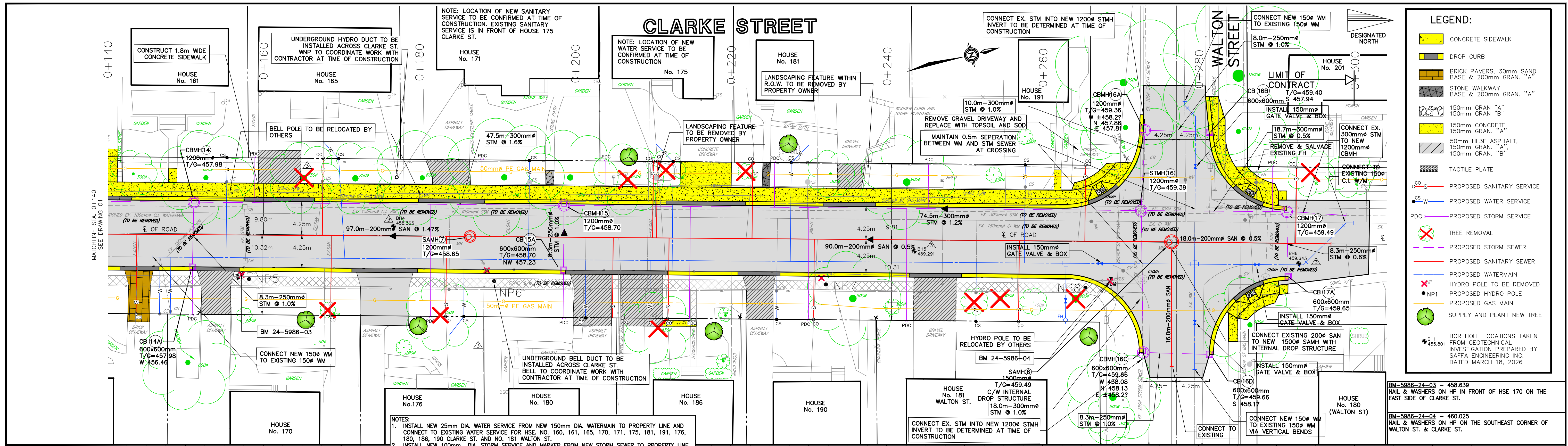
CONTRACT REF 2026-003
PROJECT No. M5986
DRAWN BY: J.P.Z.
CHECKED BY: L.M.S.
APPROVED BY: P.F.Z.
DATE: FEBRUARY 2024

TRITON ENGINEERING SERVICES LIMITED
Consulting Engineers

SCALE:
H: 1:250 H: 1:500
V: 1:50 V: 1:100
(245/87) (115/17)
UNLESS OTHERWISE SHOWN

DRAWING NUMBER **01**

ARCH full bleed D (36.00 x 24.00 inches)



Utility	Station	Size	Slope	Elevation
STM	0+140 - 0+160	75.0m-375mm	1.7%	457.85
STM	0+160 - 0+180	47.5m-300mm	1.6%	458.25
STM	0+180 - 0+200	47.5m-300mm	1.6%	458.46
STM	0+200 - 0+220	47.5m-300mm	1.6%	458.57
STM	0+220 - 0+240	74.0m-300mm	1.2%	459.13
STM	0+240 - 0+260	74.0m-300mm	1.2%	459.30
STM	0+260 - 0+280	18.7m-300mm	0.5%	459.36
STM	0+280 - 0+300	7.0m-300mm	0.5%	459.41
SAN	0+140 - 0+160	97.0m-200mm	1.47%	458.25
SAN	0+160 - 0+180	97.0m-200mm	1.47%	458.46
SAN	0+180 - 0+200	97.0m-200mm	1.47%	458.57
SAN	0+200 - 0+220	90.0m-200mm	0.5%	458.80
SAN	0+220 - 0+240	90.0m-200mm	0.5%	459.13
SAN	0+240 - 0+260	90.0m-200mm	0.5%	459.30
SAN	0+260 - 0+280	18.0m-200mm	0.5%	459.36
SAN	0+280 - 0+300	18.0m-200mm	0.5%	459.41
W	0+140 - 0+160	1200mm	1.0%	457.85
W	0+160 - 0+180	1200mm	1.0%	458.25
W	0+180 - 0+200	1200mm	1.0%	458.46
W	0+200 - 0+220	1200mm	1.0%	458.57
W	0+220 - 0+240	1200mm	1.0%	459.13
W	0+240 - 0+260	1200mm	1.0%	459.30
W	0+260 - 0+280	1200mm	1.0%	459.36
W	0+280 - 0+300	1200mm	1.0%	459.41
H2O	0+140 - 0+160	150mm	0.5%	457.85
H2O	0+160 - 0+180	150mm	0.5%	458.25
H2O	0+180 - 0+200	150mm	0.5%	458.46
H2O	0+200 - 0+220	150mm	0.5%	458.57
H2O	0+220 - 0+240	150mm	0.5%	459.13
H2O	0+240 - 0+260	150mm	0.5%	459.30
H2O	0+260 - 0+280	150mm	0.5%	459.36
H2O	0+280 - 0+300	150mm	0.5%	459.41

DISCLAIMERS:

ALL EXISTING ELEVATIONS & DIMENSIONS TO BE CONFIRMED ON SITE. LOCATION OF UTILITIES IS APPROXIMATE ONLY AND SHOULD BE DETERMINED BY CONSULTING THE MUNICIPAL AUTHORITIES AND UTILITY COMPANIES CONCERNED. THE CONTRACTOR SHALL PROVE THE LOCATION OF UTILITIES AND SHALL BE RESPONSIBLE FOR ADEQUATE PROTECTION AGAINST DAMAGE.

TRITON ENGINEERING SERVICES LIMITED HAS MADE EVERY EFFORT TO ENSURE THE ACCURACY AND RELIABILITY OF THE INFORMATION PROVIDED, BUT ASSUMES NO RESPONSIBILITY FOR ANY CONSTRUCTION METHODS, TECHNIQUES, SEQUENCES, SAFETY MEASURES, OR CONTRACTOR PERFORMANCE RELATED TO THE IMPLEMENTATION OF THIS DESIGN. ANY DISCREPANCIES, CONFLICTS, OR REQUIRED CLARIFICATIONS MUST BE PROMPTLY REPORTED TO THE STAMPING ENGINEER/CONTRACT ADMINISTRATOR FOR RESOLUTION PRIOR TO PROCEEDING WITH CONSTRUCTION.

THIS DOCUMENT IS THE PROPERTY OF TRITON ENGINEERING SERVICES LIMITED AND SHALL NOT BE REPRODUCED IN WHOLE OR PART FOR ANY OTHER PROJECT WITHOUT WRITTEN AUTHORIZATION.

RECONSTRUCTION OF CLARKE STREET

(ARTHUR)

TOWNSHIP OF WELLINGTON NORTH
7490 SIDEROAD 7 WEST
KENILWORTH, ONTARIO N0G 2E0

PLAN AND PROFILE
STA. 0+140 TO STA. 0+300

No	DATE	REVISION	INITIAL
4	APR. 2026	ISSUED FOR PUBLIC INFORMATION	L.M.S.
3	MAR. 2026	ISSUED FOR TENDER (ADDENDUM No. 1)	L.M.S.
2	FEB. 2026	ISSUED FOR TENDER	L.M.S.
1	FEB. 2024	ISSUED FOR DESIGN REVIEW	L.M.S.

CONTRACT REF: 2026-003

PROJECT No: M5986

DRAWN BY: J.P.Z.

CHECKED BY: L.M.S.

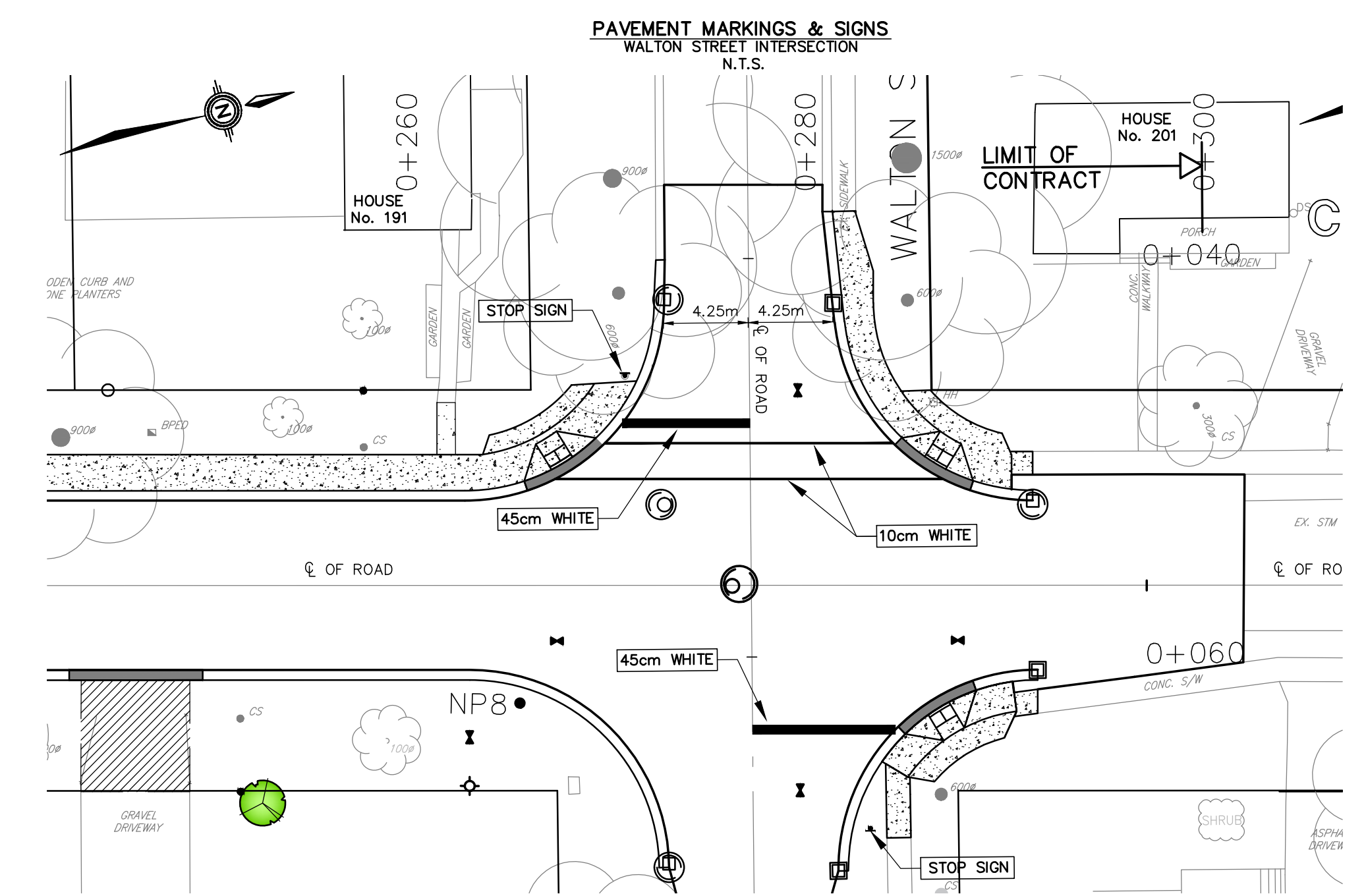
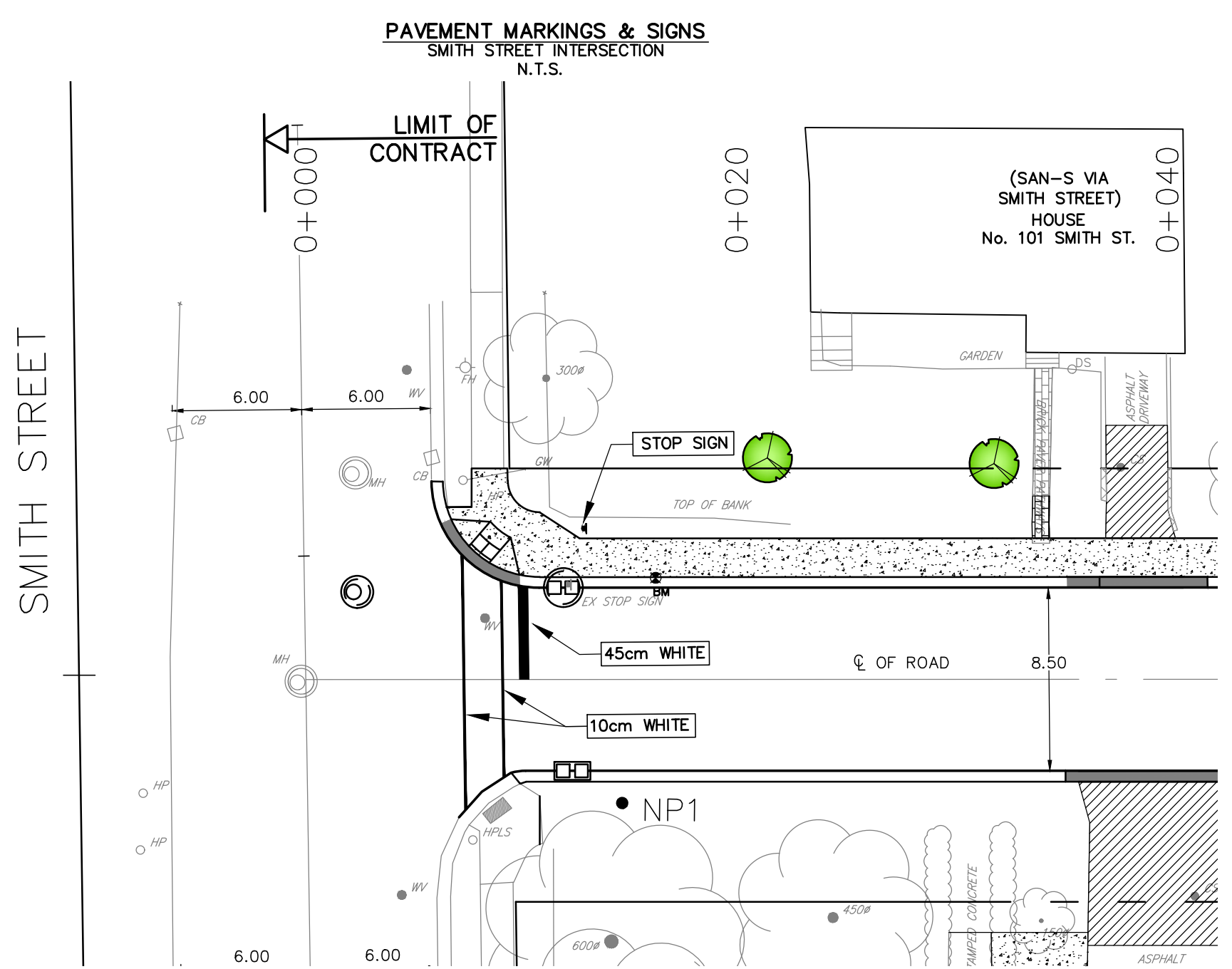
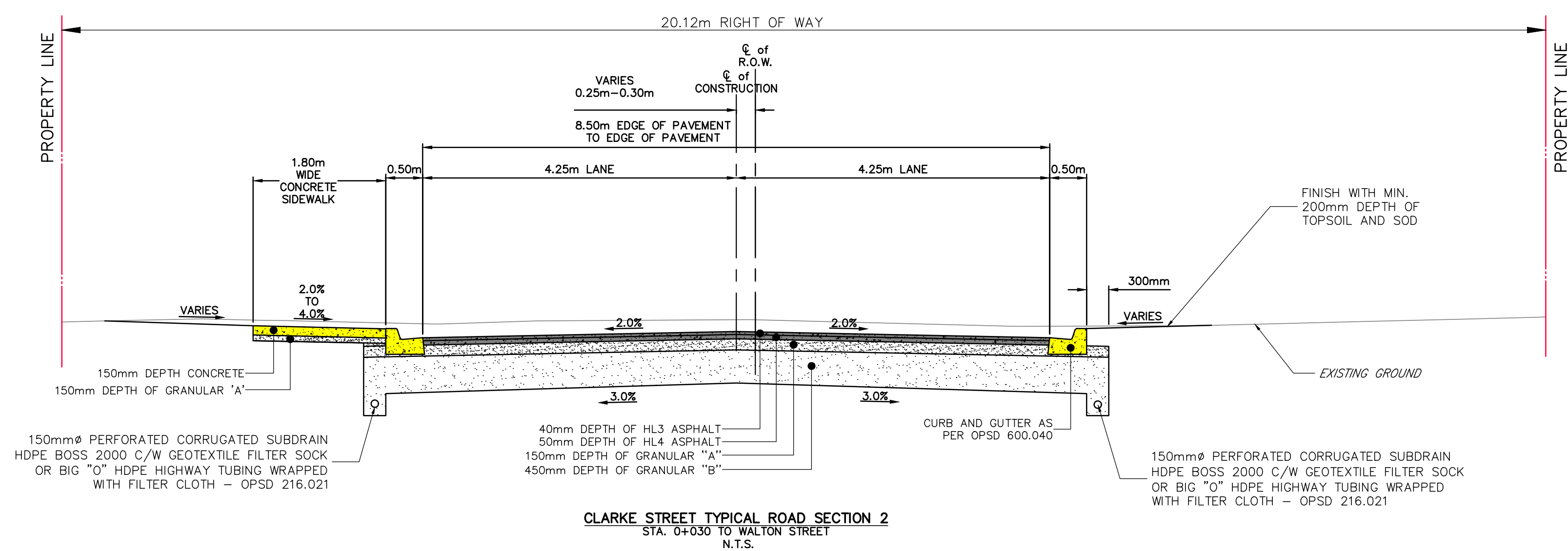
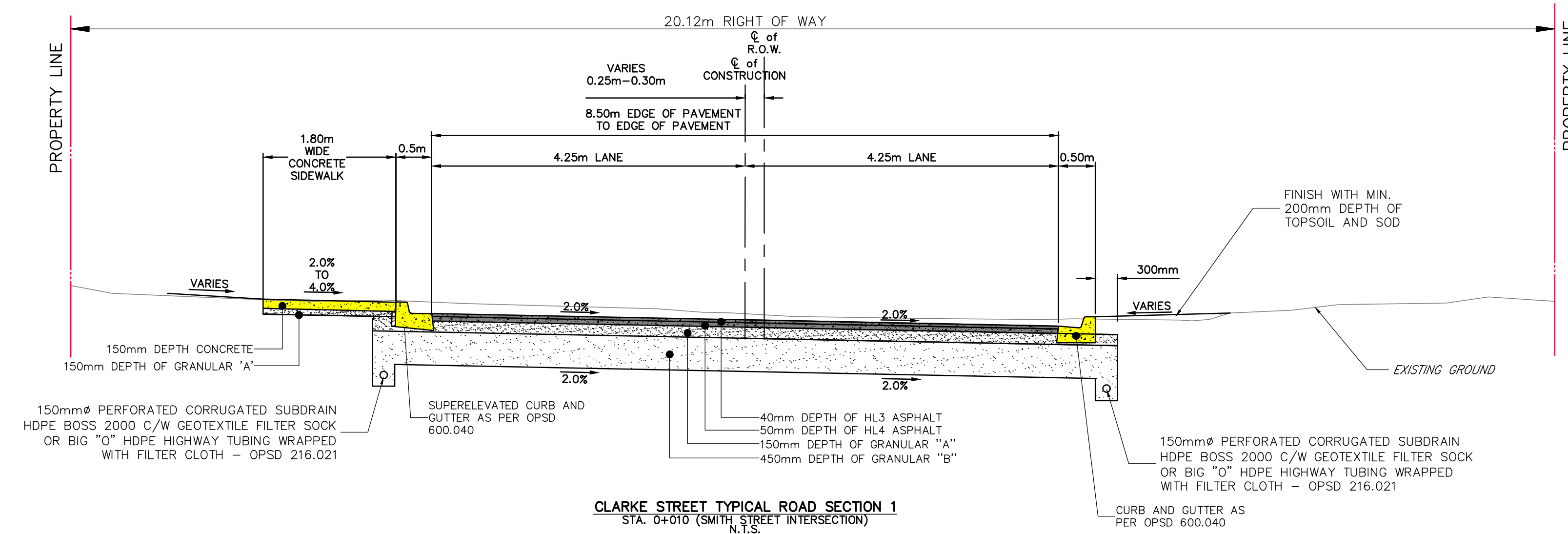
APPROVED BY: P.F.Z.

DATE: FEB 2024

TRITON ENGINEERING SERVICES LIMITED
Consulting Engineers

SCALE:
H: 1:250 H: 1:500
V: 1:50 V: 1:100
(245/87) (11/117)
UNLESS OTHERWISE SHOWN

DRAWING NUMBER **02**



DISCLAIMERS:
 1. ALL EXISTING ELEVATIONS & DIMENSIONS TO BE CONFIRMED ON SITE. THE LOCATION OF UTILITIES IS APPROXIMATE ONLY AND SHOULD BE DETERMINED BY CONSULTING THE MUNICIPAL AUTHORITIES AND UTILITY COMPANIES CONCERNED. THE CONTRACTOR SHALL PROVE THE LOCATION OF UTILITIES AND SHALL BE RESPONSIBLE FOR ADEQUATE PROTECTION AGAINST DAMAGE.

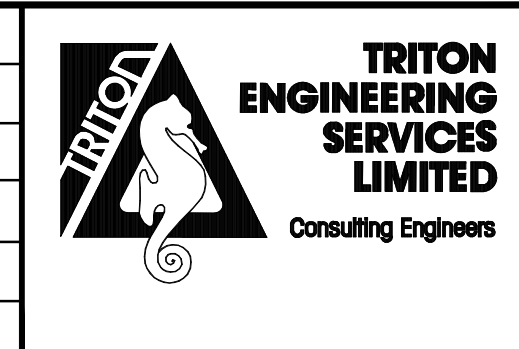
No	DATE	REVISION	INITIAL
4	APR. 2026	ISSUED FOR PUBLIC INFORMATION	L.M.S.
3	MAR. 2026	ISSUED FOR TENDER (ADDENDUM No. 1)	L.M.S.
2	FEB. 2026	ISSUED FOR TENDER	L.M.S.
1	FEB. 2024	ISSUED FOR DESIGN REVIEW	L.M.S.

**RECONSTRUCTION OF
CLARKE STREET
(ARTHUR)**

**TOWNSHIP OF WELLINGTON NORTH
7490 SIDEROAD 7 WEST
KENILWORTH, ONTARIO N0G 2E0**

TYPICAL ROAD SECTIONS
PAVEMENT MARKINGS & SIGNS

CONTRACT No.	5986-XX
PROJECT No.	M5986
DRAWN BY:	J.P.Z.
CHECKED BY:	L.M.S.
APPROVED BY:	P.F.Z.
DATE:	FEB 2024



SCALE:
N.T.S.
UNLESS OTHERWISE SHOWN

DRAWING NUMBER
03