

STM	16.6m-450mm ^Ø STORM SEWER @ 0.5%	75.6m-375mm ^Ø STORM SEWER @ 0.5%	54.8m-300mm ^Ø STORM SEWER @ 0.5%	STM															
SAN	12.6m-200mm ^Ø PVC DR35 SANITARY SEWER @ 0.5%	71.8m-200mm ^Ø PVC DR35 SANITARY SEWER @ 0.5%	75.1m-200mm ^Ø PVC DR35 SANITARY SEWER @ 0.5%	SAN															
EL	464.96	464.93	465.04	465.14	465.19	465.25	465.30	465.35	465.40	465.46	465.51	465.56	465.61	465.66	465.71	465.76	465.81		
STA	1+000	1+010	1+020	1+030	1+040	1+050	1+060	1+070	1+080	1+090	1+100	1+110	1+120	1+130	1+140	1+150	1+160	1+170	1+180

DISCLAIMERS:
 1. ALL EXISTING ELEVATIONS & DIMENSIONS TO BE CONFIRMED ON SITE. THE LOCATION OF UTILITIES IS APPROXIMATE ONLY AND SHOULD BE DETERMINED BY CONSULTING THE MUNICIPAL AUTHORITIES AND UTILITY COMPANIES CONCERNED. THE CONTRACTOR SHALL PROVE THE LOCATION OF UTILITIES AND SHALL BE RESPONSIBLE FOR ADEQUATE PROTECTION AGAINST DAMAGE.

No	DATE	REVISION	INITIAL
3	MAY 2026	ISSUED FOR PUBLIC INFORMATION	L.M.S.
2	2025/11/27	ISSUED FOR REVIEW	L.M.S.
1	2024/12/23	ISSUED FOR INFORMATION	L.M.S.

PRELIMINARY

CONSTRUCTION OF
 DRAPER ST AND ANDERSON AVE
 TOWNSHIP OF WELLINGTON NORTH
 ARTHUR

TOWNSHIP OF WELLINGTON NORTH
 7490 SIDEROAD 7 WEST
 KENILWORTH, ON N0G 2E0

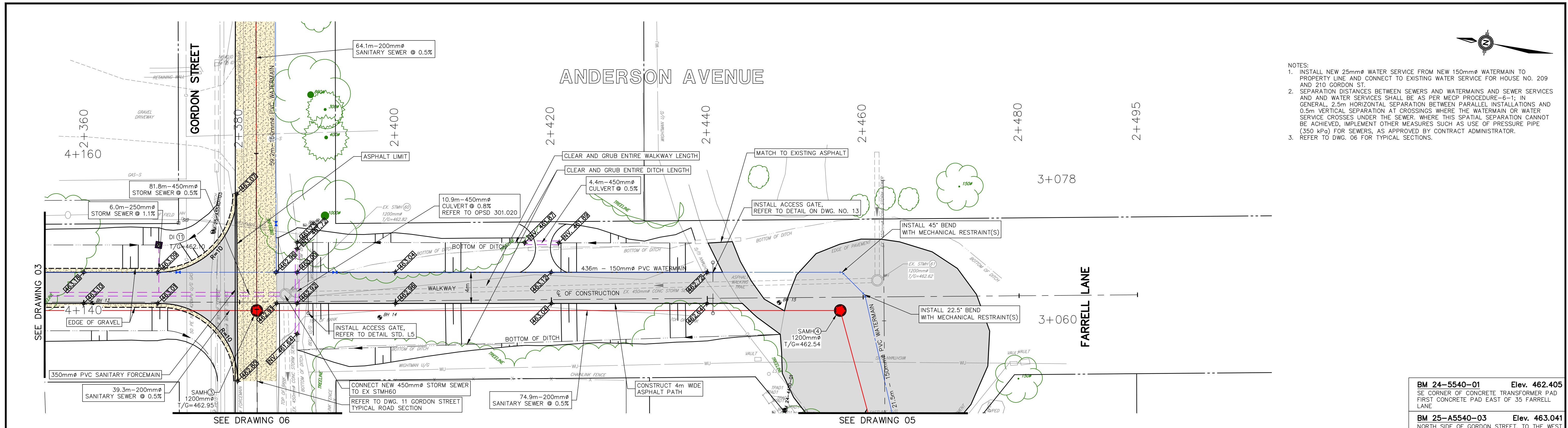
DRAPER ST PLAN AND PROFILE
 STA. 1+000 TO STA. 1+180

CONTRACT No. RT 2025-004		SCALE: H: 1:250 V: 1:50 UNLESS OTHERWISE SHOWN
PROJECT No. A5540E		
DRAWN BY: M.B.W.		
CHECKED BY: P.F.Z.		
APPROVED BY: L.S.	DATE: NOVEMBER 2024	

ARCH full bleed D (36.00 x 24.00 inches)

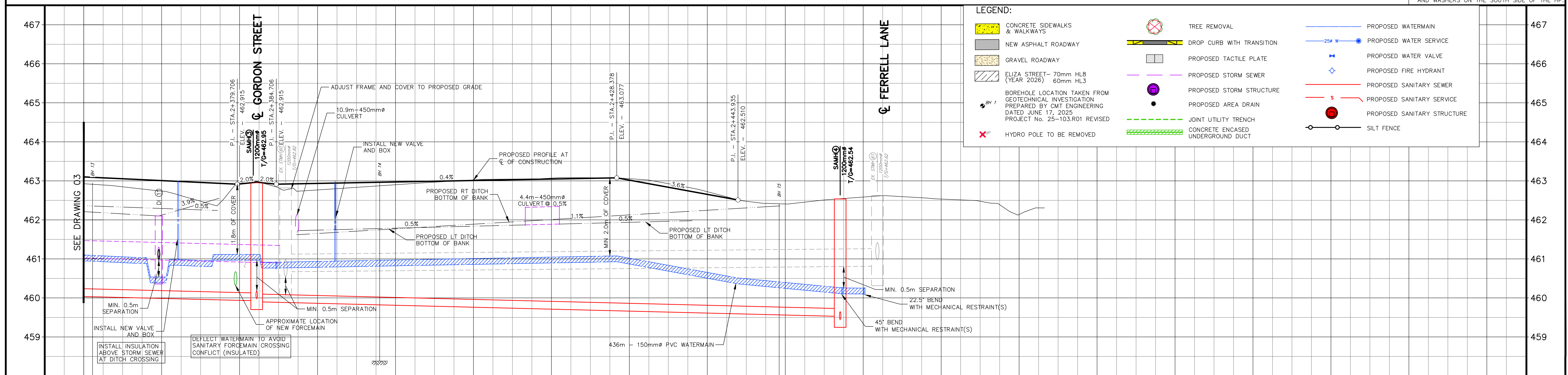


- NOTES:
1. INSTALL NEW 25mm ϕ WATER SERVICE FROM NEW 150mm ϕ WATERMAIN TO PROPERTY LINE AND CONNECT TO EXISTING WATER SERVICE FOR HOUSE NO. 209 AND 210 GORDON ST.
 2. SEPARATION DISTANCES BETWEEN SEWERS AND WATERMANS AND SEWER SERVICES AND WATER SERVICES SHALL BE AS PER MECP PROCEDURE-6-1; IN GENERAL, 2.5m HORIZONTAL SEPARATION BETWEEN PARALLEL INSTALLATIONS AND 0.5m VERTICAL SEPARATION AT CROSSINGS WHERE THE WATERMAIN OR WATER SERVICE CROSSES UNDER THE SEWER. WHERE THIS SPATIAL SEPARATION CANNOT BE ACHIEVED, IMPLEMENT OTHER MEASURES SUCH AS USE OF PRESSURE PIPE (350 kPa) FOR SEWERS, AS APPROVED BY CONTRACT ADMINISTRATOR.
 3. REFER TO DWG. 06 FOR TYPICAL SECTIONS.



BM 24-5540-01 Elev. 462.05
SE CORNER OF CONCRETE TRANSFORMER PAD
FIRST CONCRETE PAD EAST OF 35 FARRELL
LANE

BM 25-A5540-03 Elev. 463.041
NORTH SIDE OF GORDON STREET, TO THE WEST
OF THE DRIVEWAY OF HOUSE NO. UNK, NAIL
AND WASHERS ON THE SOUTH SIDE OF THE HP.



STM	81.8m-450mm ϕ STORM SEWER @ 0.5%		74.9m-200mm ϕ PVC DR35 SANITARY SEWER @ 0.5%		STM														
SAN	39.3m-200mm ϕ PVC DR35 SANITARY SEWER @ 0.5%				SAN														
E	463.10	463.01	462.91	462.82	462.71	462.65	462.51	462.41	462.30	462.20	462.14	462.05							
STA	2+360	2+370	2+378.71	2+380	2+382.20	2+384.71	2+390	2+400	2+410	2+420	2+428.38	2+430	2+440	2+443.93	2+450	2+460	2+470	2+480	2+490

DISCLAIMERS:
1. ALL EXISTING ELEVATIONS & DIMENSIONS TO BE CONFIRMED ON SITE. THE LOCATION OF UTILITIES IS APPROXIMATE ONLY AND SHOULD BE DETERMINED BY CONSULTING THE MUNICIPAL AUTHORITIES AND UTILITY COMPANIES CONCERNED. THE CONTRACTOR SHALL PROVE THE LOCATION OF UTILITIES AND SHALL BE RESPONSIBLE FOR ADEQUATE PROTECTION AGAINST DAMAGE.

No	DATE	REVISION	INITIAL
3	MAY 2026	ISSUED FOR PUBLIC INFORMATION	L.M.S.
2	2025/11/27	ISSUED FOR REVIEW	L.M.S.
1	2024/12/23	ISSUED FOR INFORMATION	L.M.S.

PRELIMINARY

CONSTRUCTION OF
DRAPER ST AND ANDERSON AVE
TOWNSHIP OF WELLINGTON NORTH
ARTHUR

TOWNSHIP OF WELLINGTON NORTH
7490 SIDEROAD 7 WEST
KENILWORTH, ON N0G 2E0

ANDERSON AVE. PLAN AND PROFILE
STA. 2+360 to STA. 2+495

CONTRACT No. RT 2025-004
PROJECT No. A5540E
DRAWN BY: M.B.W.
CHECKED BY: P.F.Z.
APPROVED BY: L.S.
DATE: MONTH YEAR

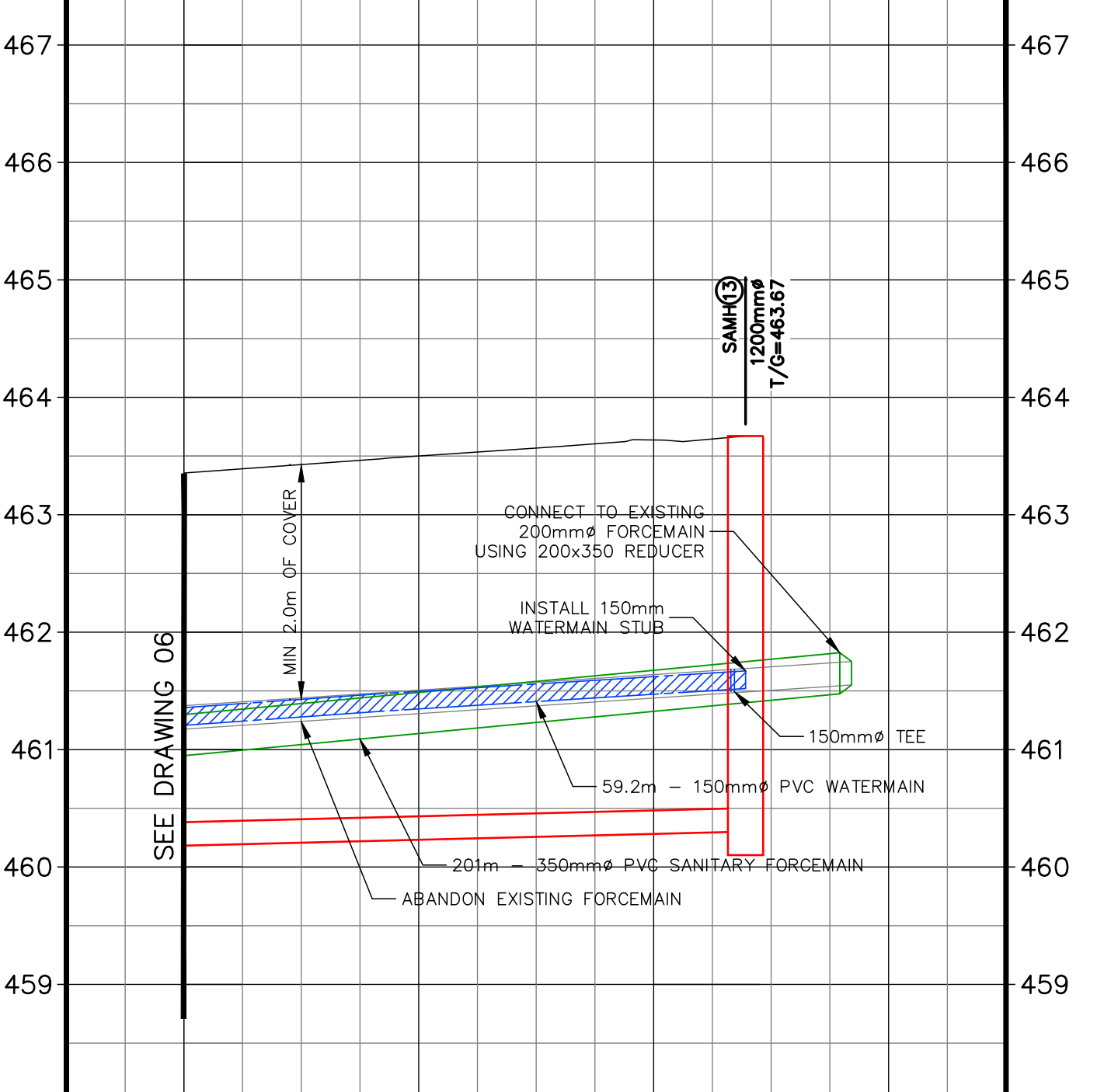
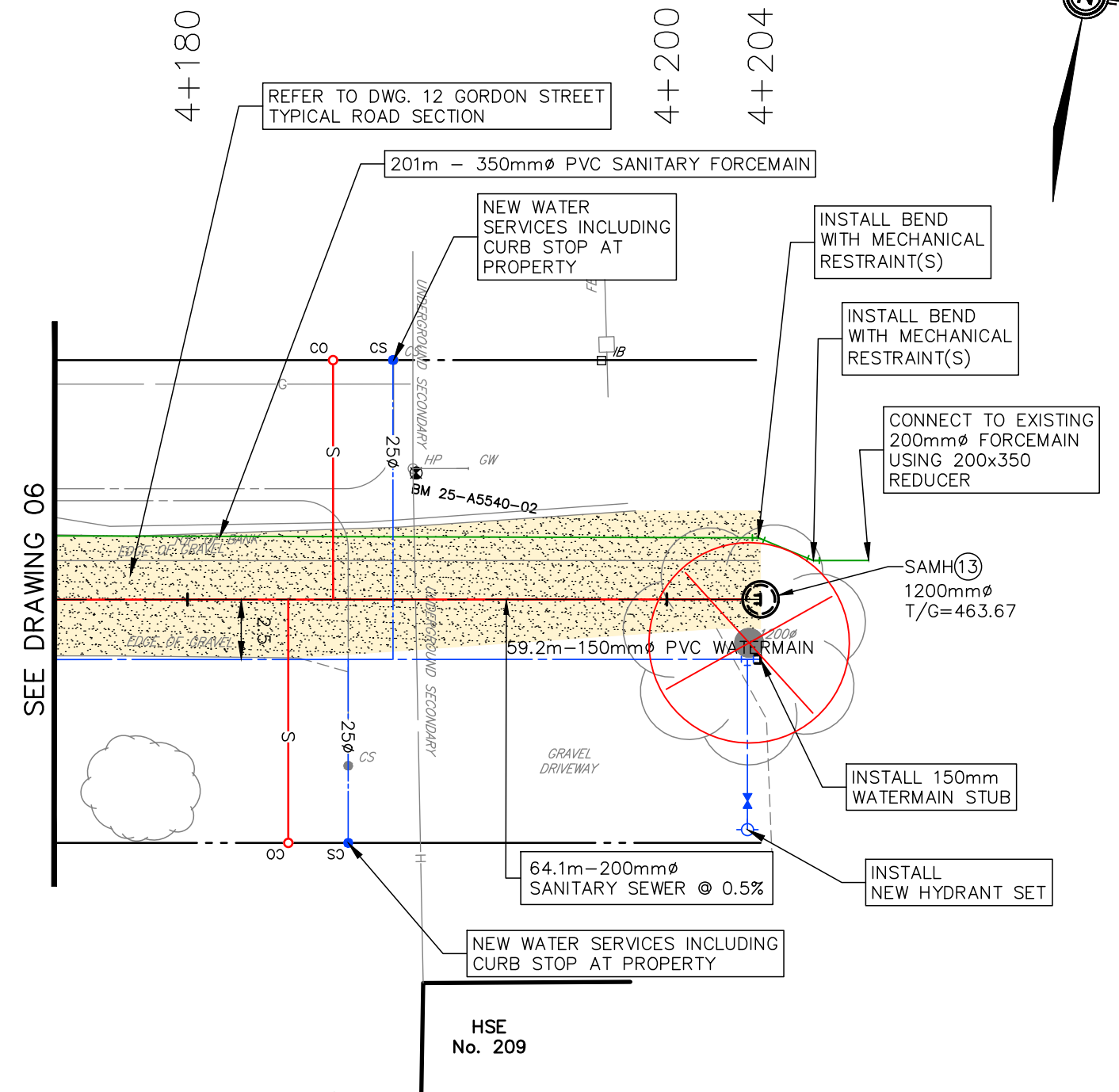


SCALE:
H: 1:250 H: 1:500
V: 1:50 V: 1:100
(845/87) (11/117)
UNLESS OTHERWISE SHOWN

DRAWING NUMBER **04**

ARCH full bleed D (36.00 x 24.00 inches)

GORDON STREET



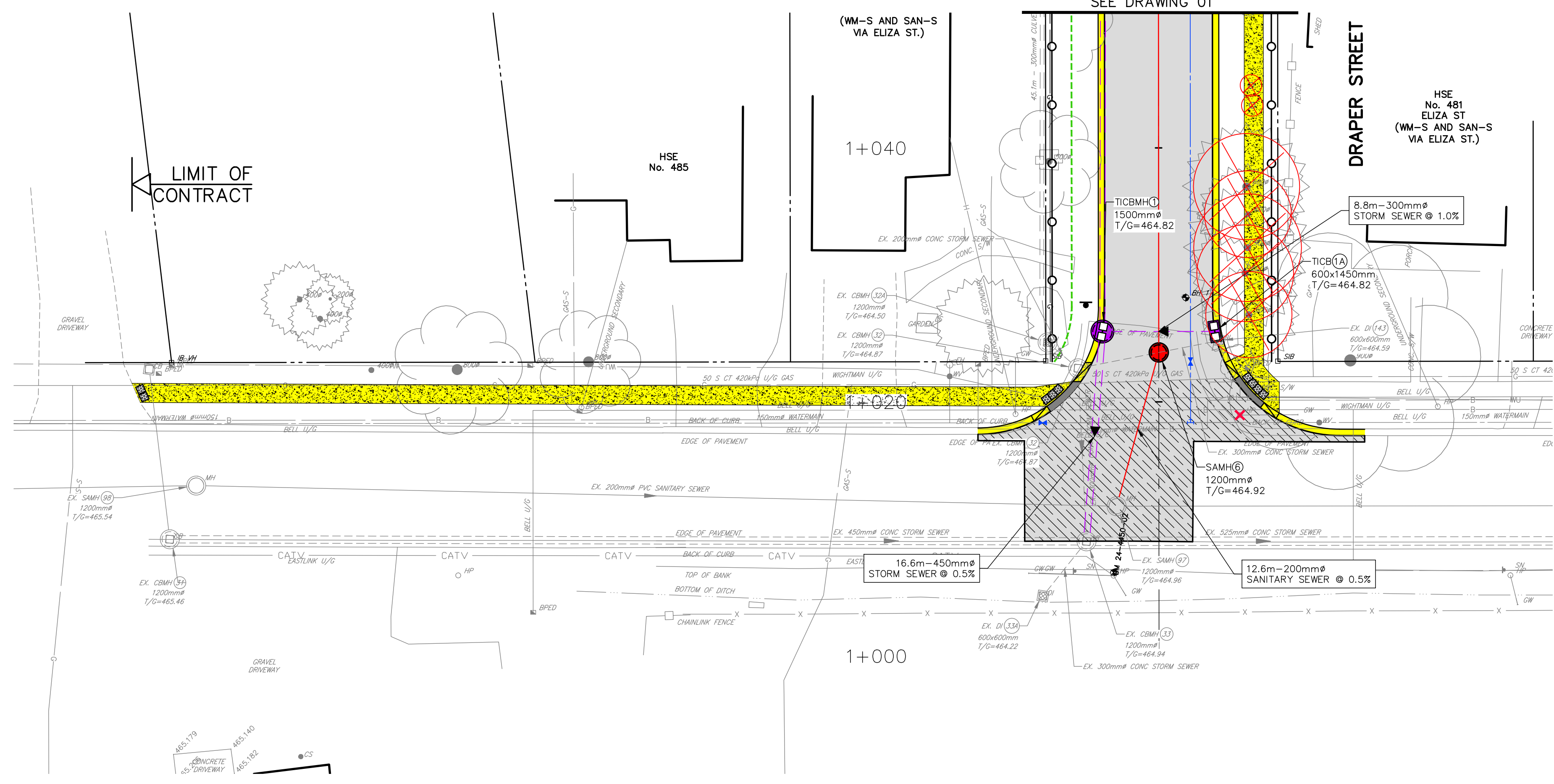
STM			STM
SAN	3	64.1m - 200mm PVC DR35 SANITARY SEWER @ 0.5%	SAN
€	483.36	483.64	€
	4+180	4+200	STA

DISCLAIMERS:			
1. ALL EXISTING ELEVATIONS & DIMENSIONS TO BE CONFIRMED ON SITE. THE LOCATION OF UTILITIES IS APPROXIMATE ONLY AND SHOULD BE DETERMINED BY CONSULTING THE MUNICIPAL AUTHORITIES AND UTILITY COMPANIES CONCERNED. THE CONTRACTOR SHALL PROVE THE LOCATION OF UTILITIES AND SHALL BE RESPONSIBLE FOR ADEQUATE PROTECTION AGAINST DAMAGE.			
No	DATE	REVISION	INITIAL
2	MAY 2026	ISSUED FOR PUBLIC INFORMATION	L.M.S.
1	2025/11/27	ISSUED FOR REVIEW	L.M.S.

LEGEND:

- CONCRETE SIDEWALKS & WALKWAYS
- NEW ASPHALT ROADWAY
- GRAVEL ROADWAY
- ELIZA STREET - 70mm HL8 60mm HL3
- BOREHOLE LOCATION TAKEN FROM GEOTECHNICAL INVESTIGATION PREPARED BY CMT ENGINEERING DATED JUNE 17, 2025 PROJECT No. 25-103.R01 REVISED
- HYDRO POLE TO BE REMOVED
- TREE REMOVAL
- DROP CURB WITH TRANSITION
- PROPOSED TACTILE PLATE
- PROPOSED STORM SEWER
- PROPOSED STORM STRUCTURE
- PROPOSED AREA DRAIN
- JOINT UTILITY TRENCH
- CONCRETE ENCASED UNDERGROUND DUCT
- PROPOSED WATERMAIN
- PROPOSED WATER SERVICE
- PROPOSED WATER VALVE
- PROPOSED FIRE HYDRANT
- PROPOSED SANITARY SEWER
- PROPOSED SANITARY SERVICE
- PROPOSED SANITARY STRUCTURE
- SILT FENCE

ELIZA STREET



BM 24-5540-02 Elev. 465.521
 NAIL IN EAST FACE OF HP LOCATED ON THE WEST SIDE OF ELIZA STREET IN BETWEEN HOUSES 483 AND 481 ELIZA STREET

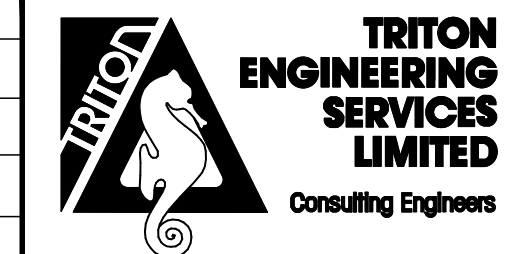
BM 25-A5540-02 Elev. 463.763
 NORTH SIDE OF GORDON ST, EAST OF THE DRIVEWAY FOR HOUSE NO. UNK, NAIL AND WASHERS ON THE SOUTH SIDE OF THE HP.

PRELIMINARY

CONSTRUCTION OF
 DRAPER ST AND ANDERSON AVE
 TOWNSHIP OF WELLINGTON NORTH
 ARTHUR

TOWNSHIP OF WELLINGTON NORTH
 7490 SIDEROAD 7 WEST
 KENILWORTH, ON NOG 2E0
ELIZA STREET SIDEWALK PLAN

CONTRACT No.	RT 2025-004
PROJECT No.	A5540E
DRAWN BY:	M.B.W.
CHECKED BY:	P.F.Z.
APPROVED BY:	L.S.
DATE:	NOVEMBER 2024



SCALE:	
H: 1:250	H: 1:500
V: 1:50	V: 1:100
(845.87)	(113.17)
UNLESS OTHERWISE SHOWN	
DRAWING NUMBER	07

ARCH full bleed D (36.00 x 24.00 inches)

