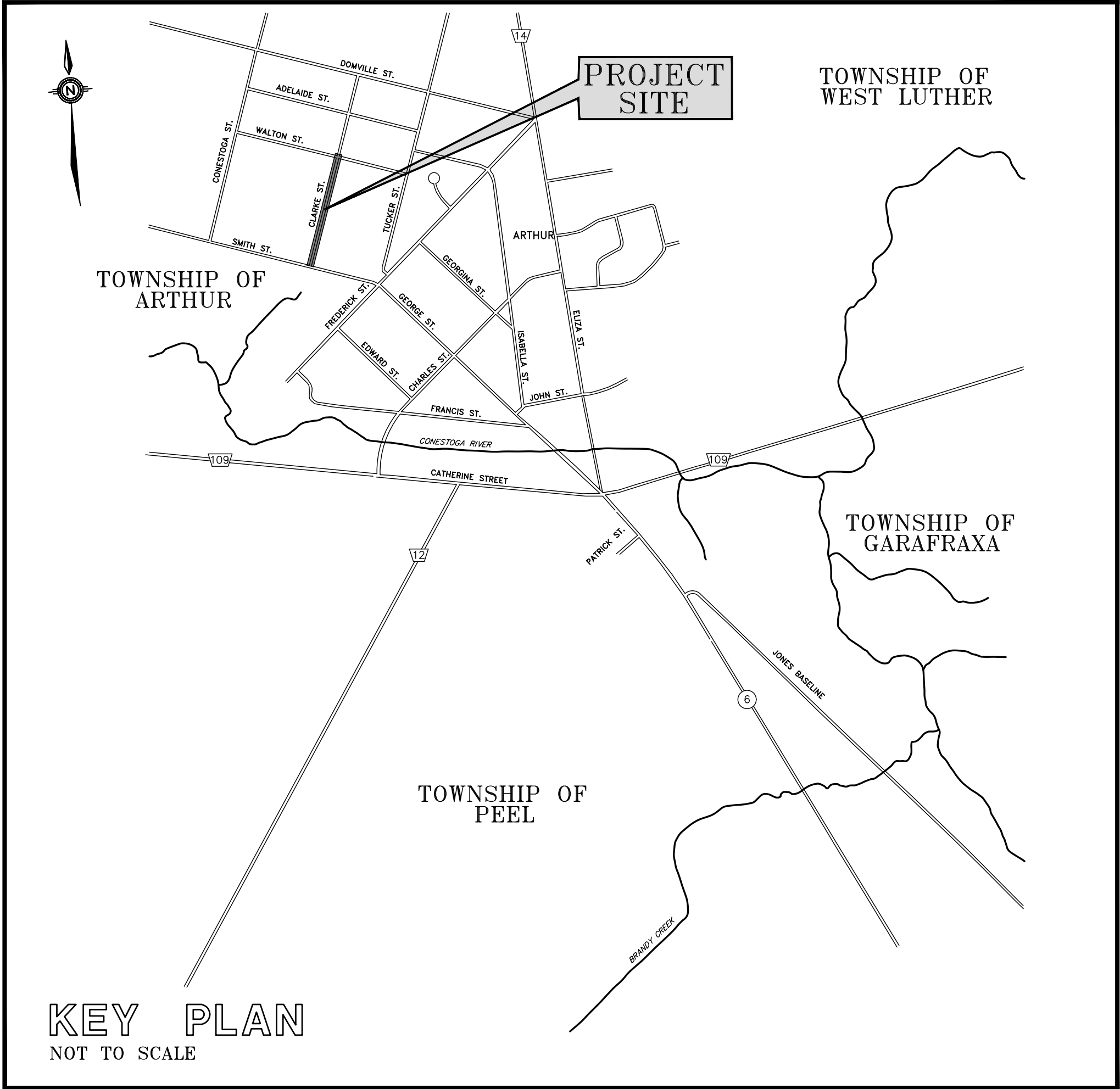


# TOWNSHIP OF WELLINGTON NORTH



## RECONSTRUCTION OF **CLARKE STREET** **[ARTHUR]**

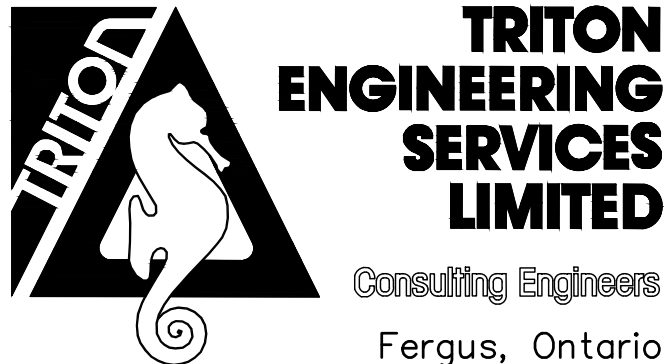
CONTRACT No. RFT 2026-003

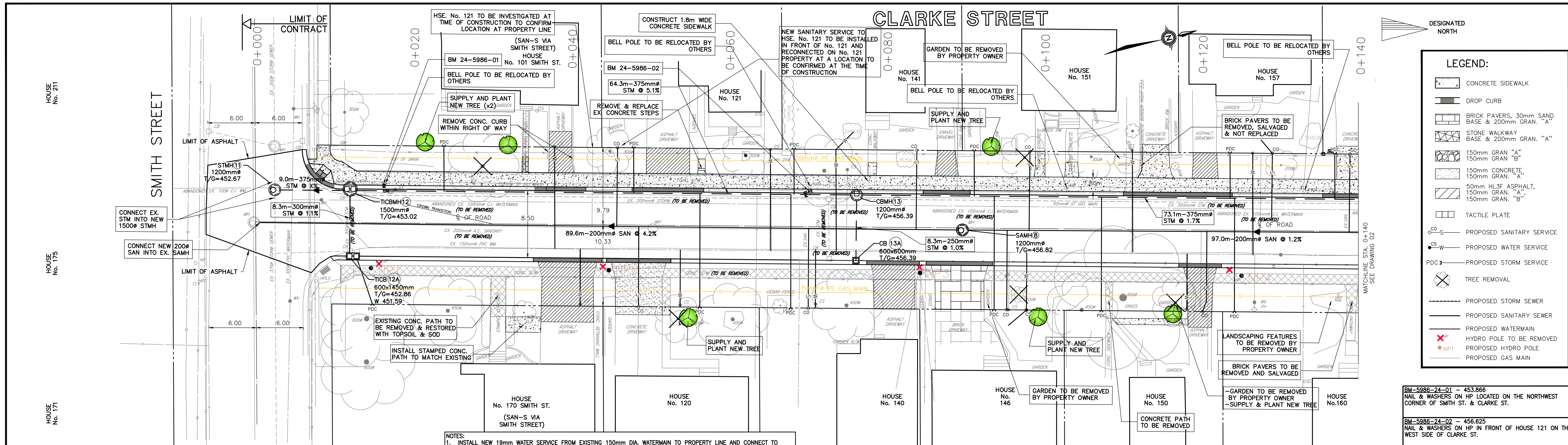


### LIST OF DRAWINGS

- 01 - PLAN AND PROFILE  
STA. 0+000 TO STA. 0+140
- 02 - PLAN AND PROFILE  
STA. 0+140 TO STA. 0+300
- 03 - TYPICAL ROAD SECTIONS  
PAVEMENT MARKINGS & SIGNS

ISSUED FOR DESIGN REVIEW	-	FEB. 2024
ISSUED FOR TENDER	-	FEB. 2026
ISSUED FOR CONSTRUCTION	-	
AS RECORDED	-	

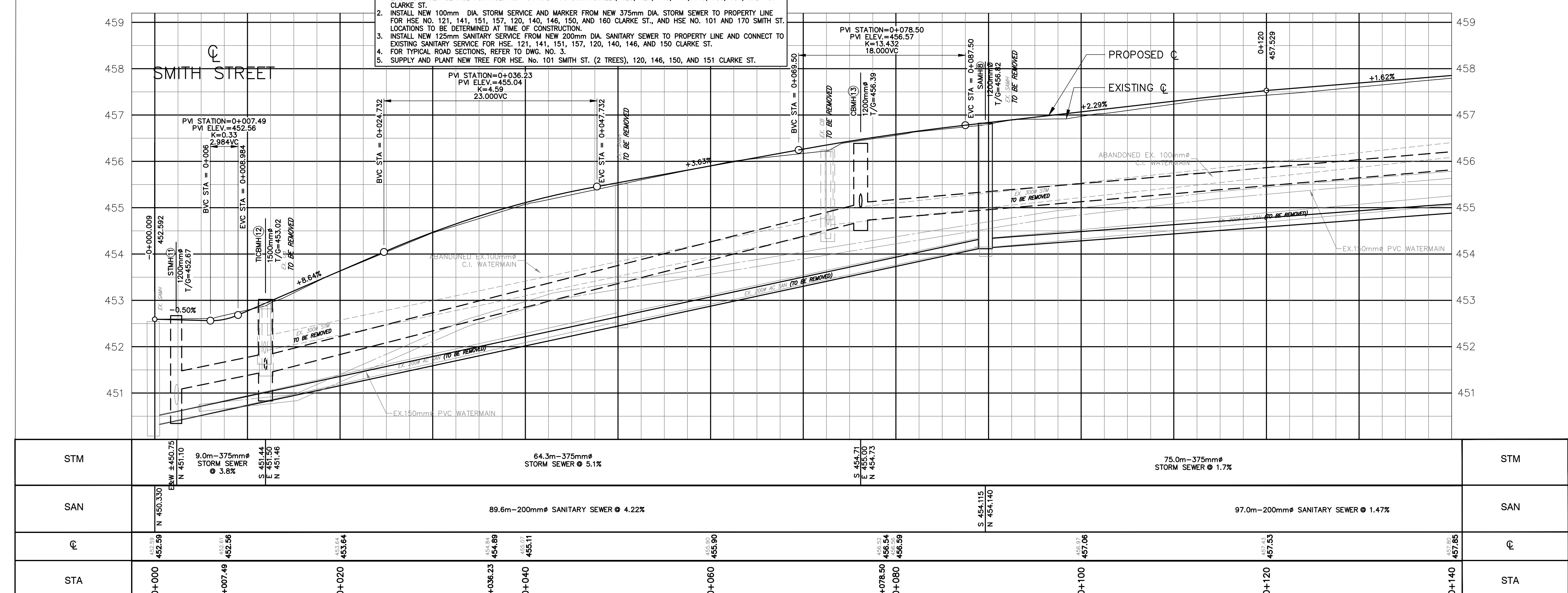




- NOTES:
1. INSTALL NEW 19mm WATER SERVICE FROM EXISTING 150mm DIA. WATERMAIN TO PROPERTY LINE AND CONNECT TO EXISTING WATER SERVICE FOR HSE. No. 101 AND 170 SMITH STREET, 120, 121, 140, 141, 146, 150, 151, AND 157 CLARKE ST.
  2. INSTALL NEW 100mm DIA. STORM SERVICE AND MARKER FROM NEW 375mm DIA. STORM SEWER TO PROPERTY LINE FOR HSE. No. 121, 141, 151, 157, 120, 140, 146, 150, AND 160 CLARKE ST., AND HSE. No. 101 AND 170 SMITH ST. LOCATIONS TO BE DETERMINED AT TIME OF CONSTRUCTION.
  3. INSTALL NEW 125mm SANITARY SERVICE FROM NEW 200mm DIA. SANITARY SEWER TO PROPERTY LINE AND CONNECT TO EXISTING SANITARY SERVICE FOR HSE. 121, 141, 151, 157, 120, 140, 146, AND 150 CLARKE ST.
  4. FOR TYPICAL ROAD SECTIONS, REFER TO DWG. NO. 3.
  5. SUPPLY AND PLANT NEW TREE FOR HSE. No. 101 SMITH ST. (2 TREES), 120, 146, 150, AND 151 CLARKE ST.

BM-5986-24-01 - 453.866  
 NAIL & WASHERS ON HP LOCATED ON THE NORTHWEST CORNER OF SMITH ST. & CLARKE ST.

BM-5986-24-02 - 456.625  
 NAIL & WASHERS ON HP IN FRONT OF HOUSE 121 ON THE WEST SIDE OF CLARKE ST.



STM	BM 450.75 N 451.0	9.0m-375mm# STORM SEWER @ 3.8%	64.3m-375mm# STORM SEWER @ 5.1%	75.0m-375mm# STORM SEWER @ 1.7%	STM							
SAN	N 450.330	89.6m-200mm# SANITARY SEWER @ 4.22%			97.0m-200mm# SANITARY SEWER @ 1.47%	SAN						
C	452.59	452.56	453.64	454.89	455.11	455.90	456.54	456.59	457.06	457.53	457.85	C
STA	0+000	0+007.49	0+020	0+036.23	0+040	0+060	0+076.50	0+080	0+100	0+120	0+140	STA

DISCLAIMERS:

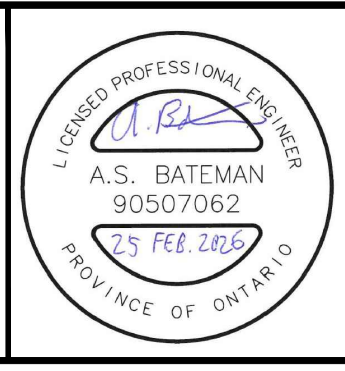
ALL EXISTING ELEVATIONS & DIMENSIONS TO BE CONFIRMED ON SITE. LOCATION OF UTILITIES IS APPROXIMATE ONLY AND SHOULD BE DETERMINED BY CONSULTING THE MUNICIPAL AUTHORITIES AND UTILITY COMPANIES CONCERNED. THE CONTRACTOR SHALL PROVE THE LOCATION OF UTILITIES AND SHALL BE RESPONSIBLE FOR ADEQUATE PROTECTION AGAINST DAMAGE.

TRITON ENGINEERING SERVICES LIMITED HAS MADE EVERY EFFORT TO ENSURE THE ACCURACY AND RELIABILITY OF THE INFORMATION PROVIDED, BUT ASSUMES NO RESPONSIBILITY FOR ANY CONSTRUCTION METHODS, TECHNIQUES, SEQUENCES, SAFETY MEASURES, OR CONTRACTOR PERFORMANCE RELATED TO THE IMPLEMENTATION OF THIS DESIGN. ANY DISCREPANCIES, CONFLICTS, OR REQUIRED CLARIFICATIONS MUST BE PROMPTLY REPORTED TO THE STAMPING ENGINEER/CONTRACT ADMINISTRATOR FOR RESOLUTION PRIOR TO PROCEEDING WITH CONSTRUCTION.

THIS DOCUMENT IS THE PROPERTY OF TRITON ENGINEERING SERVICES LIMITED AND SHALL NOT BE REPRODUCED IN WHOLE OR PART FOR ANY OTHER PROJECT WITHOUT WRITTEN AUTHORIZATION.

THIS DOCUMENT SHALL NOT BE USED FOR CONSTRUCTION UNLESS SIGNED AND SEALED FOR CONSTRUCTION.

No	DATE	REVISION	INITIAL
2	FEB. 2026	ISSUED FOR TENDER	L.M.S.
1	FEB. 2024	ISSUED FOR DESIGN REVIEW	L.M.S.



RECONSTRUCTION OF  
 CLARKE STREET  
 (ARTHUR)

TOWNSHIP OF WELLINGTON NORTH  
 7490 SIDEROAD 7 WEST  
 KENILWORTH, ONTARIO N0G 2E0

PLAN AND PROFILE  
 STA. 0+000 to STA. 0+140

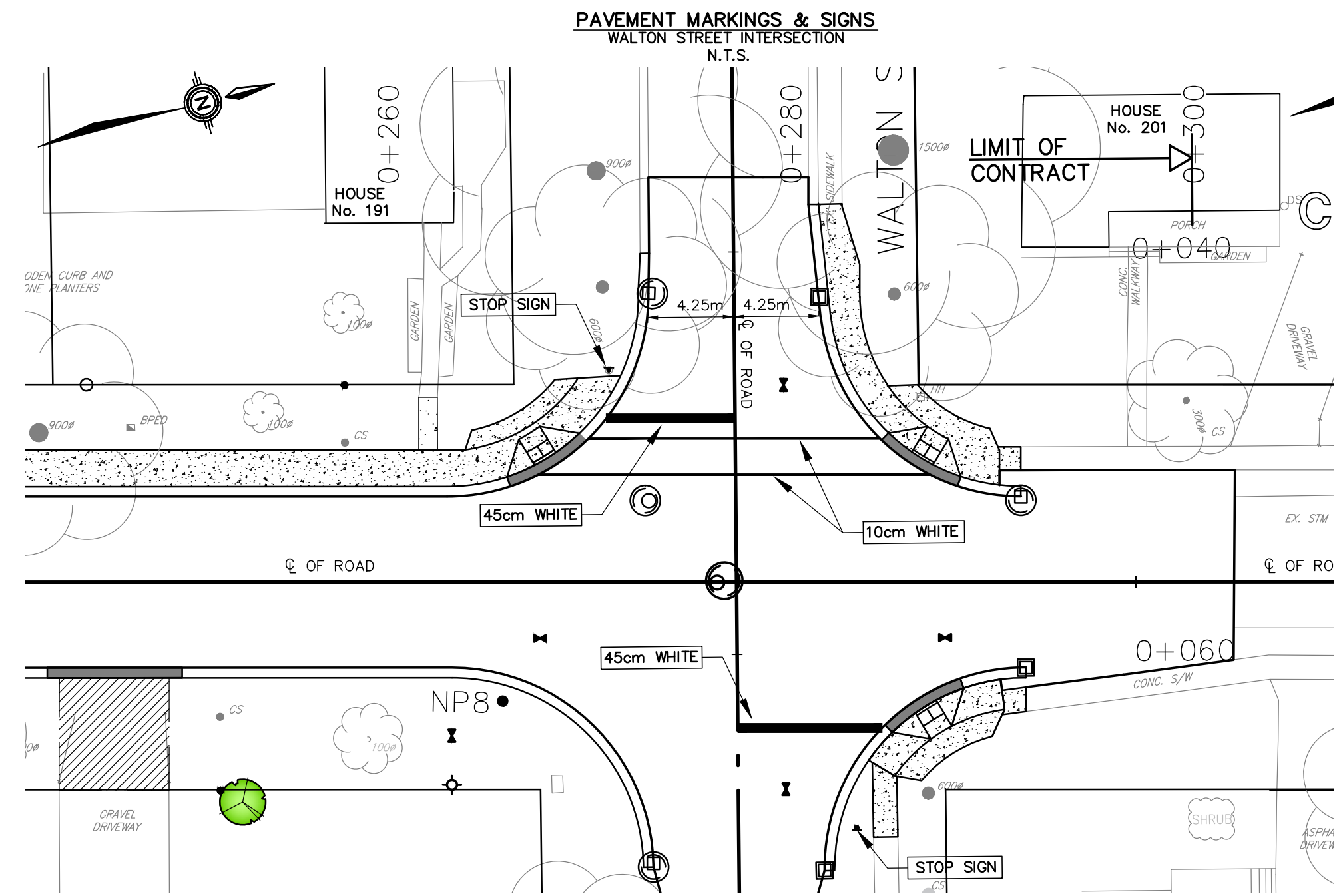
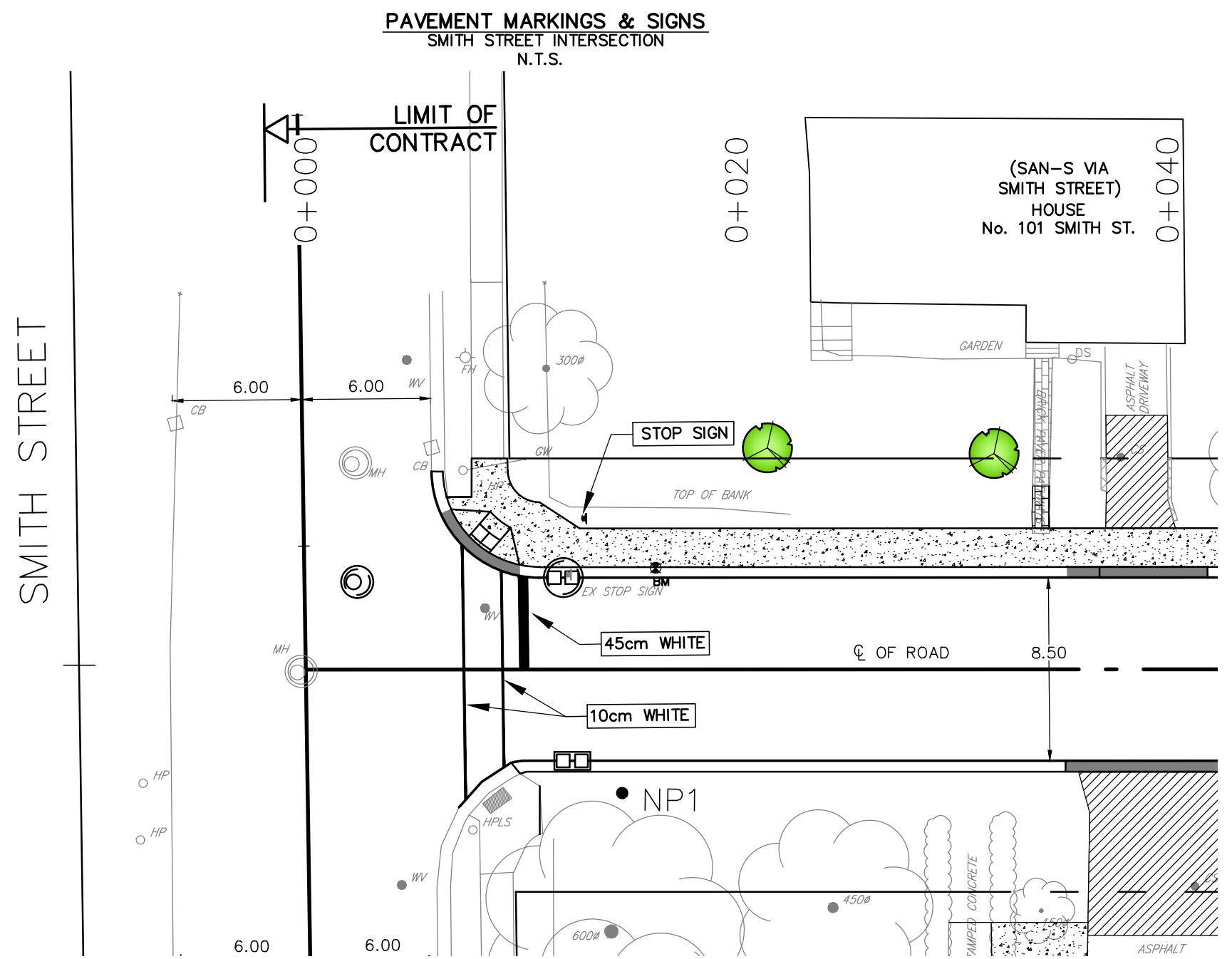
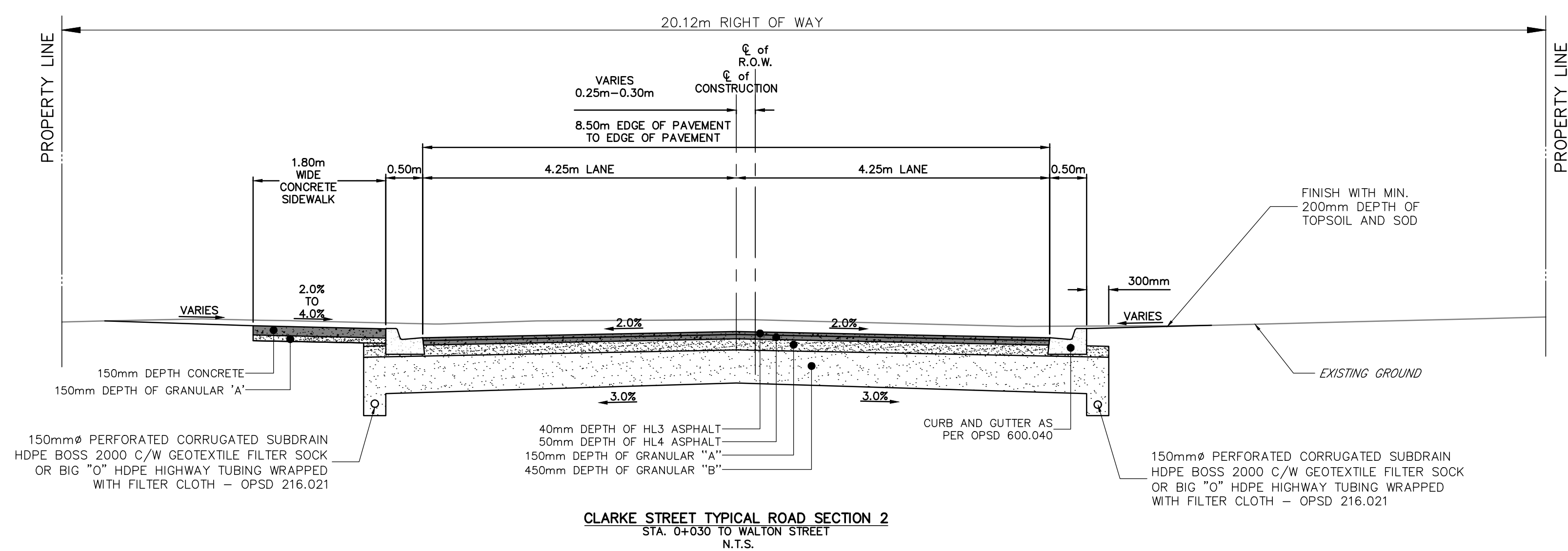
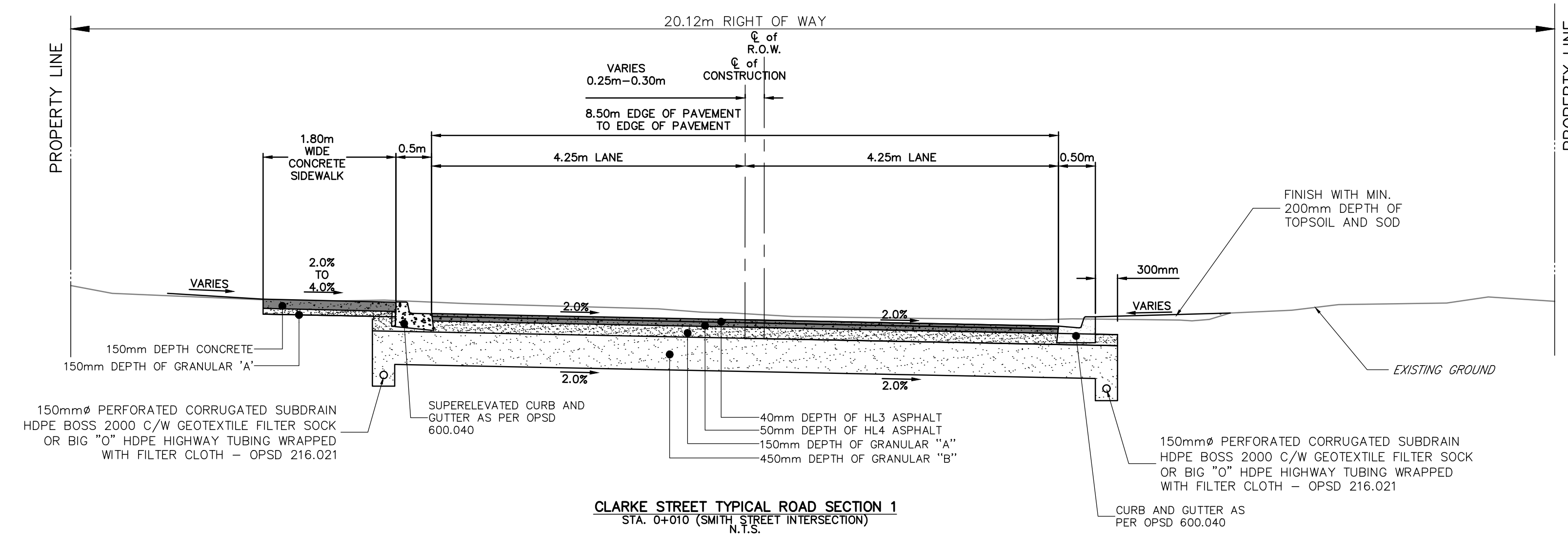
CONTRACT REF 2026-003  
 PROJECT No. M5986  
 DRAWN BY: J.P.Z.  
 CHECKED BY: L.M.S.  
 APPROVED BY: P.F.Z.  
 DATE: FEBRUARY 2024



SCALE:  
 H: 1:250 H: 1:500  
 V: 1:50 V: 1:100  
 (245.87) (115117)  
 UNLESS OTHERWISE SHOWN

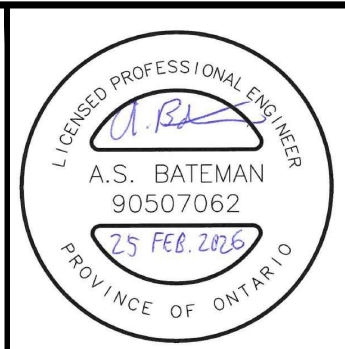
DRAWING NUMBER **01**





**DISCLAIMERS:**  
 1. ALL EXISTING ELEVATIONS & DIMENSIONS TO BE CONFIRMED ON SITE. THE LOCATION OF UTILITIES IS APPROXIMATE ONLY AND SHOULD BE DETERMINED BY CONSULTING THE MUNICIPAL AUTHORITIES AND UTILITY COMPANIES CONCERNED. THE CONTRACTOR SHALL PROVE THE LOCATION OF UTILITIES AND SHALL BE RESPONSIBLE FOR ADEQUATE PROTECTION AGAINST DAMAGE.

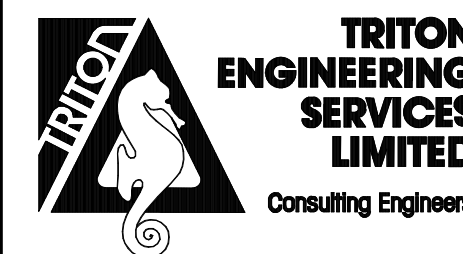
No	DATE	REVISION	INITIAL
2	FEB. 2026	ISSUED FOR TENDER	L.M.S.
1	FEB. 2024	ISSUED FOR DESIGN REVIEW	L.M.S.



RECONSTRUCTION OF  
 CLARKE STREET  
 (ARTHUR)

TOWNSHIP OF WELLINGTON NORTH  
 7490 SIDEROAD 7 WEST  
 KENILWORTH, ONTARIO N0G 2E0  
 TYPICAL ROAD SECTIONS  
 PAVEMENT MARKINGS & SIGNS

CONTRACT No.	5986-XX
PROJECT No.	M5986
DRAWN BY:	J.P.Z.
CHECKED BY:	L.M.S.
APPROVED BY:	P.F.Z.
DATE:	FEB 2024



SCALE:  
 N.T.S.  
 UNLESS OTHERWISE SHOWN

DRAWING NUMBER  
**03**