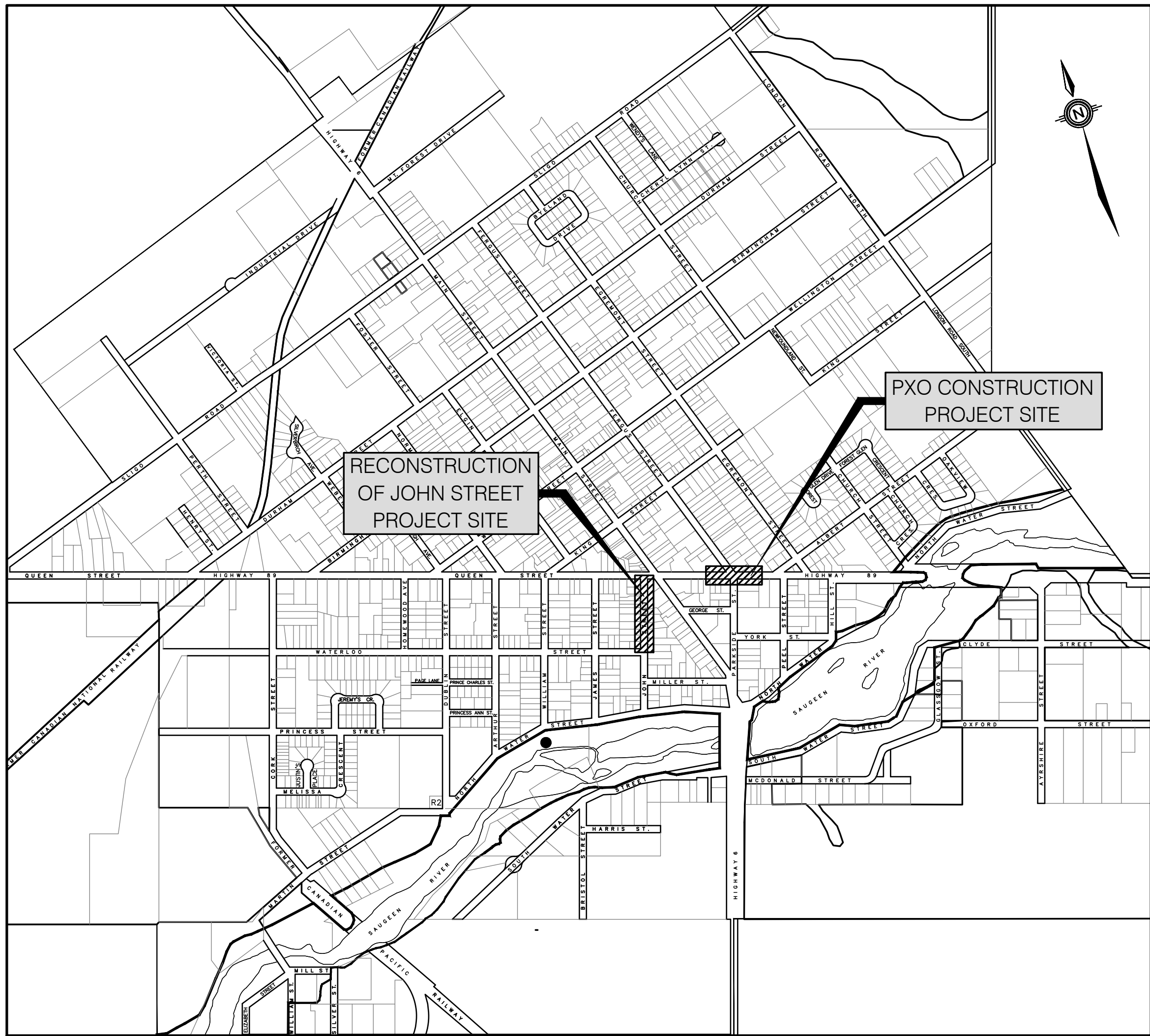


TOWNSHIP OF WELLINGTON NORTH

CONTRACT FOR RECONSTRUCTION OF **JOHN STREET** PXO CONSTRUCTION **QUEEN STREET EAST** MOUNT FOREST

CONTRACT No. RFT-2025-003



MOUNT FOREST
KEY PLAN

LIST OF DRAWINGS

00 — COVERSHEET

RECONSTRUCTION OF JOHN STREET (MOUNT FOREST)

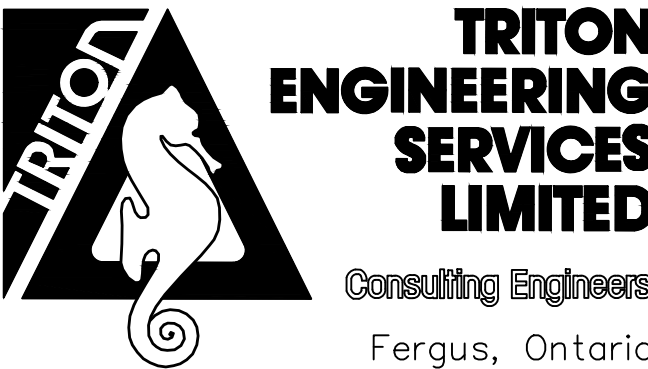
- 01 — REMOVALS PLAN
- 02 — PLAN AND PROFILE, QUEEN STREET W. TO STA. 0+120
- 03 — PLAN AND PROFILE, STA. 0+120 TO WATERLOO ST.
- 04 — TYPICAL SECTIONS

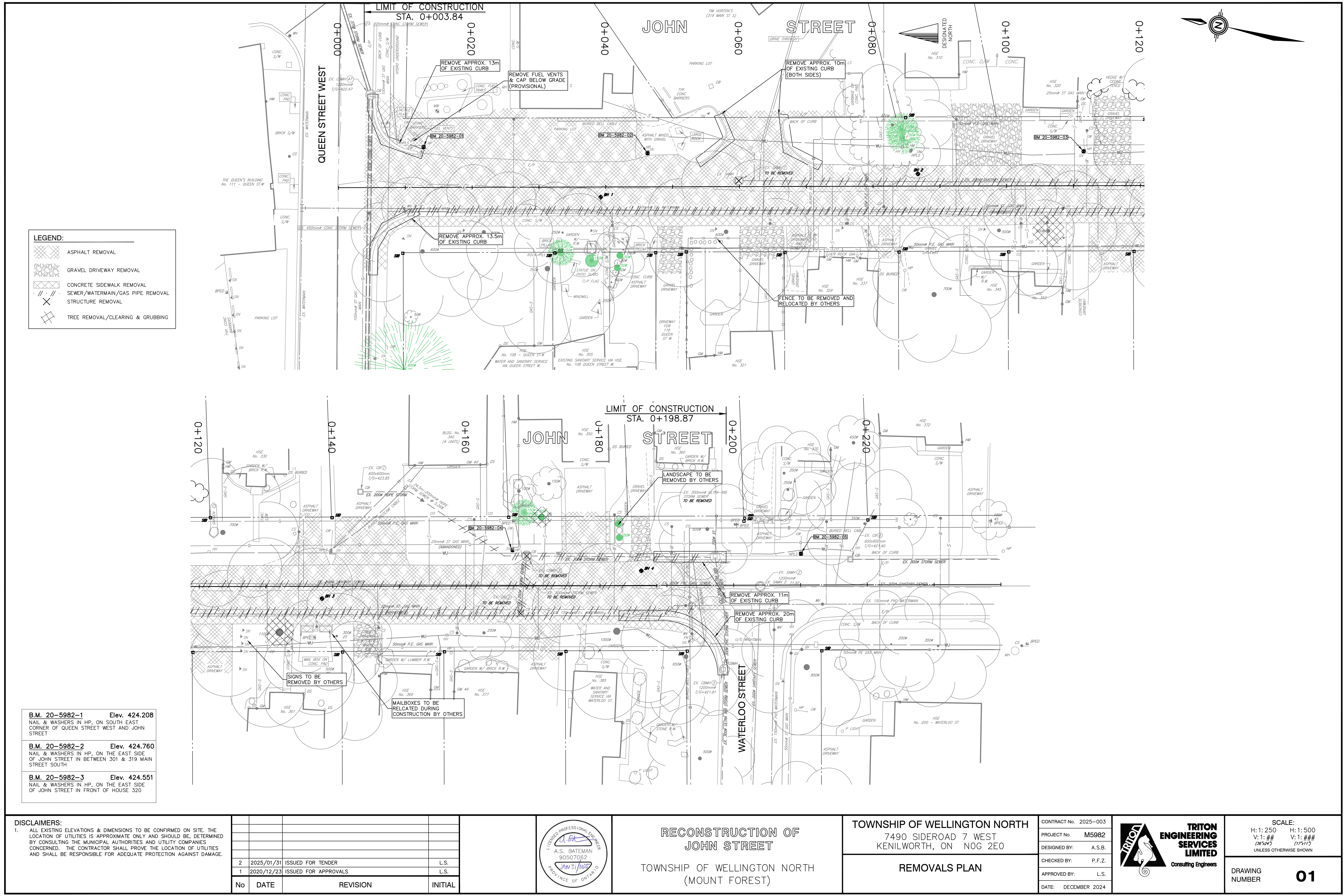
PXO CONSTRUCTION, QUEEN STREET EAST (MOUNT FOREST)

- 01 — PLAN

ISSUED FOR APPROVALS
ISSUED FOR PUBLIC INFORMATION
ISSUED FOR TENDER
ISSUED FOR CONSTRUCTION
AS RECORDED

— DECEMBER 2020
— OCTOBER 2023
— JANUARY 2025
—
—





LEGEND:

- 150mm GRAN."A",
150mm GRAN."B"
- 50mm HL3C, 150mm GRAN."A",
150mm GRAN."B" (COMMERCIAL)
- 70mm HL3C, 150mm GRAN."A",
150mm GRAN."B" (COMMERCIAL)
- CONCRETE SIDEWALK
- TACTILE PLATE AS PER OPSD 310.039
- DROP CURB
- CURB TRANSITION
- PROPOSED WATER SERVICE
- PROPOSED SANITARY SERVICE
- PROPOSED STORM SERVICE
- WV WATER VALVE
- TREE REMOVAL

NOTES:

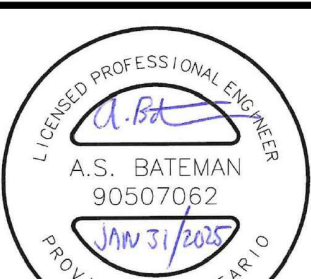
1. INSTALL NEW 25 MM DIAMETER WATER SERVICE FROM NEW 150 MM DIAMETER WATERMAIN TO PROPERTY LINE AND CONNECT TO EXISTING WATER SERVICE FOR 301 MAIN ST S AND HOUSE NO. 305, 310, 320, 321, 329, 337, AND 345.
2. INSTALL NEW 50 MM DIAMETER WATER SERVICE FROM NEW 150 MM DIAMETER WATERMAIN TO PROPERTY LINE AND CONNECT TO EXISTING WATER SERVICE FOR TIM HORTONS (319 MAIN ST S) AND HOUSE NO. 353.
3. INSTALL NEW 125 MM DIAMETER SANITARY SERVICE FROM NEW 200 MM DIAMETER SANITARY SEWER TO PROPERTY LINE AND CONNECT TO EXISTING SANITARY SERVICE FOR HOUSE NO. 310, 320, 321, 329, 337 AND 345.
4. INSTALL NEW 125mm DIAMETER SANITARY SERVICE AND MARKER FROM NEW 200mm DIAMETER SANITARY SEWER TO PROPERTY LINE FOR HOUSE No. 305 JOHN ST.
5. INVESTIGATE EXISTING SANITARY SERVICES FOR TIM HORTON'S (319 MAIN ST S) AT THE TIME OF CONSTRUCTION TO DETERMINE IF OPERATIONAL. IF MULTIPLE SERVICES ARE OPERATIONAL, INSTALL NEW 125 MM DIAMETER SANITARY SERVICES FROM NEW 200 MM DIAMETER SANITARY SEWER TO PROPERTY LINE AND CONNECT TO EXISTING SANITARY SERVICES. IF ONLY ONE SANITARY SERVICE IS OPERATIONAL, OR IF IT IS FEASIBLE TO RECONNECT THE EXISTING SANITARY SERVICES TO A NEW SINGULAR SERVICE, THEN INSTALL NEW 150 MM DIAMETER SANITARY SERVICE FROM NEW 200 MM DIAMETER SANITARY SEWER TO PROPERTY LINE AND CONNECT TO EXISTING SANITARY SERVICE(S).
6. INVESTIGATE EXISTING SANITARY SERVICES FOR HOUSE NO. 353 AT THE TIME OF CONSTRUCTION TO DETERMINE THE FEASIBILITY OF RECONNECTING THE EXISTING SERVICES TO A NEW SINGULAR 150 MM DIAMETER SANITARY SERVICE FROM NEW 200 MM DIAMETER SANITARY SEWER TO PROPERTY LINE. IF NOT FEASIBLE, THEN INSTALL NEW 150 MM DIAMETER SANITARY SERVICES FROM NEW 200 MM DIAMETER SANITARY SEWER TO PROPERTY LINE AND CONNECT TO EXISTING SANITARY SERVICES.
7. INSTALL NEW 100 MM DIAMETER STORM SERVICE AND MARKER FROM NEW 300 MM DIAMETER STORM SEWER TO PROPERTY LINE FOR BUILDING NO. 301 MAIN ST S, HOUSE NO 305, 310, 320, 321, 329, 337, AND 345. LOCATIONS TO BE DETERMINED AT THE TIME OF CONSTRUCTION.
8. INSTALL NEW 250 MM DIAMETER STORM SERVICE AND MARKER FROM NEW 300 MM DIAMETER STORM SEWER TO PROPERTY LINE FOR BUILDING NO. 353. LOCATION TO BE DETERMINED AT THE TIME OF CONSTRUCTION.
9. SANITARY SERVICES TO BE INSTALLED WITH A MINIMUM OF 2.4 M OF COVER AT PROPERTY LINE (WHERE MAINLINE SEWER ELEVATION ALLOWS), UNLESS NOTED OTHERWISE. CONTRACTOR TO USE VERTICAL SWEEPS AND FITTINGS, AS REQUIRED, TO CONNECT TO EXISTING SERVICES AT PROPERTY LINE.
10. SEPARATION DISTANCES BETWEEN SEWERS AND WATERMAINS AND SEWER SERVICES AND WATER SERVICES SHALL BE AS PER MECOP PROCEDURE F-6-1. IN GENERAL, 2.5 M HORIZONTAL SEPARATION BETWEEN PARALLEL INSTALLATIONS AND 0.5 M VERTICAL SEPARATION AT CROSSINGS WHERE THE WATERMAIN OR WATER SERVICE CROSSES UNDER THE SEWER. WHERE THIS SPATIAL SEPARATION CANNOT BE ACHIEVED, OTHER MEASURES ARE TO BE IMPLEMENTED, SUCH AS USE OF PRESSURE PIPE (350 KPA) FOR SEWERS, AS TO BE APPROVED BY THE CONTRACT ADMINISTRATOR.
11. FOR TYPICAL ROAD SECTIONS, REFER TO DWG. NO. 04.
12. CONCRETE SIDEWALK ADJACENT TO THE CURB IS TO BE 150 MM THICK.

B.M. 20-5982-1	Elev. 424.208
NAIL & WASHERS IN HP, ON SOUTH EAST CORNER OF QUEEN STREET WEST AND JOHN STREET	
B.M. 20-5982-2	Elev. 424.760
NAIL & WASHERS IN HP, ON THE EAST SIDE OF JOHN STREET IN BETWEEN 301 & 319 MAIN STREET SOUTH	
B.M. 20-5982-3	Elev. 424.551
NAIL & WASHERS IN HP, ON THE EAST SIDE OF JOHN STREET IN FRONT OF HOUSE 320	

DISCLAIMERS:

1. ALL EXISTING ELEVATIONS & DIMENSIONS TO BE CONFIRMED ON SITE. THE LOCATION OF UTILITIES IS APPROXIMATE ONLY AND SHOULD BE DETERMINED BY CONSULTING THE MUNICIPAL AUTHORITIES AND UTILITY COMPANIES CONCERNED. THE CONTRACTOR SHALL PROVE THE LOCATION OF UTILITIES AND SHALL BE RESPONSIBLE FOR ADEQUATE PROTECTION AGAINST DAMAGE.

3	2025/01/31	ISSUED FOR TENDER	L.S.	
2	2023/10/23	ISSUED FOR PUBLIC INFORMATION	L.S.	
1	2020/12/23	ISSUED FOR APPROVALS	L.S.	
No	DATE	REVISION	INITIAL	



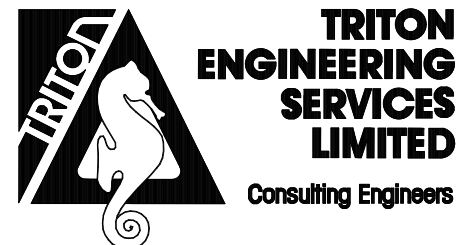
**RECONSTRUCTION OF
JOHN STREET**

TOWNSHIP OF WELLINGTON NORTH
(MOUNT FOREST)

TOWNSHIP OF WELLINGTON NORTH
7490 SIDEROAD 7 WEST
KENILWORTH, ON NOG 2E0

**PLAN AND PROFILE
FROM QUEEN ST W TO STA. 0+120**

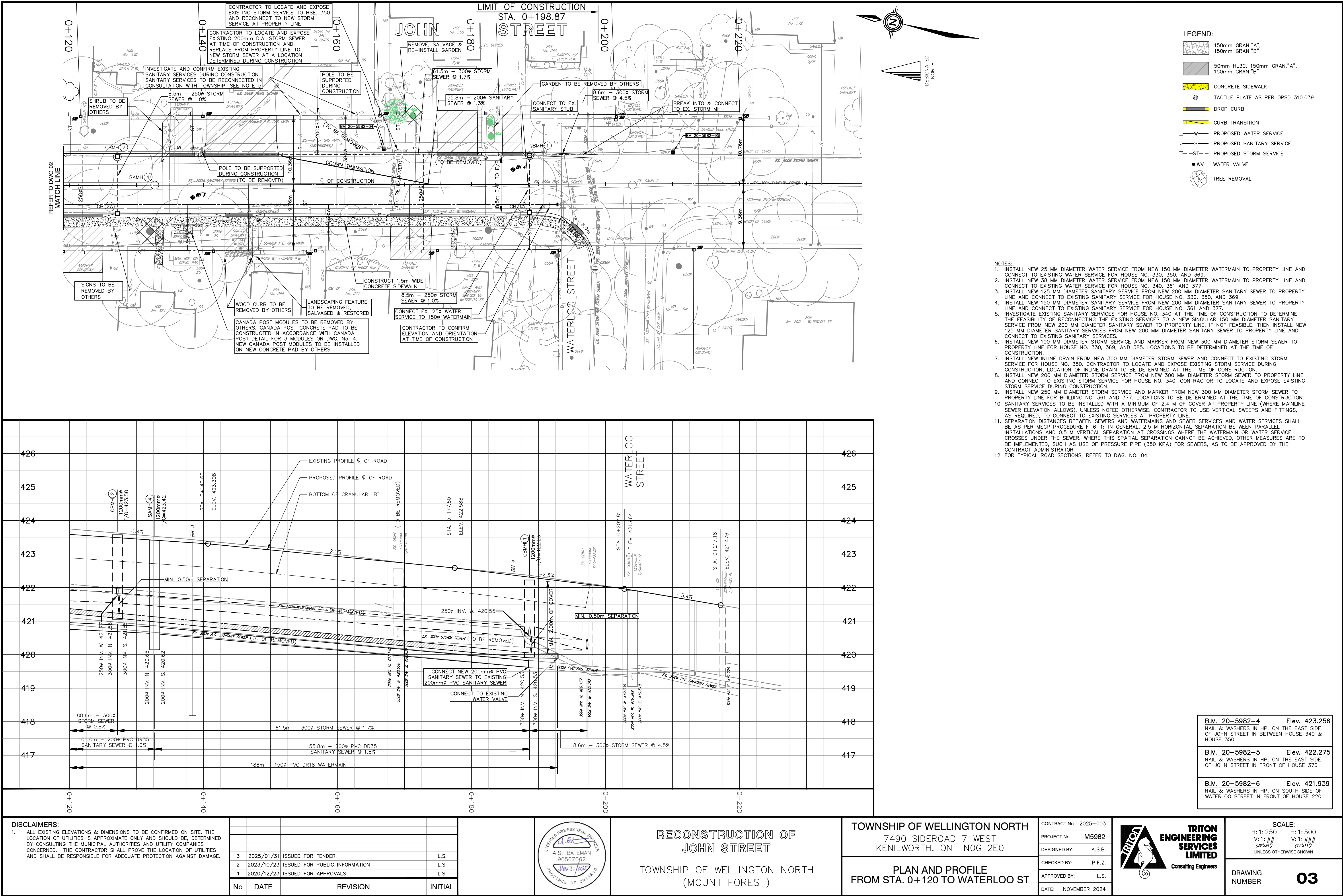
CONTRACT No.	2025-003
PROJECT No.	M5982
DESIGNED BY:	A.S.B.
CHECKED BY:	P.F.Z.
APPROVED BY:	L.S.
DATE:	NOVEMBER 2024

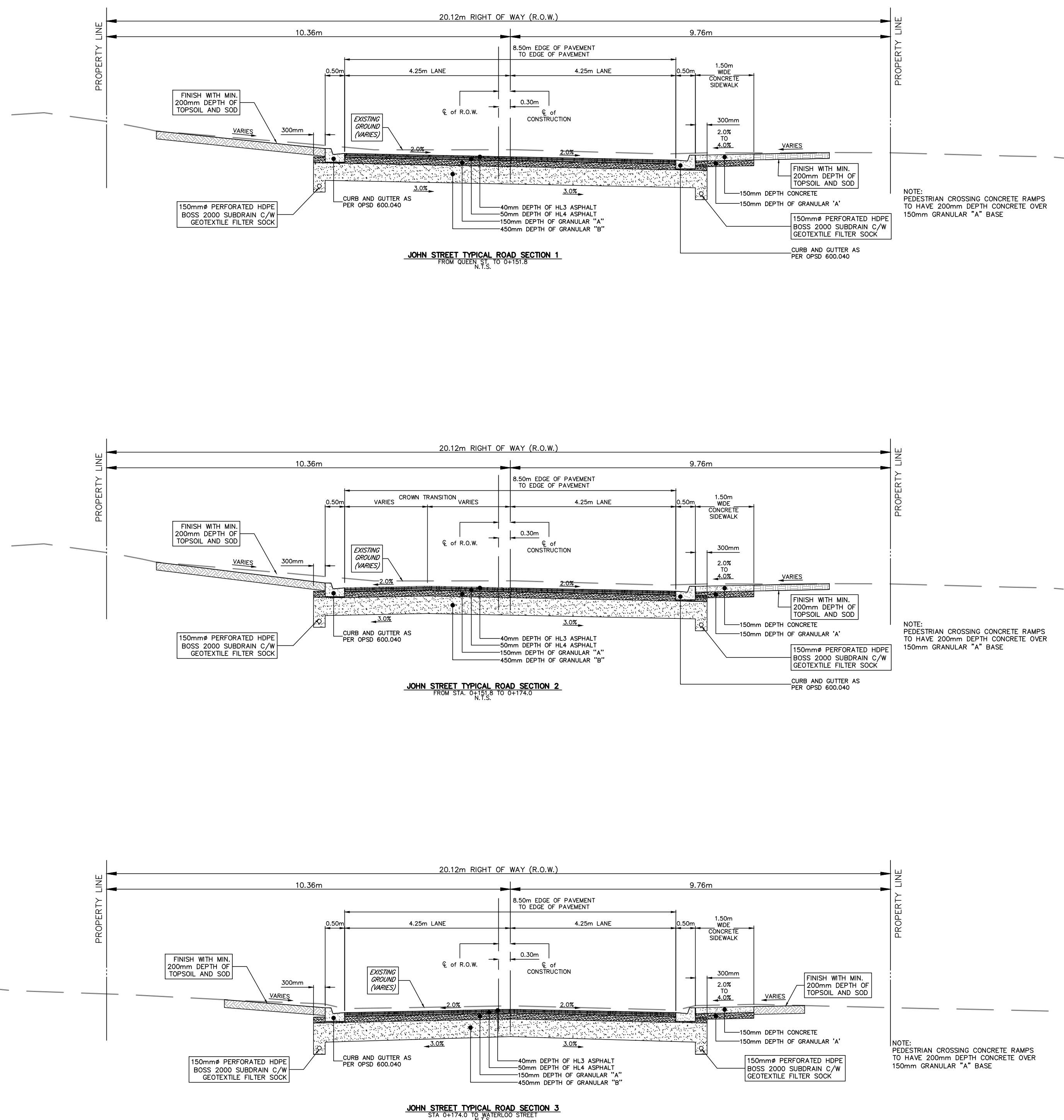


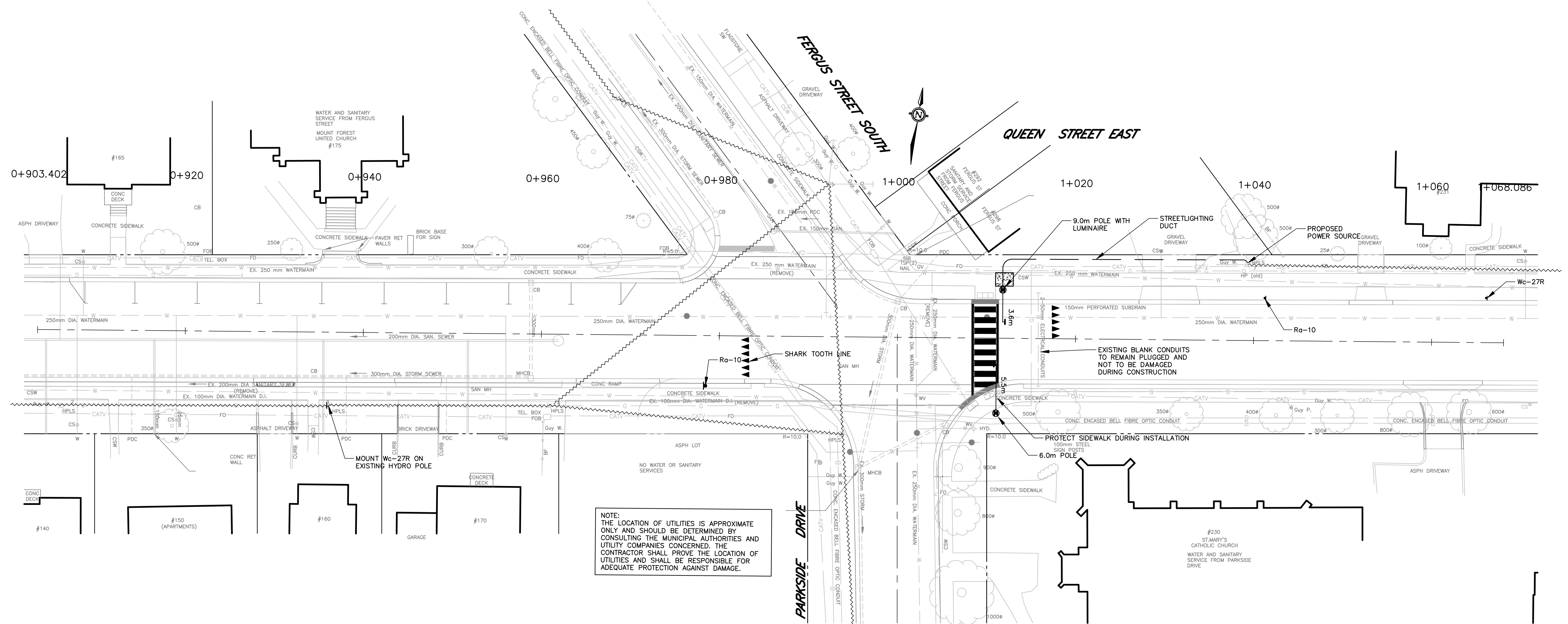
SCALE:
H:1:250 H:1:500
V:1:## V:1:##
(063247) (175117)
UNLESS OTHERWISE SHOWN

DRAWING
NUMBER

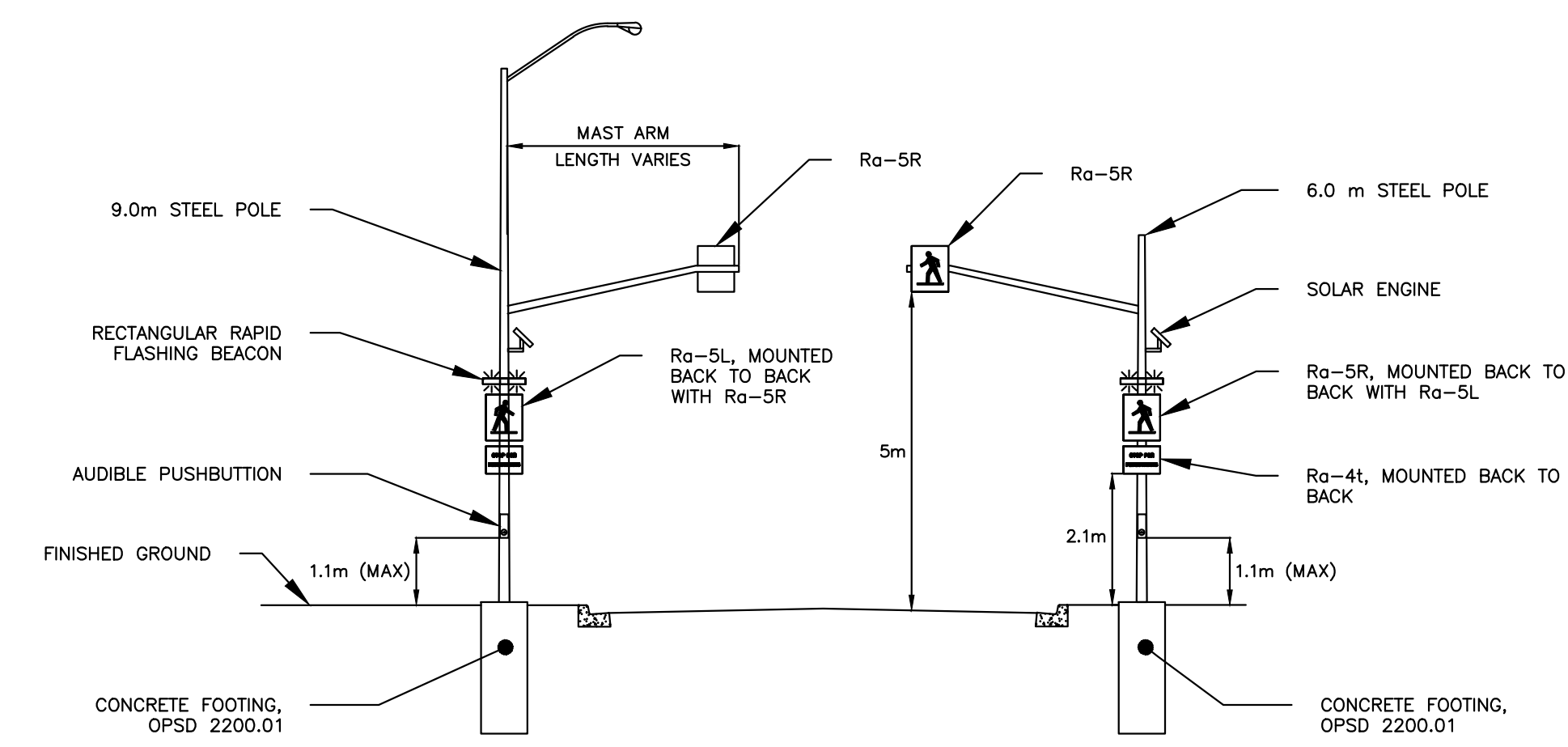
02







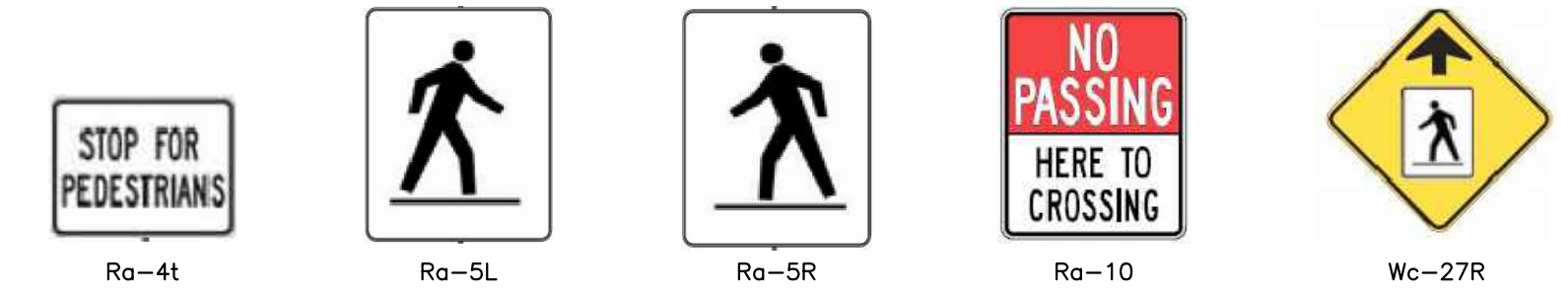
NOTE:
THE LOCATION OF UTILITIES IS APPROXIMATE
ONLY AND SHOULD BE DETERMINED BY
CONSULTING THE MUNICIPAL AUTHORITIES AND
UTILITY COMPANIES CONCERNED. THE
CONTRACTOR SHALL PROVE THE LOCATION OF
UTILITIES AND SHALL BE RESPONSIBLE FOR
ADEQUATE PROTECTION AGAINST DAMAGE.





POLE INSTALLATION
TYPE B
N.T.S.

- LEGEND**
- DROP CURB
 - TACTILE WARNING PLATES
 - CONCRETE SIDEWALK
 - EXISTING OVERHEAD HYDRO
 - 75mm DIA. PVC DUCT (CSA C22.2 No. 211.2)
 - SIGN ASSEMBLY

- NOTE**
- EXISTING CROSSWALK PAVEMENT MARKINGS SHALL BE OBLITERATED. EXISTING CENTRELINE PAVEMENT MARKING SHALL BE OBLITERATED BETWEEN YIELD LINES
 - NEW PAVEMENT MARKINGS ARE TO BE DURABLE
 - EXISTING "SCHOOL CROSSING" AND "SCHOOL CROSSING AHEAD" SIGNS TO BE REMOVED



NOTES						PXO CONSTRUCTION QUEEN STREET EAST INTERSECTION WITH PARKSIDE DRIVE MOUNT FOREST, ON	TOWNSHIP OF WELLINGTON NORTH 7490 SIDEROAD 7 WEST P.O BOX 125 KENILWORTH ONTARIO	PROJECT No RFT 2025-003	 TRITON ENGINEERING SERVICES LIMITED Consulting Engineers	SCALES 1:250 HORIZONTAL N/A VERTICAL	
								DRAWN BY: M.H.			
								CHECKED BY: T.J.K.			
								APPROVED BY: T.J.K.			
	02 JAN. 2025		ISSUED FOR TENDER	T.J.K.							
01 NOV. 2023		ISSUED FOR MTO REVIEW	T.J.K.								
	No	DATE	REVISION	INITIAL			PLAN			DRAWING NUMBER	01