

LEGEND:

- 150mm GRAN."A",
150mm GRAN."B"
- 50mm HL3C, 150mm GRAN."A",
150mm GRAN."B"
- 70mm HL3C, 150mm GRAN."A",
150mm GRAN."B" (COMMERCIAL)
- CONCRETE SIDEWALK
- TACTILE PLATE AS PER OPSD 310.039
- DROP CURB
- CURB TRANSITION
- S-SANITARY SERVICE
- W-WATER SERVICE
- WV-WATER VALVE
- TREE REMOVAL

NOTES:

1. INSTALL NEW 19 MM DIAMETER WATER SERVICE FROM NEW 150 MM DIAMETER WATERMAIN TO PROPERTY LINE AND CONNECT TO EXISTING WATER SERVICE FOR 301 MAIN ST S AND HOUSE NO. 305, 310, 320, 321, 329, 337 AND 345
2. INSTALL NEW 25 MM DIAMETER WATER SERVICE FROM NEW 150 MM DIAMETER WATERMAIN TO PROPERTY LINE AND CONNECT TO EXISTING WATER SERVICE FOR TIM HORTONS (319 MAIN ST S)
3. INSTALL NEW 38 MM DIAMETER WATER SERVICE FROM NEW 150 MM DIAMETER WATERMAIN TO PROPERTY LINE AND CONNECT TO EXISTING WATER SERVICE FOR HOUSE NO. 353
4. INSTALL NEW 125 MM DIAMETER SANITARY SERVICE FROM NEW 200 MM DIAMETER SANITARY SEWER TO PROPERTY LINE AND CONNECT TO EXISTING SANITARY SERVICE FOR HOUSE NO. 310, 320, 321, 329, 337 AND 345
5. INSTALL NEW 125mm DIAMETER SANITARY SERVICE AND MARKER FROM NEW 200mm DIAMETER SANITARY SEWER TO PROPERTY LINE FOR HOUSE NO. 305 JOHN ST
6. INVESTIGATE EXISTING SANITARY SERVICES FOR TIM HORTONS (319 MAIN ST S) AT THE TIME OF CONSTRUCTION TO DETERMINE IF OPERATIONAL. IF MULTIPLE SERVICES ARE OPERATIONAL, INSTALL NEW 125 MM DIAMETER SANITARY SERVICES FROM NEW 200 MM DIAMETER SANITARY SEWER TO PROPERTY LINE AND CONNECT TO EXISTING SANITARY SERVICES. IF ONLY ONE SANITARY SERVICE IS OPERATIONAL, OR IF IT IS FEASIBLE TO RECONNECT THE EXISTING SANITARY SERVICES TO A NEW SINGULAR SERVICE, THEN INSTALL NEW 150 MM DIAMETER SANITARY SERVICE FROM NEW 200 MM DIAMETER SANITARY SEWER TO PROPERTY LINE AND CONNECT TO EXISTING SANITARY SERVICE(S).
7. INVESTIGATE EXISTING SANITARY SERVICES FOR HOUSE NO. 353 AT THE TIME OF CONSTRUCTION TO DETERMINE THE FEASIBILITY OF RECONNECTING THE EXISTING SERVICES TO A NEW SINGULAR 150 MM DIAMETER SANITARY SERVICE FROM NEW 200 MM DIAMETER SANITARY SEWER TO PROPERTY LINE. IF NOT FEASIBLE, THEN INSTALL NEW 150 MM DIAMETER SANITARY SERVICES FROM NEW 200 MM DIAMETER SANITARY SEWER TO PROPERTY LINE AND CONNECT TO EXISTING SANITARY SERVICES.
8. INSTALL NEW 100 MM DIAMETER STORM SERVICE AND MARKER FROM NEW 300 MM DIAMETER STORM SEWER TO PROPERTY LINE FOR BUILDING NO. 301 MAIN ST S, TIM HORTONS (319 MAIN S S), HOUSE NO 305, 310, 320, 321, 329, 337, 345 AND 353. LOCATIONS TO BE DETERMINED AT THE TIME OF CONSTRUCTION.
9. SANITARY SERVICES TO BE INSTALLED WITH A MINIMUM OF 2.4 M OF COVER AT PROPERTY LINE (WHERE MAINLINE SEWER ELEVATION ALLOWS), UNLESS NOTED OTHERWISE. CONTRACTOR TO USE VERTICAL SWEEPS AND FITTINGS, AS REQUIRED, TO CONNECT TO EXISTING SERVICES AT PROPERTY LINE.
10. SEPARATION DISTANCES BETWEEN SEWERS AND WATERMAINS AND SEWER SERVICES AND WATER SERVICES SHALL BE AS PER MECOP PROCEDURE F-6-1; IN GENERAL, 2.5 M HORIZONTAL SEPARATION BETWEEN PARALLEL INSTALLATIONS AND 0.5 M VERTICAL SEPARATION AT CROSSINGS WHERE THE WATERMAIN OR WATER SERVICE CROSSES UNDER THE SEWER. WHERE THIS SPATIAL SEPARATION CANNOT BE ACHIEVED, OTHER MEASURES ARE TO BE IMPLEMENTED, SUCH AS USE OF PRESSURE PIPE (350 KPA) FOR SEWERS, AS TO BE APPROVED BY THE CONTRACT ADMINISTRATOR.
11. FOR TYPICAL ROAD SECTIONS, REFER TO DWG. NO. 04.
12. REFER TO DWG NO. 05 FOR LINE PAINTING

DISCLAIMER:

THE INFORMATION PRESENTED ON THESE DRAWINGS IS PROVIDED FOR PUBLIC INFORMATION TO SOLICIT FEEDBACK ON THE MAJOR DESIGN ELEMENTS OF THE PROJECT CONCEPT AND SHOULD NOT BE RELIED UPON FOR CONSTRUCTION. TRITON ENGINEERING SERVICES LIMITED HAS MADE EVERY ATTEMPT TO ENSURE THE ACCURACY AND RELIABILITY OF THE INFORMATION PRESENTED; HOWEVER, DOES NOT ACCEPT ANY RESPONSIBILITY FOR THE ACCURACY, COMPLETENESS, LEGALITY OF THE INFORMATION AND DISCLAIMS ANY LIABILITY IN CONNECTION WITH THE USE OF THIS INFORMATION.

B.M. 20-5982-1 Elev. 424.208

NAIL & WASHERS IN HP, ON SOUTH EAST CORNER OF QUEEN STREET WEST AND JOHN STREET

B.M. 20-5982-2 Elev. 424.760

NAIL & WASHERS IN HP, ON THE EAST SIDE OF JOHN STREET IN BETWEEN 301 & 319 MAIN STREET SOUTH

B.M. 20-5982-3 Elev. 424.551

NAIL & WASHERS IN HP, ON THE EAST SIDE OF JOHN STREET IN FRONT OF HOUSE 320

DISCLAIMERS:

1. ALL EXISTING ELEVATIONS & DIMENSIONS TO BE CONFIRMED ON SITE. THE LOCATION OF UTILITIES IS APPROXIMATE ONLY AND SHOULD BE DETERMINED BY CONSULTING THE MUNICIPAL AUTHORITIES AND UTILITY COMPANIES CONCERNED. THE CONTRACTOR SHALL PROVE THE LOCATION OF UTILITIES AND SHALL BE RESPONSIBLE FOR ADEQUATE PROTECTION AGAINST DAMAGE.

No	DATE	REVISION	INITIAL
2	2023/10/23	ISSUED FOR PUBLIC INFORMATION	L.S.
1	2020/12/23	ISSUED FOR APPROVALS	L.S.

PRELIMINARY

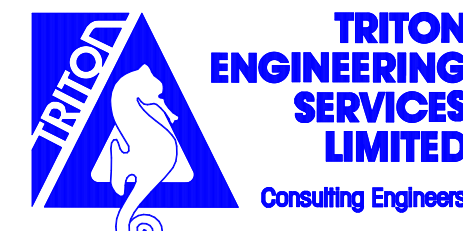
RECONSTRUCTION OF
JOHN STREET

TOWNSHIP OF WELLINGTON NORTH
(MOUNT FOREST)

TOWNSHIP OF WELLINGTON NORTH
7490 SIDEROAD 7 WEST
KENILWORTH, ON NOG 2E0

PLAN AND PROFILE
FROM QUEEN ST W TO STA. 0+120

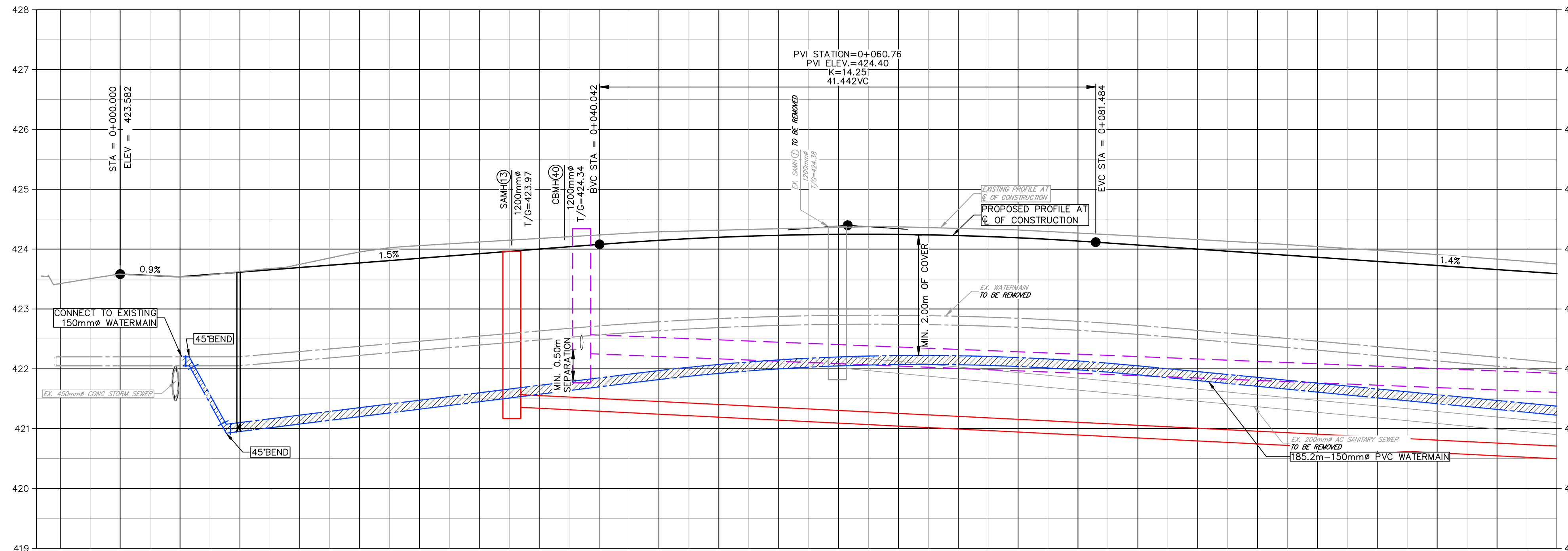
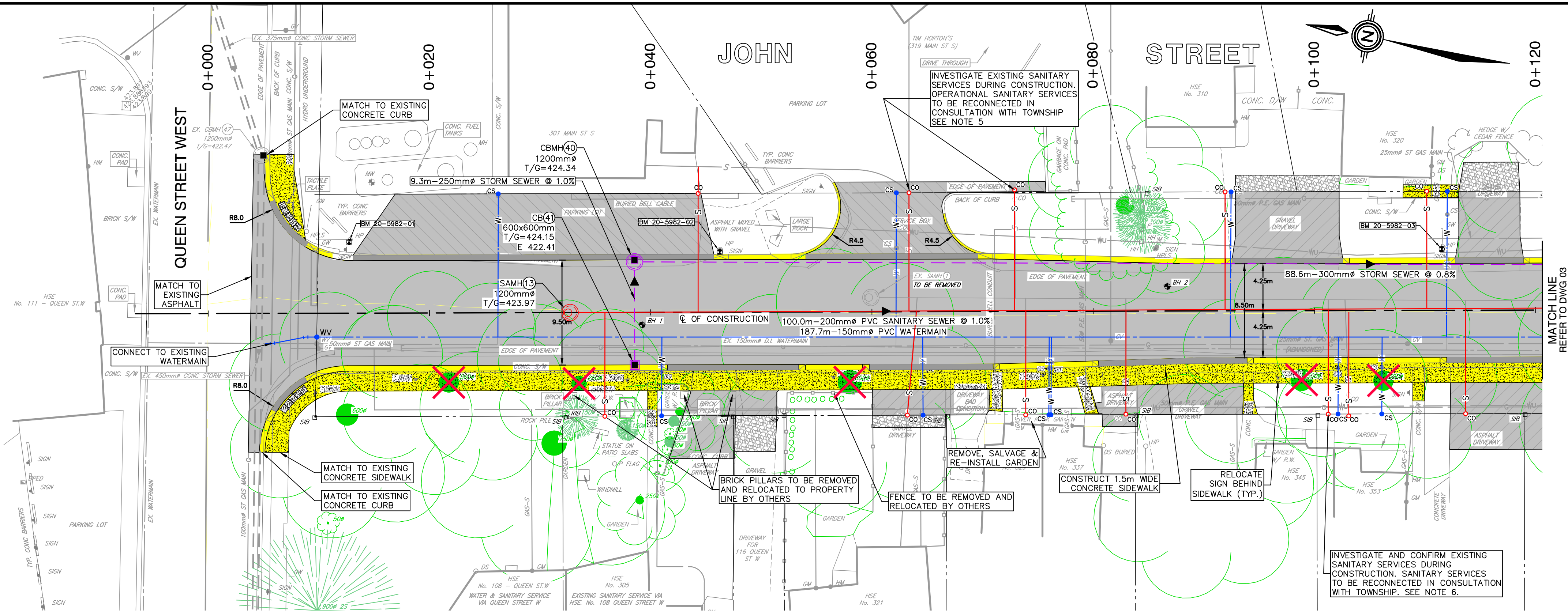
CONTRACT No.	5982-21
PROJECT No.	M5982
DESIGNED BY:	C.J.D.W.
CHECKED BY:	P.F.Z.
APPROVED BY:	L.S.
DATE:	OCTOBER 2020



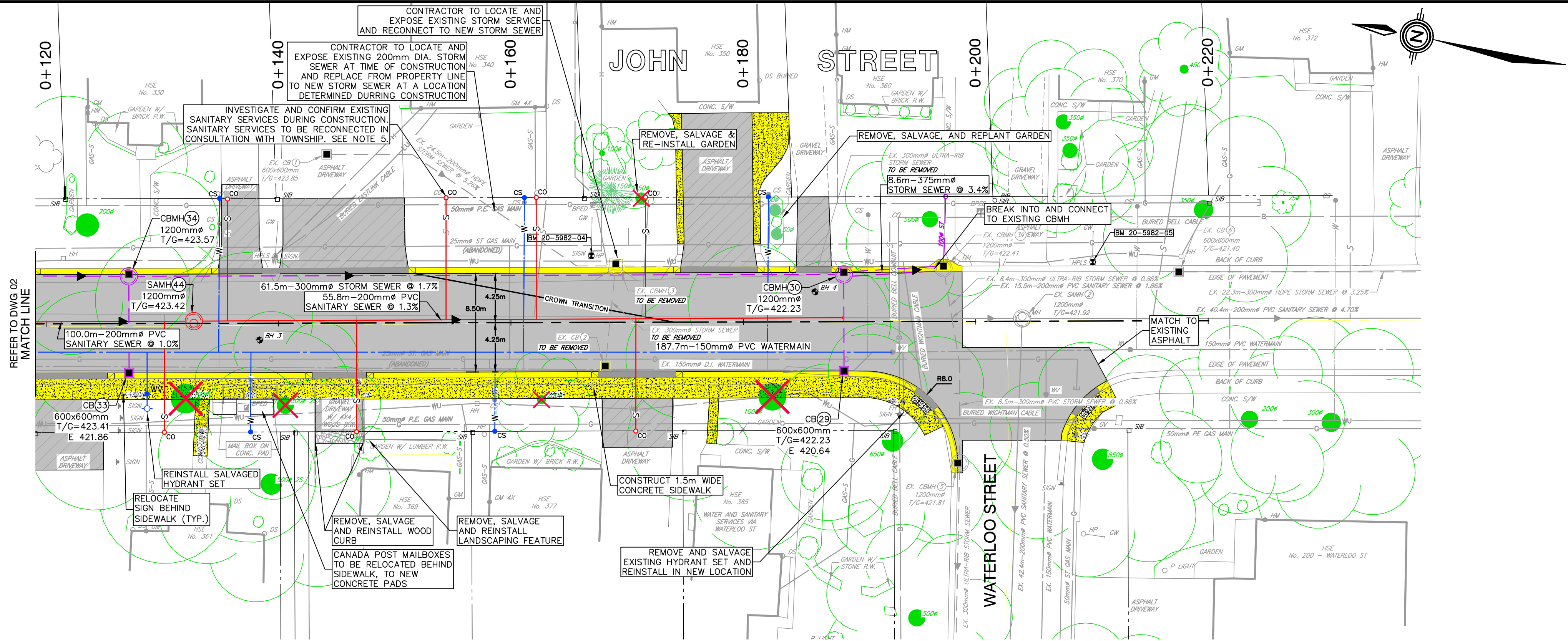
SCALE:
H:1:250
V:1:50
(06247)
UNLESS OTHERWISE SHOWN

DRAWING
NUMBER

02



Storm	88.6m-300mm \varnothing STORM SEWER @ 0.8%															
Sanitary	100.0m-200mm \varnothing PVC SANITARY SEWER @ 1.0%															
ϕ of Road Elevation	423.58	423.54	423.62	423.77	423.92	424.08	424.25	424.25	424.25	424.12	424.00	423.86	423.73	423.59		
Station	0+000	0+004.95	0+010	0+020	0+030	0+040.95	0+050	0+060	0+062.03	0+070	0+080	0+081.48	0+090	0+100	0+110	0+120

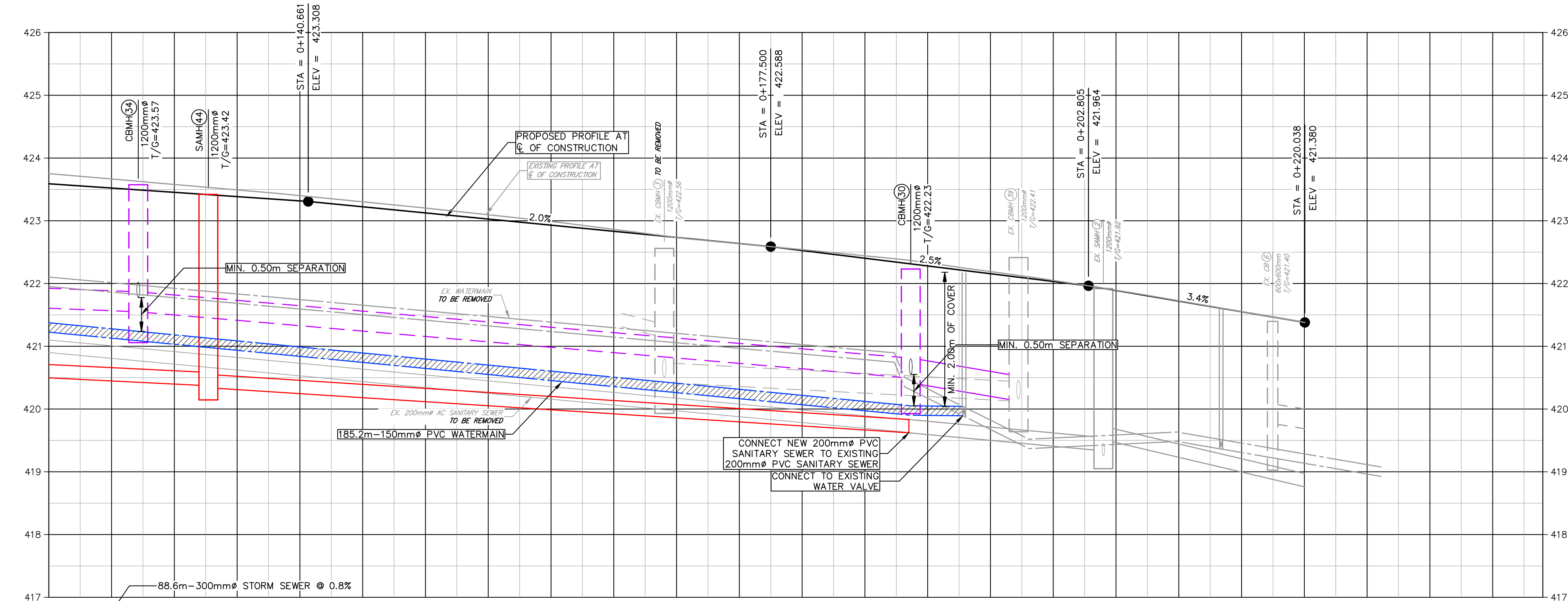


- LEGEND:
- 150mm GRAN."A", 150mm GRAN."B"
 - 50mm HL3C, 150mm GRAN."A", 150mm GRAN."B"
 - CONCRETE SIDEWALK
 - TACTILE PLATE AS PER OPSD 310.039
 - DROP CURB
 - CURB TRANSITION
 - SANITARY SERVICE
 - WATER SERVICE
 - WATER VALVE
 - TREE REMOVAL

- NOTES:
- INSTALL NEW 19 MM DIAMETER WATER SERVICE FROM NEW 150 MM DIAMETER WATERMAIN TO PROPERTY LINE AND CONNECT TO EXISTING WATER SERVICE FOR HOUSE NO. 330, 350, AND 369.
 - INSTALL NEW 38 MM DIAMETER WATER SERVICE FROM NEW 150 MM DIAMETER WATERMAIN TO PROPERTY LINE AND CONNECT TO EXISTING WATER SERVICE FOR HOUSE NO. 340, 361 AND 377.
 - INSTALL NEW 125 MM DIAMETER SANITARY SERVICE FROM NEW 200 MM DIAMETER SANITARY SEWER TO PROPERTY LINE AND CONNECT TO EXISTING SANITARY SERVICE FOR HOUSE NO. 330, 350, AND 369.
 - INSTALL NEW 150 MM DIAMETER SANITARY SERVICE FROM NEW 200 MM DIAMETER SANITARY SEWER TO PROPERTY LINE AND CONNECT TO EXISTING SANITARY SERVICE FOR HOUSE NO. 361 AND 377.
 - INVESTIGATE EXISTING SANITARY SERVICES FOR HOUSE NO. 340 AT THE TIME OF CONSTRUCTION TO DETERMINE THE FEASIBILITY OF RECONNECTING THE EXISTING SERVICES TO A NEW SINGULAR 150 MM DIAMETER SANITARY SERVICE FROM NEW 200 MM DIAMETER SANITARY SEWER TO PROPERTY LINE. IF NOT FEASIBLE, THEN INSTALL NEW 125 MM DIAMETER SANITARY SERVICES FROM NEW 200 MM DIAMETER SANITARY SEWER TO PROPERTY LINE AND CONNECT TO EXISTING SANITARY SERVICES.
 - INSTALL NEW 100 MM DIAMETER STORM SERVICE AND MARKER FROM NEW 300 MM DIAMETER STORM SEWER TO PROPERTY LINE FOR HOUSE NO. 330, 350, 361, 369 AND 377. LOCATIONS TO BE DETERMINED AT THE TIME OF CONSTRUCTION.
 - INSTALL NEW INLINE DRAIN FROM NEW 300 MM DIAMETER STORM SEWER AND CONNECT TO EXISTING STORM SERVICE FOR HOUSE NO. 350. CONTRACTOR TO LOCATE AND EXPOSE EXISTING STORM SERVICE DURING CONSTRUCTION. LOCATION OF INLINE DRAIN TO BE DETERMINED AT THE TIME OF CONSTRUCTION.
 - INSTALL NEW 200 MM DIAMETER STORM SERVICE FROM NEW 300 MM DIAMETER STORM SEWER TO PROPERTY LINE AND CONNECT TO EXISTING STORM SERVICE FOR HOUSE NO. 340. CONTRACTOR TO LOCATE AND EXPOSE EXISTING STORM SERVICE DURING CONSTRUCTION.
 - SANITARY SERVICES TO BE INSTALLED WITH A MINIMUM OF 2.4 M OF COVER AT PROPERTY LINE (WHERE MAINLINE SEWER ELEVATION ALLOWS), UNLESS NOTED OTHERWISE. CONTRACTOR TO USE VERTICAL SWEEPS AND FITTINGS, AS REQUIRED, TO CONNECT TO EXISTING SERVICES AT PROPERTY LINE.
 - SEPARATION DISTANCES BETWEEN SEWERS AND WATERMAINS AND SEWER SERVICES AND WATER SERVICES SHALL BE AS PER MECOP PROCEDURE F-6-1; IN GENERAL, 2.5 M HORIZONTAL SEPARATION BETWEEN PARALLEL INSTALLATIONS AND 0.5 M VERTICAL SEPARATION AT CROSSINGS WHERE THE WATERMAIN OR WATER SERVICE CROSSES UNDER THE SEWER. WHERE THIS SPATIAL SEPARATION CANNOT BE ACHIEVED, OTHER MEASURES ARE TO BE IMPLEMENTED, SUCH AS USE OF PRESSURE PIPE (350 KPA) FOR SEWERS, AS TO BE APPROVED BY THE CONTRACT ADMINISTRATOR.
 - FOR TYPICAL ROAD SECTIONS, REFER TO DWG. NO. 04.

DISCLAIMER:

THE INFORMATION PRESENTED ON THESE DRAWINGS IS PROVIDED FOR PUBLIC INFORMATION TO SOLICIT FEEDBACK ON THE MAJOR DESIGN ELEMENTS OF THE PROJECT CONCEPT AND SHOULD NOT BE RELIED UPON FOR CONSTRUCTION. TRITON ENGINEERING SERVICES LIMITED HAS MADE EVERY ATTEMPT TO ENSURE THE ACCURACY AND RELIABILITY OF THE INFORMATION PRESENTED; HOWEVER, DOES NOT ACCEPT ANY RESPONSIBILITY FOR THE ACCURACY, COMPLETENESS, LEGALITY OF THE INFORMATION AND DISCLAIMS ANY LIABILITY IN CONNECTION WITH THE USE OF THIS INFORMATION.



Storm	100.0m-200mm PVC SANITARY SEWER @ 1.0%	61.5m-300mm STORM SEWER @ 1.7%	8.6m-375mm STORM SEWER @ 3.4%	EX. 300mm HOPE STORM SEWER @ 3.25%
Sanitary		55.8m-200mm PVC SANITARY SEWER @ 1.3%	EX. 15.5m-200mm PVC SANITARY SEWER @ 1.86%	EX. 200mm PVC SANITARY SEWER @ 4.70%
℄ of Road Elevation	423.58	423.40	422.33	421.36
Station	0+130	0+140	0+150	0+220

B.M. 20-5982-4	Elev. 423.256
NAIL & WASHERS IN HP, ON THE EAST SIDE OF JOHN STREET IN BETWEEN HOUSE 340 & HOUSE 350	
B.M. 20-5982-5	Elev. 422.275
NAIL & WASHERS IN HP, ON THE EAST SIDE OF JOHN STREET IN FRONT OF HOUSE 370	
B.M. 20-5982-6	Elev. 421.939
NAIL & WASHERS IN HP, ON SOUTH SIDE OF WATERLOO STREET IN FRONT OF HOUSE 220	

DISCLAIMERS:

1. ALL EXISTING ELEVATIONS & DIMENSIONS TO BE CONFIRMED ON SITE. THE LOCATION OF UTILITIES IS APPROXIMATE ONLY AND SHOULD BE DETERMINED BY CONSULTING THE MUNICIPAL AUTHORITIES AND UTILITY COMPANIES CONCERNED. THE CONTRACTOR SHALL PROVE THE LOCATION OF UTILITIES AND SHALL BE RESPONSIBLE FOR ADEQUATE PROTECTION AGAINST DAMAGE.

No	DATE	REVISION	INITIAL
2	2023/10/23	ISSUED FOR PUBLIC INFORMATION	L.S.
1	2020/12/23	ISSUED FOR APPROVALS	L.S.

PRELIMINARY

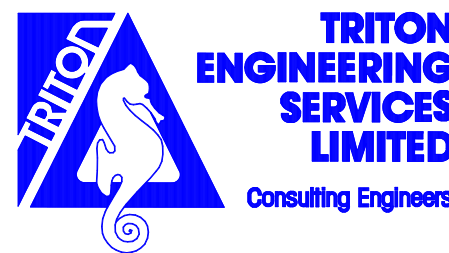
RECONSTRUCTION OF JOHN STREET

TOWNSHIP OF WELLINGTON NORTH (MOUNT FOREST)

TOWNSHIP OF WELLINGTON NORTH
7490 SIDEROAD 7 WEST
KENILWORTH, ON N0G 2E0

PLAN AND PROFILE
FROM STA. 0+120 TO WATERLOO ST

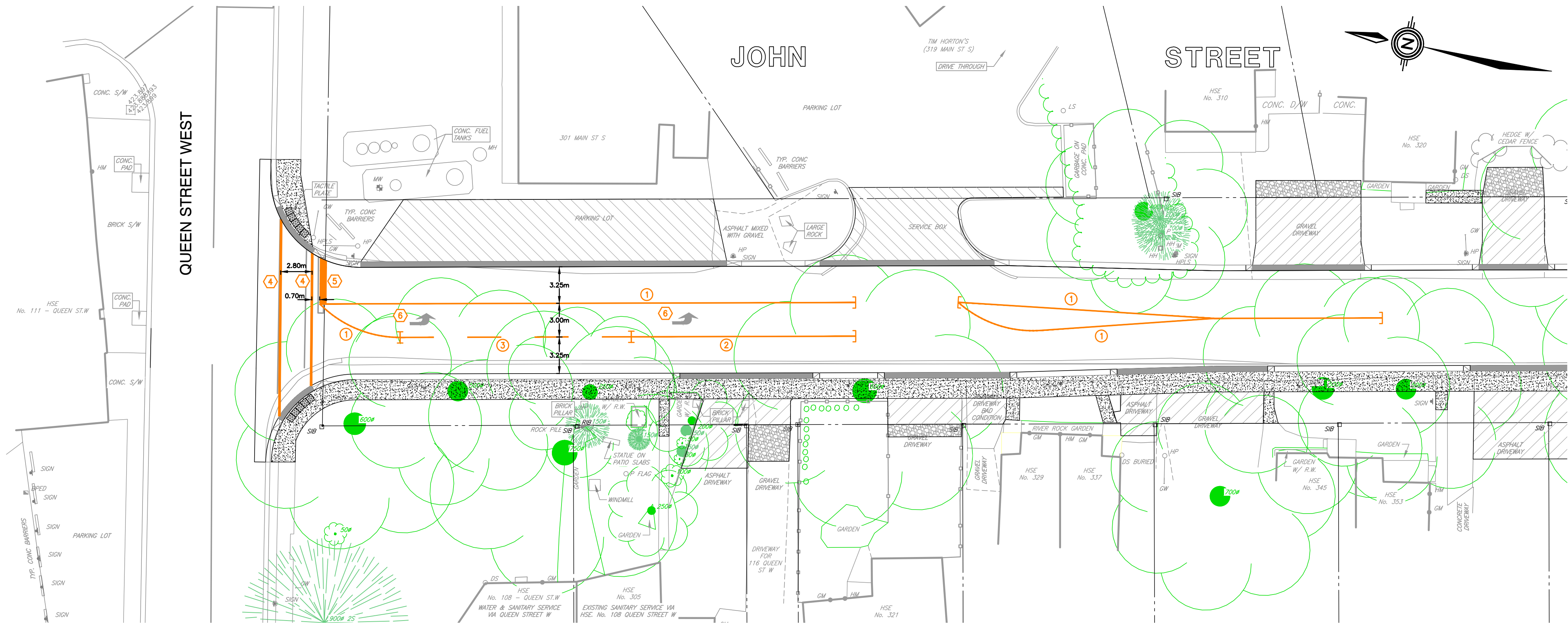
CONTRACT No.	5982-21
PROJECT No.	M5982
DESIGNED BY:	C.J.D.W.
CHECKED BY:	P.F.Z.
APPROVED BY:	L.S.
DATE:	OCTOBER 2020



SCALE:
H:1:250 H:1:500
V:1:50 V:1:100
(0.625") (1.25")
UNLESS OTHERWISE SHOWN

DRAWING
NUMBER

03



- LEGEND – PAVEMENT MARKINGS**
- | | |
|---------------------------|-----------------------|
| 1. SOLID YELLOW, 10cm | 4. SOLID WHITE, 20cm |
| 2. SOLID WHITE, 10cm | 5. SOLID WHITE, 60cm |
| 3. 333 DASHED WHITE, 10cm | 6. SYMBOLS |
| |]] LIMITS OF MARKINGS |

- NOTES:**
- – DENOTES PAVEMENT MARKING
 - – DENOTES PAVEMENT MARKING, DURABLE

DISCLAIMER:

THE INFORMATION PRESENTED ON THESE DRAWINGS IS PROVIDED FOR PUBLIC INFORMATION TO SOLICIT FEEDBACK ON THE MAJOR DESIGN ELEMENTS OF THE PROJECT CONCEPT AND SHOULD NOT BE RELIED UPON FOR CONSTRUCTION. TRITON ENGINEERING SERVICES LIMITED HAS MADE EVERY ATTEMPT TO ENSURE THE ACCURACY AND RELIABILITY OF THE INFORMATION PRESENTED; HOWEVER, DOES NOT ACCEPT ANY RESPONSIBILITY FOR THE ACCURACY, COMPLETENESS, LEGALITY OF THE INFORMATION AND DISCLAIMS ANY LIABILITY IN CONNECTION WITH THE USE OF THIS INFORMATION.

DISCLAIMERS:

1. ALL EXISTING ELEVATIONS & DIMENSIONS TO BE CONFIRMED ON SITE. THE LOCATION OF UTILITIES IS APPROXIMATE ONLY AND SHOULD BE DETERMINED BY CONSULTING THE MUNICIPAL AUTHORITIES AND UTILITY COMPANIES CONCERNED. THE CONTRACTOR SHALL PROVE THE LOCATION OF UTILITIES AND SHALL BE RESPONSIBLE FOR ADEQUATE PROTECTION AGAINST DAMAGE.

1	2023/12/23	ISSUED FOR PUBLIC INFORMATION	L.S.
No	DATE	REVISION	INITIAL

PRELIMINARY

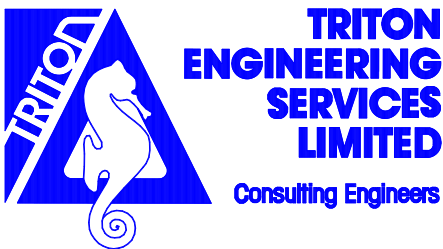
**RECONSTRUCTION OF
JOHN STREET**

TOWNSHIP OF WELLINGTON NORTH
(MOUNT FOREST)

TOWNSHIP OF WELLINGTON NORTH
7490 SIDEROAD 7 WEST
KENILWORTH, ON NOG 2E0

**LINE PAINTING
AND MARKINGS PLAN**

CONTRACT No.	5982-21
PROJECT No.	M5982
DESIGNED BY:	C.J.D.W.
CHECKED BY:	P.F.Z.
APPROVED BY:	L.S.
DATE:	JANUARY 2021



SCALE:	
1:250	1:500
(085247) (175117)	
UNLESS OTHERWISE SHOWN	
DRAWING NUMBER	05