

# Lynes Blacksmith Shop Kenilworth, Wellington-North

A Community Heritage Project



**The Lynes Blacksmith and Carriage Works  
played a central role in the history of  
Wellington County**

After generations of working and enjoying the property, the family wish to donate it to local heritage groups to be restored and shared for years to come



# **LYNES BLACKSMITH SHOP KENILWORTH, WELLINGTON-NORTH**

Business Plan, Prepared by the Lynes Blacksmith Shop Planning Committee

## **WHAT WE WANT TO CREATE AND FOR WHOM**

Our objective is to restore and reinvigorate the Lynes Blacksmith Shop in Kenilworth, Wellington-North and create a *seasonal experiential cultural and educational destination*. Opening from May to October, we would welcome school visits and programs in the spring and fall but change our emphasis to event-based programming during the high summer. The local community visitor will be at the heart of our mandate, but we would in time use established economic initiatives and our unique space to attract the wider tourist market.

*The Lynes Blacksmith Shop could become an integral part of a visit to Wellington-North. It is living history at the heart of our Township and for 130 years has bridged its two vital urban centres of Mount Forest and Arthur along with its rural townships of West Luther and Arthur. It can both symbolically and literally do that again.*

## **THE LYNES BLACKSMITH SHOP MATTERS BECAUSE...**

### **It is a gift**

This kind of generosity is rare. The Lynes family has agreed to donate the property and buildings back to the people who drive by it everyday. This is an *opportunity* not an obligation. We have all been entrusted with the future of this cultural resource – we just have to seize it, dream it and make it happen.

### **It is unique**

Even amongst heritage blacksmith shops, ours is special. In its original rural setting and untouched for over 65 years, our blacksmith shop is authentic. There are no architectural modifications to reverse. The edges may look a little rough, but the bones of the structure are strong. This is how heritage experts hope to find buildings but seldom do.

### **It is about community**

This kind of community initiated project can build a shared identity and increase collaboration across town lines. Partnerships are already well under way. We have heard from blacksmith associations, artisanal iron forgers, educators, students, historians, residents and dozens of volunteers who want to be a part of this exciting adventure. Restoring our built heritage can build Wellington-North's sense of pride and cohesion.

### **It is a new kind of role for the Municipality in cultural and economic development**

It is a positive role – with a more pro-active and broader engagement with the public. As a council, you have spoken to the need for many of the benefits the blacksmith shop could bring to Kenilworth and to Wellington-North. Accept this gift and the Municipality becomes both protector and promoter of small town identity.

# **LYNES BLACKSMITH SHOP KENILWORTH, WELLINGTON-NORTH**

Business Plan, Prepared by the Lynes Blacksmith Shop Planning Committee

## **VISION STATEMENT**

OUR VISION IS DR. FRANK LYNES' VISION:

*to restore, repurpose and share the Lynes Blacksmith Shop and Homestead with visitors from both near and far and to keep it relevant for future generations.*

## **OUR MANDATE: CLARIFYING OUR PURPOSE**

Conduct educational programs linking the blacksmith shop with curriculum themes of transportation, industry, rural lives and local heritage

Create programs that engage children and allow adults to indulge their interests through classes, events, speakers, workshops or concerts

Share the restored site and grounds with other cultural groups

Create exhibits showcasing the history of the shop, the Lynes family, Kenilworth and Wellington County

Stimulate interest in local heritage, community projects and volunteerism



**Inside is the story of our past**

The way we worked, travelled,  
manufactured and lived



**Hand-forged tools at the ready**

# **LYNES BLACKSMITH SHOP KENILWORTH, WELLINGTON-NORTH**

Business Plan, Prepared by the Lynes Blacksmith Shop Planning Committee

## **AUDIENCE / TARGET MARKET**

Our municipality has already made great strides in leveraging its cultural assets to promote economic investment and tourism. The Cultural Roundtable, the Fireworks Festival, Butter Tarts & Buggies, the Farmers' Market, Doors Open and the new Community Initiated Project Assistance Program are already there for support. The Lynes Blacksmith Shop would enhance each one of those events.

We offer an alternative to big box and fast food. The wider tourist market will visit small towns for their sense of history and their sense of place and of simpler times. Projects like the Lynes' Blacksmith Shop set us apart as a great place to visit and to live.

## **GOVERNANCE**

Initially, an overseeing Board will govern the restoration phase of the Lynes Blacksmith Shop. The Board will be made up of the Planning Committee as well as representatives from Kenilworth residents, the Municipality and the Ontario Association of Blacksmiths.

Board Members will divide and assume responsibilities for Volunteers, Programs and Events, the Building site, Artifact Conservation, Education, Sales and Marketing and Finances.

## **ORGANIZATIONAL MANAGEMENT**

This is a totally Volunteer Community Heritage Program. Salaried or paid staff would change the culture of this grass roots project and be an immediate financial burden. However, professional in-kind assistance and guidance will be essential. We have already received superb guidance from Wellington County Museum & Archives.

## **VOLUNTEERISM**

The role of the Volunteer Co-ordinator will be a very important one. We know our success relies on the strength of community volunteers, and this project will attract many diverse groups including students, heritage groups, seniors, service clubs, and trade and business partners. Volunteerism will foster a sense of ownership with this project.



# LYNES BLACKSMITH SHOP KENILWORTH, WELLINGTON-NORTH

## MARKETING

Once costs are measured against benefits, we will use any or all of the following for marketing The Lynes Blacksmith Shop:

Township Development Initiatives, promotional websites, print and social media, brochures, local television and radio, heritage and blacksmith publications etc.

The Mount Forest Museum & Archives, the Arthur Historical Centre and the Wellington County Museum & Archives can all be “signposts” for the blacksmith shop.

## IDEAS TO GENERATE INCOME

Revenue sources for the Lynes Blacksmith Shop may include any or all of the following:

- Admission fees and Membership
- Blacksmith classes
- On-site shop, souvenirs, relevant products
- Programming Income from school visits, teacher tours,
- Speaker series
- Rental of grounds for special events or exhibits
- Part of day trip tours
- Donations or fees from festivals, competitions

## PROGRAMS AND SERVICES

Hours of Operation would be similar to seasonal “cottage hours.” (Mid-May to Hallowe’en, mostly weekends to connect with existing festivals and celebrations)

Small barn/shed would be used for historical exhibits in rotation. Themes could include the family, the work, the road, the home.

Educational programs, both elementary and secondary, will be created under the supervision of trained staff from WCMA and in conversation with educators.

Adult and family blacksmith and artisanal forge classes are very popular. Professional blacksmiths, artists and scholar have already come forward.

Property could become an event venue for agricultural, heritage, horticultural and blacksmith festivals or events.

# **LYNES BLACKSMITH SHOP KENILWORTH, WELLINGTON-NORTH**

## **PHYSICAL SITE AND BUILDINGS**

A site plan has been drawn up and included in this information package.

An environmental assessment was made available by Krysia Lynes which showed no major problems.

The “buildings” include the shop, the house and the barn.

**Restoration and repair of the blacksmith shop is the first priority. Making it safe and welcoming for visitors is paramount.**

The shop is 1550 square feet. The original stone walls are in good condition and were repointed 25 years ago. The steel roof appears sound. Built on a floating foundation, a dirt floor covers the forge area. Floor planking in rest of shop can be restored.

The loft area and stairs will be made completely off limits to visitors.

There must be a thorough cleaning out to separate relevant artifacts from those items that can be sold off.

**The Planning Committee knows they will be undertaking the following:**

Initial inspections suggest posts will have to be added and all floors levelled off.

Accessibility needs will and can be met.

The chimneys will have to be rebuilt. Heritage materials are already being collected.

Landscaping is needed with vigorous pruning.

The shop appears sunken from the street, but that is only because the road is much higher than in 1883. Creative path and railing system will be developed.

## **PARKING**

Parking schemes are being investigated. Tim Epoch has agreed to the use of the lots on either side of his garage. However, parking east of Highway 6 is preferred. The possibility of off-hour parking at Sacred Heart Church and/or the former Sacred Heart School will be pursued as well as the vacant lots owned by the Township on the North side of sideroad 7.

Signage will be erected according to code and after discussion with Township.

## **HISTORICAL COLLECTION**

A formal inventory and collection plan will be supervised by Patty Whan, WCMA.

Groups of volunteers will be trained on handling, storage and conservation techniques.

WCMA have agreed to store artifacts in proper environmental conditions until ready for exhibition. The inventory will be digitally catalogued using existing museum software at MFMA by their volunteers at no extra cost.

**LYNES BLACKSMITH SHOP  
KENILWORTH, WELLINGTON-NORTH**

**FINANCIAL**

**Ongoing fixed costs, provided by Krysia Lynes**

Heat	\$1500.00/yr
Hydro	\$ 500.00/yr
<b>Total</b>	<b>\$2000.00/yr**</b>

**\*\* This is the financial commitment that is required by the Township if they are to accept ownership of the Lynes property. Taxes and insurance would be under the municipal ownership.**

There will be no mortgage or debt on the land transfer, as well as no further financial commitment asked of the Township at this time.

**Capital repair costs** can only be approximate at this stage, but the Planning Committee will seek those funds primarily through a community capital campaign and also some public grant programs.

Some grants that have been looked at include Ontario Trillium Foundation, Seniors Community Grant Program, HODG etc.

**TIMELINE**

We will start the artifact removal process as soon as weather permits. A list of volunteers has been started.

**It is important to set up public viewings of the blacksmith shop from the beginning of the project. The community will be more invested if they understand the work that lies ahead. The before and after story will draw more interest.**

**This year we would like to commit to public viewings by June for:**

- Mount Forest Homecoming**
- Fireworks Festival**
- Sacred Heart Annual Garden Party**
- Doors Open**

**The Planning Committee  
Lynes Blacksmith Shop of Kenilworth**

Kate Rowley (Chair) – Director and Volunteer, Mount Forest Museum & Archives

Janice Hindley – Administrator, Wellington County Museum & Archives

Libby Walker – Education and Programming, WCMA

(and Patty Whan, Conservator WCMA)

Campbell Cork – Board of Directors, MFMA, journalist

Dan Yake – Council Member, Township of Wellington North

Robert MacDonald – Arthur Historical Society

Jack Benham – Arthur Historical Society

Penny Renken – Volunteer, MFMA, AHS, Wellington-North Cultural Roundtable

Helmut Renken – Arthur Historical Society

Velma Manser – Volunteer MFMA, Kenilworth resident

Barry Manser – Kenilworth resident

Ian Turner – Arthur Historical Society





**With hard work and a community of volunteers,  
the shop can be brought back to life and become a  
unique cultural experience and a valuable  
heritage destination**



February 27, 2017

Kenilworth Blacksmith Shop Committee  
Mount Forest Museum and Archives  
102 Main Street South  
Mount Forest, ON N0G 2L0

Attention: Kate Rowley, Chair

Dear Kate:

Re: Lynes Blacksmith Shop

At a recent meeting of the Cultural Roundtable, it was agreed that we are in total support of the work your committee is doing in developing a business plan for conserving the Lynes Blacksmith Shop in Kenilworth. It is important that this structure and contents be protected as an important historic feature of Kenilworth and The Township of Wellington North's cultural heritage.

The Wellington North Cultural Roundtable is currently developing a listing of historic buildings located within the Township and the Lynes Blacksmith Shop would be a significant addition. We have seen the documentation of the site and are impressed with the intact quality of the building and its contents. We also foresee the educational and tourism value of the project when it is fully restored.

Congratulations to you and your committee on your efforts and we feel this project is worthy of Township recognition and support.

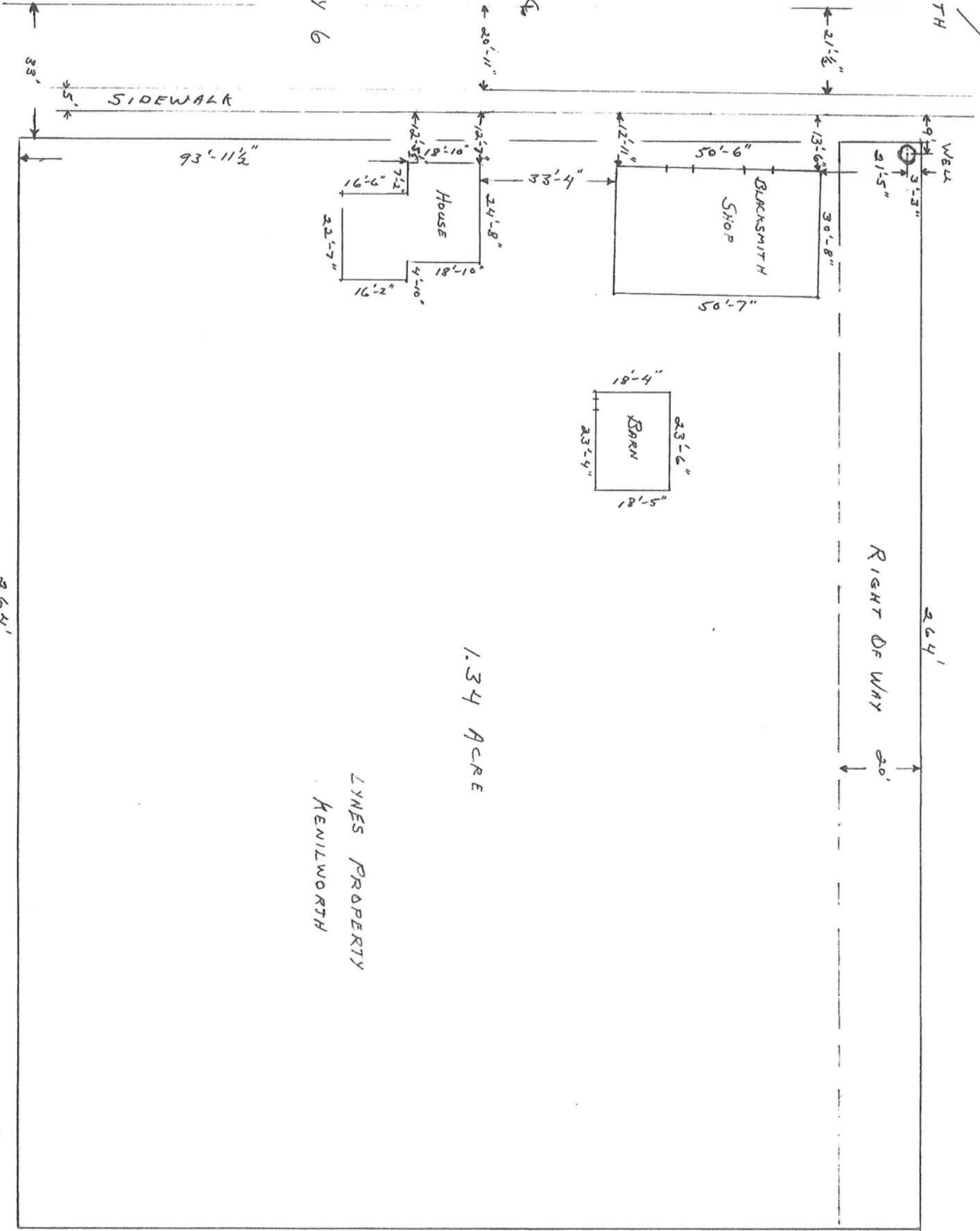
Sincerely,

*Jim Taylor*

James Taylor, Chair  
Wellington North Cultural Roundtable

*The Wellington North Culture Roundtable is an advisory committee to Council and its' purpose is to build community capacity in cultural development by facilitating communication and supporting collaboration among community, business and municipal interests.*

NORTH



HWY 6

SIDEWALK

93'-11 1/2"

HOUSE

BLACKSMITH SHOP

WELL

BARN

RIGHT OF WAY

1.34 ACRE

LYNES PROPERTY  
KENILWORTH

264'

264'

20'

241'



We need your help  
All Volunteers and Donations  
are welcome

Please contact Kate Rowley  
Mount Forest Museum & Archives  
(519) 323-4755  
[archive@mfheritage.ca](mailto:archive@mfheritage.ca)

**LYNES BLACKSMITH SHOP  
KENILWORTH, WELLINGTON-NORTH**

FEBRUARY 2017