



# Township of Wellington North

P.O. Box 125 • 7490 Sideroad 7 W • Kenilworth • ON • N0G 2E0

## Regular Meeting of Council

Monday, January 25, 2010 – 7:00 p.m.

Municipal Office Council Chambers, Kenilworth

### AGENDA

Page 1 of 3

AGENDA ITEM	PAGE NO.
A. <u>CALLING THE MEETING TO ORDER</u> - Mayor Broomhead	
B. <u>PASSING AND ACCEPTANCE OF AGENDA</u>	
C. <u>DECLARATION OF PECUNIARY INTEREST</u>	
D. <u>MINUTES</u> 1. Regular Council Meeting, January 18, 2010	01
E. <u>BUSINESS ARISING FROM MINUTES</u>	
F. <u>STANDING COMMITTEE, STAFF REPORTS, MINUTES AND RECOMMENDATIONS</u> 1. Fire Committee - Minutes, November 16, 2009 2. Recreation Committee - Minutes, November 22, 2010 (to be tabled at meeting)	08

<b>AGENDA ITEM</b>	<b>PAGE NO.</b>
<b>G. <u>CORRESPONDENCE FOR COUNCIL'S INFORMATION AND DIRECTION</u></b>	
1. Maitland Valley Conservation Authority Re: 2010 Priorities, Budget and Levy	11
2. Grand River Conservation Authority Re: 2010 Budget and Levy Meeting	18
<b>H. <u>BY-LAWS</u></b>	
1. 07-10 Being a By-law to Authorize the Execution of an Agreement between the Corporation of the County of Grey and the Corporation of the Township of Wellington North (Boundary Road Agreement and Maintenance Costs for Grey Road 109)	52
2. 08-10 Being a By-law to Appoint a Building Inspector for the Corporation of the Township of Wellington North (Patty Wright)	57
3. 09-10 Being a By-law Imposing Special Annual Drainage Rates Upon Land in Respect of which Money is Borrowed Under the <i>Tile Drainage Act</i> .	58
4. 10-10 Being a By-law to Authorize a Licence Agreement with Respect to the Placement of Antennae on the Communications Tower at the Township's Offices.	60
<b>I. <u>ACCOUNTS</u></b>	67
<b>J. <u>OTHER/NEW BUSINESS</u></b>	
<b>K. <u>ITEMS FOR COUNCIL'S INFORMATION</u></b>	
Grand River Conservation Authority - Newsletter, GRCA Minutes, January 2010, Volume 15 – No. 1	



**THE CORPORATION OF THE  
TOWNSHIP OF WELLINGTON NORTH**

**REGULAR MEETING OF COUNCIL**

**Monday, January 18, 2010**

**7:00 p.m.**

**Members Present:**

**Mayor: Mike Broomhead  
Councillors: Ross Chaulk  
Bob Mason  
Dan Yake**

**Also Present: Chief Administrative Officer/Clerk: Lorraine Heinbuch  
Executive Assistant: Cathy Conrad**

**Absent: Councillor: John Matusinec**

The meeting was held in the Municipal Office Council Chambers, Kenilworth.

A. **CALLING THE MEETING TO ORDER**

Mayor Broomhead called the meeting to order.

B. **PASSING AND ACCEPTANCE OF AGENDA**

**Moved by: Councillor Yake  
Seconded by: Councillor Chaulk**

*THAT the Agenda for the January 18, 2010 Regular Meeting of Council be accepted and passed with the addition of:*

**CORRESPONDENCE FOR COUNCIL'S INFORMATION AND DIRECTION**

5. *County of Wellington Police Services Board  
Re: Notice from County of Wellington Police Services Board that they will no longer administer County of Wellington By-law Number 5111-09 Taxi By-law; as authorized by County of Wellington By-law Number 5105-09 to Execute a Reciprocal Licensing Arrangement and Delegation Agreement relating to the licensing of Accessible Taxicabs, Taxicabs and Limousines*

**Resolution Number: 1**

**Carried**

**THE CORPORATION OF THE  
TOWNSHIP OF WELLINGTON NORTH**

**REGULAR MEETING OF COUNCIL**

**Monday, January 18, 2010**

**Page Two**

C. **DECLARATION OF PECUNIARY INTEREST AND GENERAL NATURE  
THEREOF**

None declared.

D. **MINUTES**

1. Public Meeting, January 11, 2010
2. Regular Council Meeting, January 11, 2010

**Moved by: Councillor Yake  
Seconded by: Councillor Mason**

*THAT the minutes of the Public Meeting and the Regular Meeting of Council held on January 11, 2010 be adopted as circulated.*

**Resolution Number: 2**

**Carried**

E. **BUSINESS ARISING FROM MINUTES**

None.

F. **DELEGATION**

1. Waterloo Wellington Local Health Integration Network  
Sandra Hanmer, CEO,  
Kathy Durst, Chair,  
Dale Small, Township Representative  
Re: Rural Health Care Review and Other Health Care Activities

Sandra Hanmer and Kathy Durst presented a review of rural health care and other health care activities involving the Waterloo Wellington Local Health Integration Network

**THE CORPORATION OF THE**  
**TOWNSHIP OF WELLINGTON NORTH**  
**REGULAR MEETING OF COUNCIL**

**Monday, January 18, 2010**

**Page Three**

F. **DELEGATION** (continued)

1. Waterloo Wellington Local Health Integration Network (continued)  
Sandra Hanmer, CEO,  
Kathy Durst, Chair,  
Dale Small, Township Representative  
Re: Rural Health Care Review and Other Health Care Activities

Dale Small, Mount Forest and William Dinwoody, Erin have been appointed to the board through Order of Council. The entire board will turnover by June 2011

The LHIN is not accountable for capital spending but is accountable for program spending. Affordable assisted living housing is needed for seniors. The LHIN works with others in the community to provide assisted living. Funds will be spent based on a health care model developed by the Province focusing on areas needing servicing, rather than on a per capita basis.

The Integrated Health Service Plan identifies key priorities, measures of success, system improvement initiatives and outcome expectations for the local health system for a three year period.

Guiding principles of the updated Integrated Health Service Plan for 2010 – 2013 include building on the goals of the current IHSP; alignment with provincial priorities; focusing on system performance improvement; creating action-oriented activities related to each priority; and a partnership between the WWLHIN, health service providers, and other stakeholders will advance the priorities

The WWLHIN Mission/Vision includes improving accessibility to Health Services; improving the health of the population; enhancing system effectiveness; and building community capacity to achieve a sustainable health system.

**THE CORPORATION OF THE  
TOWNSHIP OF WELLINGTON NORTH**

**REGULAR MEETING OF COUNCIL**

**Monday, January 18, 2010**

**Page Four**

F. **DELEGATION** (continued)

1. Waterloo Wellington Local Health Integration Network (continued)  
Sandra Hanmer, CEO,  
Kathy Durst, Chair,  
Dale Small, Township Representative  
Re: Rural Health Care Review and Other Health Care Activities

The community's eight priorities for 2010 - 2013 are improving wait times for MRI exams; improving access to emergency department (ED) care; improving access to primary care; improving access to, and coordination of, addictions and mental health services; improving chronic disease prevention and management improving outcomes for stroke patients through integrated programs; decreasing alternate level of care (ALC) days; and improving patient safety and enhancing quality of care.

Four key elements to the proposed Rural Health Services Framework are comprehensive primary health care; community support services and home-based care; hospital-based care; and an integrated rural health care network

The long term goal is healthy & sustainable rural communities. Need to create an integrated strategy for rural communities which links social, economic development and environmental sustainability strategies with rural health plan.

G. **CORRESPONDENCE FOR COUNCIL'S INFORMATION AND DIRECTION**

1. Cliff Heffernan, Arthur Terry Fox Run  
Re: Request for Donation of Use of Arthur Optimist Pavilion Park for Event
  - Received as information and forwarded to the Finance Committee to be included in the 2010 Budget as Grants and Donations

**THE CORPORATION OF THE  
TOWNSHIP OF WELLINGTON NORTH**

**REGULAR MEETING OF COUNCIL**

**Monday, January 18, 2010**

**Page Five**

**G. CORRESPONDENCE FOR COUNCIL'S INFORMATION AND DIRECTION (continued)**

2. Pat Salter, GRCA Board Member  
Re: Ontario Honours and Awards Secretariat Poster  
- Received as information
3. Saugeen Conservation Authority  
Re: Municipal Grouping #4 Source Protection Committee  
Representative – Saugeen, Grey Sauble, Northern Bruce Peninsula  
Source Protection Region  
- Received as information
4. St. Mary Catholic School, Grade 3 Class  
Re: Thank You for Scholarship – Northern Lights Christmas Festival  
- Received as information
5. County of Wellington Police Services Board  
Re: Notice from County of Wellington Police Services Board that they will no longer administer County of Wellington By-law Number 5111-09 Taxi By-law; as authorized by County of Wellington By-law Number 5105-09 to Execute a Reciprocal Licensing Arrangement and Delegation Agreement relating to the licensing of Accessible Taxicabs, Taxicabs and Limousines

A meeting with the five municipalities involved will be held in the near future in regard to administration of the Taxi By-law.

**H. ACCOUNTS**

**Moved by: Councillor Yake  
Seconded by: Councillor Chaulk**

***THAT the Council of the Corporation of the Township of Wellington North approve the accounts totalling \$300,405.33 for payment.***

**Resolution Number:**

**Carried**

/6



**THE CORPORATION OF THE  
TOWNSHIP OF WELLINGTON NORTH**

**REGULAR MEETING OF COUNCIL**

**Monday, January 18, 2010**

**Page Six**

**I. OTHER/NEW BUSINESS**

1. Report of Livestock Valuer  
Re: Livestock Claim

**Moved by: Councillor Mason**  
**Seconded by: Councillor Yake**

*THAT the Council of the Corporation of the Township of Wellington North authorize payment of \$410.00 to John Manion for livestock claims;*

*AND FURTHER THAT Glenn O'Rourke be paid \$75 for Livestock Valuer fees and \$32.50 for mileage.*

**Resolution Number: 4**

**Carried**

**J. COUNCILLOR'S PRIVILEGE**

Councillor Chaulk inquired about the two openings for directors of Wellington North Power and what is being done to fill the vacancies. Mayor Broomhead will discuss this at the Wellington North Power Board meeting next week.

Mayor Broomhead attended the "Battle of the Blades" in Arthur on the weekend. The participants put on a great show.

**K. NOTICES OF MOTION**

None tabled

**THE CORPORATION OF THE  
TOWNSHIP OF WELLINGTON NORTH**

**REGULAR MEETING OF COUNCIL**

**Monday, January 18, 2010**

**Page Seven**

L. **CONFIRMING BY-LAW**

**Moved by:** Councillor Yake

**Seconded by:** Councillor Chaulk

*THAT By-law Number 6-10 being a By-law to Confirm the Proceedings of the Council of the Corporation of the Township of Wellington North at its Regular Meeting held on January 18, 2010 be read a First, Second and Third time and finally passed.*

**Resolution Number: 5**

**Carried**

M. **ADJOURNMENT**

**Moved by:** Councillor Mason

**Seconded by:** Councillor Yake

*THAT the Regular Council meeting of January 18, 2010 be adjourned at 7:49 p.m.*

**Resolution Number: 6**

**Carried**

---

C.A.O./CLERK

---

MAYOR

## TOWNSHIP OF WELLINGTON NORTH

### FIRE COMMITTEE MEETING MINUTES

**Monday, November 16, 2009 – 7:00 pm - Council Chambers**

Members Present: Councillor John Matusinec, Chair  
Jim Morrison, Arthur Fire Chief(s)  
Ron MacEachern, Mount Forest Fire Chief  
Bill Hieber, Mount Forest Deputy Fire Chief  
Bob McKenzie, Arthur Deputy Fire Chief

Also Present: Michelle Stone, Administrative Assistant

Meeting was called to order at 7:00 pm.

#### **1. Declarations of Pecuniary Interest**

None declared.

#### **2. Approval of Minutes from August 13, 2009, 2009 Minutes**

Moved By: Ron MacEachern

Seconded by: Bob McKenzie

*That the Minutes from the August 13, 2009 meeting be accepted.*

Carried

#### **3. Review of By-Laws - E + R (Establishing and Regulating By-Laws)**

Appendix to By-law – Mutual Aid By-law (before Solicitor for review)

- When can that be brought to Committee
- Need to get something signed from Fergus and/or Hanover depending on distance – may need for both for Water & Ice Rescues for both departments – Ron can get something written up and then signed
- What about Aerial truck?? Need to have something in writing for this usage if ever required.

#### **4. SCBA (Self Contained Breathing Apparatus) Replacements**

- Arthur has had 1 night of training and there will be 2 more – all training needs to be completed prior to putting the new Paks in use for fire fighting.. The old ones will then be delegated for fire fighter training exercises.

#### **5. Mount Forest Fire Hall – Roof Repairs**

- The Fire hall will be having a new roof installed by Cruickshank Roofing. This will begin this week (depending on weather) and will take approximately 2 weeks to complete.

#### **7. New Fire Truck**

- Specification Committee is comprised of Chief Jim Morrison, Deputy Chief Bob McKenzie, Adam Bolen and Dave Hodgekinson.
- RFP's have been received (Oct 30/09) and four companies submitted quotes. These have been reviewed and will be submitted to the Fire Committee to decide and then take to Council for approval at the December 14<sup>th</sup>, 2009 Council Meeting. Want to be able to order before year end.
- Need to have John Jeffery confirm the money amount allocated for the new truck. There is a \$60,000.00 dollar spread from quotes – all had the same detailed requirement list and two fill the requirement list better.
- Regarding the new HST tax coming in July 2010 - will it affect this purchase as delivery will not be until after the new tax comes in effect.

#### **8. Health and Safety**

- The Fire Departments may do their own individual health & Safety with one joint meeting yearly. These reports will be emailed to Michelle to put into Township File and also forwarded to John Matusinec and Lori Heinbuch.

#### **9. New Business**

- A job description is needed for Jason Benn as soon as possible – should this come from Lori?

- At a meeting with EMO (Emergency Management Officer) Linda Dickson it was brought up that Arthur Fire Department should have a permanent full size generator. Jim was told by Lori that this would be done through a JEPP Grant but that they were done for 2009, and would have to get the specs done and go in the 2010 JEPP Grant Applications. It was suggested that a portable unit could be shared with the Arena in Arthur but this is not feasible for Emergency management. The Fire Hall needs to have a permanent generator. They do have specs and the approximant cost is \$23000.00.

- John requested that each Department do a new 5-year plan and send to Michelle so it can be saved on Township system, and can be forwarded to John M. and Lori.
- Inquire from John Jeffery / Lori if the Fire Departments can get their hands free devices for the Fire Vehicles now or have to wait for Budget to be completed.  
John M. informed the Departments that there is no money in this years' budget for hands free, but the Fire Departments would like the ability to at least text from their own vehicles when they are in transit to a call or to the Fire Stations in their own vehicles. Does the Township have "texting" in their plan? Also, the Deputies inquired about the Township re-imbursing them for their personal cell phone costs relating to the Fire Department business. Jim has a Township cell phone and Ron receives his expenses back every six months. Also, what about when the Fire Chief(s) is away and the Deputies have to then use their own phones?
- VIFF - Volunteer Insurance for Fire Fighters – would like to look into getting for the Departments. They would like the Representative to come to a Committee Meeting and see what John thinks, and then possibly a Council Meeting. They offer a much more specific and better coverage specified to Volunteer Fire Departments & Fire Fighters.
- Jim questioned again about insurance when using personal vehicles for Fire Department business – i.e. taking cylinders to Fergus for refills.
- Regarding senior fire fighters –this will need to be handled "in-department" for those not doing meetings/training / weekends – The Fire Departments and /or Township could face repercussions / liability – and what about all the other Fire Fighters who do their meetings/training / weekends but still gets same remuneration as those who do not?
- The question of how to deal with Members recognition for long serving – what to do – one will be 50 years - not done by twnshp – department can do their own recognition – could possibly have a presentation at a Council Meeting (for a volunteer recognition)

#### 10. Next Meeting

The next meeting is scheduled for Tuesday, December 8<sup>th</sup>, 2009 at 7:00 pm in the Council Chambers in Kenilworth.

#### 11. Adjournment

Moved By: Bill Hieber

Seconded by: Jim Morrison

*That the meeting be adjourned at 7:55 pm.*

Carried

# Maitland Valley Conservation Authority



*Providing leadership to protect and enhance our water, forests and soils!*

January 12, 2010

Township of Wellington North  
Box 125  
Kenilworth, Ontario  
N0G 2E0

Attention: Mayor Mike Broomhead and Members of Council

Dear Mayor Broomhead:

**Re: 2010 Priorities, Budget and Levy**

I am writing to you at this time to provide Council with information on the Maitland Valley's priorities, budget and levy for 2010.

In 2009 the MVCA's Board of Directors prepared a strategic plan for the organization. This strategic plan will help the MVCA to focus its resources over the next five years. The attached newsletter outlines the MVCA's priorities for the coming year and also outlines the levy distribution for 2010.

The total budget for 2010 is \$2,187,126 which is down from the 2009 budget and is essentially the same as budget levels in 1993. The 2010 budget includes an increase in the total levy and service fees to help cover the cost of phasing in the new salary grid, increases in support costs and for maintaining infrastructure and equipment.

The Township of Wellington's share of the 2010 levy is \$26,541. While the overall proposed levy increase for 2010 is \$45,179, (5% increase over the 2009 levy), your municipality's levy will only increase by \$1,080 (4.24%). This is primarily due to the fact that Wellington North's assessment did not increase as much as other municipalities in the watershed. Therefore Wellington North's share of the total levy has decreased from 2.81% to 2.80%.

It should be noted that the MVCA's levy apportionment schedule is developed by the Ministry of Natural Resources and is based upon information provided to MNR by MPAC.

MAITLAND VALLEY CONSERVATION AUTHORITY  
1093 Marietta Street, Box 127, Wroxeter, ON N0G 2X0  
519 335-3557 Fax: 519 335-3516 Email: maitland@mvca.on.ca



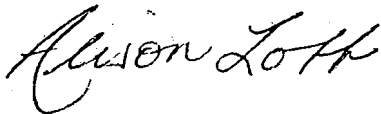
In 2006 the MVCA's Board of Director's developed a five year plan to try and increase the MVCA's funding for operating and capital to a level that would stabilize our core services and provide a minimal level of funding for maintaining our infrastructure. The Board of Directors had originally planned to try and stabilize the MVCA's funding for operating and capital over a five year period but have now decided to lengthen the stabilization period to 10 years instead. This will help reduce the size of increases to the levy over the next six years. 2010 marks the fourth year of the Board's 10 year financial stabilization plan. Stabilization of the MVCA's operating and capital funding will ensure that the MVCA has sufficient funding to maintain qualified and experienced staff and to cover increases in support costs as well as maintenance of conservation areas, equipment/infrastructure. This plan will also allow us to maintain our core services related to soil and water conservation and flood safety. It should be noted that the 2010 budget will still be smaller than it was in the early 1990's.

The Board of Directors plans to vote on the budget on Wednesday, February 17, 2010. Please advise your representative on the Board as to whether you would like them to support the budget or not. If you have any questions on the MVCA's priorities, budget or levy please contact me, your Director or Phil Beard, MVCA General Manager/Secretary-Treasurer.

In closing we would like to thank Council for their support in 2009 and we look forward to working with you in 2010.

Sincerely,

MAITLAND VALLEY CONSERVATION AUTHORITY

A handwritten signature in cursive script that reads "Alison Lobb".

Alison Lobb,  
Chair

Encl.

# Maitland Valley Conservation Authority



*Providing leadership to protect and enhance our water, forests and soils!*

## *Please Join Us!*

The Maitland Valley Conservation Authority will hold its Annual Meeting on Wednesday February 17, 2010. The Annual Meeting of the Maitland Source Protection Authority will be held at the same time. The MVCA Board of Directors would be pleased to have councillors and staff from your municipality attend the meeting. The draft agenda is outlined below. A detailed agenda will be sent to each councillor the week of January 25, 2010. For more information please contact the MVCA office at 519 335-3557.

**Date:** Wednesday February 17, 2010  
**Time:** 7:30 p.m. to 9:00 p.m.  
**Location:** MVCA Administration Centre - downstairs meeting room

1. Welcome and introduction of guests
2. Remarks by MVCA Chair
3. Presentation on MVCA Climate Change Trends Report and Potential Local Impacts
4. Presentation on MVCA Strategic Plan
5. Service Awards
6. Election of Officers for 2010
7. Adjournment

*Light refreshments will be served.*



# Conservation Update

Maitland Valley Conservation Authority

January 2010



## 2010 MVCA Priorities

The Directors of the Maitland Valley Conservation Authority have developed the organization's 2010 draft budget and identified key priorities for the year.

The MVCA Board of Directors and staff have recently completed the development of a strategic plan for the organization. This plan will help focus the efforts of the MVCA over the next five years. The key priority identified in the strategic plan is building resilience on the landscape to reduce flooding and soil erosion and improve water quality in the watershed.

Specific priorities for 2010 include:

- Updating flood forecasting services in response to climate changes the watershed is experiencing.
- Developing a flood and erosion reduction strategy for the lands upstream of Harriston.
- Completing gully erosion potential mapping and delivering a gully and bluff workshop.
- Developing a business case to support the strategic plan for review by MVCA member municipalities.
- Developing a communications strategy for the organization.
- Continue efforts to develop a Watershed Conservation Fund to support soil and water conservation projects.

The 2010 levy increase will enable the MVCA to implement and evaluate these priorities. The MVCA Directors would like to extend their thanks to the member municipalities for their support over the past year.

## Mission

The Maitland Valley Conservation Authority (MVCA) is a local organization dedicated to providing leadership to protect and enhance our water, forests and soils.

## Key Facts

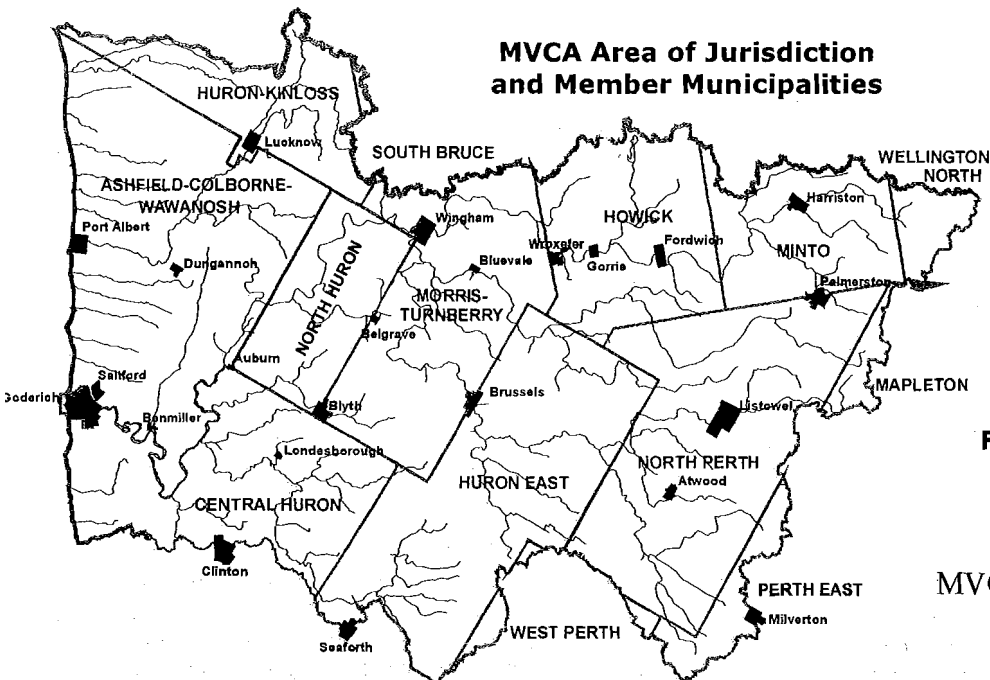
1. Conservation Authorities are jointly owned by the municipalities in the watershed.
2. The purpose of the MVCA is to help people protect water and related resources for present and future generations.
3. Conservation Authorities were established by the provincial government at the request of municipalities, to be funded jointly by the province and municipalities.
4. The activities of the MVCA are driven by local municipalities, landowners and community organizations. We are committed to providing effective community-based conservation services in a cost-efficient manner.



**2010 Draft Assessment: \$14.87 per \$100,000 of assessment (\$17.20 in 2009)**

**Draft Levy Schedule for 2010**

Municipality	% of Municipality in Watershed	2008 for 2009 CVA (modified) in Watershed	CVA Based Apportionment Percentage	Draft 2010 General Levy	Approved 2009 General Levy	2009-2010 Difference
Twp. of Ashfield-Colborne-Wawanosh	100	\$763,814,708	11.9730	\$113,596	\$104,091	\$9,505
Municipality of Central Huron	76	\$657,404,197	10.3050	\$97,771	\$95,083	\$2,688
Town of Goderich	100	\$872,604,971	13.6783	\$129,775	\$121,402	\$8,373
Twp. of Howick	92	\$234,914,614	3.6823	\$34,936	\$34,449	\$487
Municipality of Huron East	72	\$604,300,686	9.4726	\$89,873	\$87,399	\$2,474
Twp. of Huron-Kinloss	43	\$449,738,166	7.0498	\$66,886	\$58,214	\$8,672
Twp. of Mapleton	5	\$49,286,422	0.7726	\$7,330	\$6,793	\$537
Town of Minto	64	\$465,374,207	7.2949	\$69,212	\$65,567	\$3,645
Municipality of Morris-Turnberry	95	\$275,698,132	4.3216	\$41,002	\$41,150	-\$148
Twp. of North Huron	100	\$411,257,125	6.4466	\$61,163	\$59,188	\$1,976
Municipality of North Perth	98	\$1,277,876,377	20.0310	\$190,046	\$184,354	\$5,692
Twp. of Perth East	9	\$106,013,266	1.6618	\$15,767	\$15,571	\$196
Municipality of South Bruce	1	\$4,434,119	0.0693	\$657	\$646	\$11
Twp. of Wellington North	16	\$178,458,779	2.7974	\$26,541	\$25,460	\$1,080
Municipality of West Perth	3	\$28,312,416	0.4438	\$4,211	\$4,220	-\$9
<b>Total</b>		<b>\$6,379,488,185</b>	<b>100</b>	<b>\$948,766</b>	<b>\$903,587</b>	<b>\$45,179</b>



**For further information please contact:**

Your MVCA Municipal Director or

Phil Beard

MVCA General Manager/Secretary-Treasurer

519 335-3557

pbeard@mvca.on.ca

**Maitland Valley Conservation Authority - Draft 2010 Operating Budget Summary December 10, 2010 - Table 1**

ITEM	TOTAL EXPEND	GENERAL REVENUE		NET COST	GRANTS		LEVIES		Deferred Revenue	Reserves	Est. Program Surplus/(Deficit)
		Revenue	Donations		Admin/Op.	Other	General	Special			
<b>Flood Safety Services</b>											
Flood Forecasting	84,852			84,852	39,298		42,426		3,128		(0)
Lake Huron Centre for Coastal Conservation	10,000			10,000			5,000	5,000			0
Development/Wetlands/Watercourses/Shoreline Reg Service	56,140	23,500		32,640			32,640				(0)
<b>Total</b>	<b>150,992</b>	<b>23,500</b>	<b>0</b>	<b>127,492</b>	<b>39,298</b>	<b>0</b>	<b>80,066</b>	<b>5,000</b>	<b>3,128</b>	<b>0</b>	<b>(0)</b>
<b>Watershed Stewardship Services</b>											
Planning Advisory Service	37,214	8,000		29,214	7,534		21,680				(0)
Watershed Monitoring and Reporting	81,573	16,950		64,623			64,623				0
Conservation Watercourse Management	17,882	17,882		-0							0
Maitland Watershed Partnerships	31,511			31,511			31,511				(0)
Rural Water Quality	74,429			74,429			71,429	3,000			(0)
Soil and Water Conservation Service	75,840			75,840			75,840				(0)
Reforestation Services	111,769	125,880		-14,111							14,111
Conservation Education Services	87,103	21,000	25,500	40,603			38,323			2,280	(0)
<b>Total</b>	<b>517,320</b>	<b>189,712</b>	<b>25,500</b>	<b>302,109</b>	<b>7,534</b>	<b>0</b>	<b>303,406</b>	<b>0</b>	<b>3,000</b>	<b>2,280</b>	<b>14,111</b>
<b>Conservation Areas Management Service</b>											
Falls Reserve Conservation Area	323,601	310,684	2,300	10,617		12,700				1,316	3,399
Wawanosh Park Conservation Area	21,715	12,300	700	8,715						8,715	0
Management, Development and Operations	116,855	8,365		108,490			108,490				(0)
Motor Pool	13,150	13,150		0							0
<b>Total</b>	<b>475,320</b>	<b>344,499</b>	<b>3,000</b>	<b>127,822</b>	<b>0</b>	<b>12,700</b>	<b>108,490</b>	<b>0</b>	<b>0</b>	<b>10,031</b>	<b>3,399</b>
<b>Corporate Services</b>											
Administration	197,924	31,059		166,865	11,015		155,850				0
Financial Management	92,265			92,265			92,265				0
Governance	18,100			18,100			18,100				0
Service Area Support	53,140			53,140			53,140				0
Communications and Foundation Support	82,451	1,000		81,451			81,451				0
Motor Pool	11,501	27,957		-16,456							16,456
<b>Total</b>	<b>455,380</b>	<b>60,016</b>	<b>0</b>	<b>395,364</b>	<b>11,015</b>	<b>0</b>	<b>400,808</b>	<b>0</b>	<b>0</b>	<b>0</b>	<b>16,457</b>
<b>TOTAL OPERATING BUDGET</b>	<b>1,599,013</b>	<b>617,727</b>	<b>28,500</b>	<b>952,788</b>	<b>57,847</b>	<b>12,700</b>	<b>892,768</b>	<b>5,000</b>	<b>6,128</b>	<b>12,311</b>	<b>33,966</b>

**Maitland Valley Conservation Authority - Draft 2010 Projects Budget Summary December 10, 2009 -Table 2**

ITEM	TOTAL EXPEND	GENERAL REVENUE		NET COST	GRANTS		LEVIES		Deferred Revenue	Reserves	Program Surplus/De
		Revenue	Donations		Admin/Op.	Other	General	Special			
<b>Flood Safety Services Projects</b>											
MNR Flood/Erosion Emergency (ice mgmt)	3,000			3,000	1,500			1,500			(0)
MNR Low Flow Monitoring	3,000			3,000		3,000					0
MNR Generic Regulation	31,856			31,856			31,856				0
Shoreline Regulation Working Group	9,445			9,445			5,750		3,695		0
Minto Rainfall Gauges	13,283			13,283	11,209			300	1,774		(0)
<b>Total</b>	<b>60,584</b>	<b>0</b>	<b>0</b>	<b>60,584</b>	<b>12,709</b>	<b>3,000</b>	<b>37,606</b>	<b>1,800</b>	<b>5,469</b>	<b>0</b>	<b>(0)</b>
<b>Watershed Stewardship Services Projects</b>											
Scott Drain Demonstration	5,740			5,740			1,250		4,490		0
Restoration Design Support	10,000			10,000						10,000	0
Demonstration Projects-Maintenance/Monitoring	8,483			8,483					8,483		(0)
Watershed Report Card	2,263			2,263					2,263		0
Shoreline Hydrology Project 2009 Carryover	5,841			5,841					20,790		14,949
Blyth Greenway Kiosk	770			770					770		0
Drinking Water Source Protection Planning	18,184	18,184		0							(0)
DWSP Capacity Building	8,309	8,309		0					0		0
DWSP Stewardship	2,000	2,000		0							(0)
Releaf the Maitland	29,235	29,235		0							0
Middle Maitland Rejuvenation	9,275			9,275					9,275		0
Huron Clean Water	250,000	250,000		(0)							0
MOE Nutrient Management	13,680			13,680		13,680					0
Wingham Fish Habitat	2,079			2,079					2,079		0
<b>Total</b>	<b>365,859</b>	<b>307,728</b>	<b>0</b>	<b>58,131</b>	<b>0</b>	<b>13,680</b>	<b>1,250</b>	<b>0</b>	<b>48,150</b>	<b>10,000</b>	<b>14,949</b>
<b>Management/Development/Operations Projects</b>											
Taylor Property - Project Tending	2,797			2,797						2,797	(0)
Forest Management	3,885			3,885						3,885	(0)
Bluevale Dam Refurbishing	26,034			26,034			7,096			18,938	(0)
<b>Total</b>	<b>32,717</b>	<b>0</b>	<b>0</b>	<b>32,717</b>	<b>0</b>	<b>0</b>	<b>7,096</b>	<b>0</b>	<b>0</b>	<b>25,620</b>	<b>0</b>
<b>Corporate Projects</b>											
Administration Centre Boardroom Refurbishing	4,500			4,500						4,500	0
Watershed Conservation Fund Feasibility	4,500			4,500			4,500				0
Corporate Vehicle Replacement	23,500	2,500		21,000						21,000	0
MCF Capacity Building	21,452	15,904		5,548			5,548				0
Solar Energy Project	75,000			75,000						75,000	0
<b>Total</b>	<b>128,952</b>	<b>18,404</b>	<b>0</b>	<b>110,548</b>	<b>0</b>	<b>0</b>	<b>10,048</b>	<b>0</b>	<b>0</b>	<b>100,500</b>	<b>0</b>
<b>TOTAL PROJECTS BUDGET</b>	<b>588,112</b>	<b>326,132</b>	<b>0</b>	<b>261,980</b>	<b>12,709</b>	<b>16,680</b>	<b>56,000</b>	<b>1,800</b>	<b>53,619</b>	<b>136,120</b>	<b>14,949</b>



January 18, 2010.

**BY COURIER**

Ms. Lorraine Heinbuch,  
CAO/Clerk,  
Township of Wellington North,  
7490 Side Road 7W, Box 125,  
Kenilworth, ON N0G 2E0

**RECEIVED**

**JAN 19 2010**

Dear Ms. Heinbuch:

**TWP. OF WELLINGTON NORTH**

**Re: 2010 Budget and Levy Meeting**

Please be advised that the Annual General Meeting of the Grand River Conservation Authority will be held on Friday, February 26, 2010, at 9:30 a.m. at the Administration Centre in Cambridge, to consider the 2010 Budget and General Municipal Levy.

In preparation for that meeting, a Preliminary Budget (copy enclosed) was reviewed by the General Members on January 14, 2010. The Preliminary Budget includes a General Levy of \$9,293,000 which represents a 7.93% increase over 2009. The Levy, if approved, will be apportioned to watershed municipalities on the basis of "Modified Current Value Assessment" as outlined in Ontario Regulation 670/2000. The Preliminary Budget outlines the programs and services of the Grand River Conservation Authority and how those programs are expected to be funded in 2010. Also enclosed is a calculation of the apportionment of the General Levy to participating municipalities.

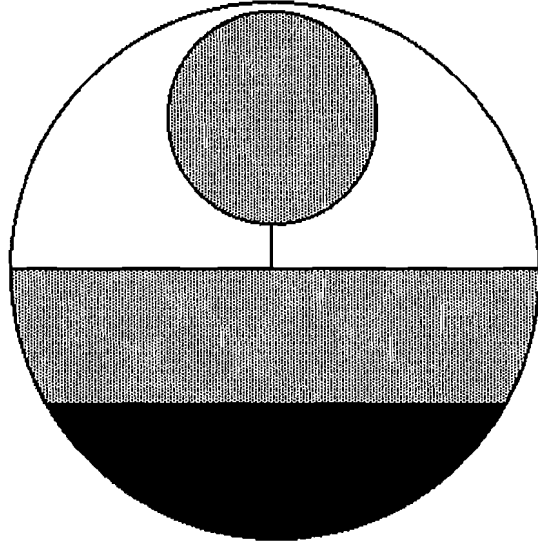
Each year, the Grand River Conservation Authority budget process begins with a five year forecast that includes programs to address the current and future needs of its municipal partners. During recent months, the General Members carefully reviewed the five year forecast and four drafts of the 2010 Budget. The Levy requirement that is included in this Preliminary 2010 Budget will allow the "base" programs that were in place in 2009 to continue, as well as provide for water-related capital expenditures to take place, with matching grants from the Province of Ontario. The Preliminary Budget also allows for the continuation of Source Protection Planning work, which is fully funded by Provincial grants.

Should you have any questions concerning the Preliminary Budget or the process for establishing Levy, please contact the undersigned.

Yours truly,

Keith Murch,  
Assistant Chief Administrative Officer  
and Secretary-Treasurer,  
Grand River Conservation Authority.

encls.



**Grand River Conservation Authority**

# **Preliminary 2010 Budget**

January 14th, 2010

# Grand River Conservation Authority 2010 Budget

## Index

<u>Section</u>	<u>Page</u>
GRCA 2010 Budget Highlights	1
Graphs:	
1) <i>Expenditures by Program</i>	4
2) <i>Revenues by Source</i>	5
3) <i>Per Capita General Levy, 1994 -2010</i>	6
Statement of Operations	7
Schedules and Explanations:	
1a) <i>Watershed Management and Monitoring</i>	8
1b) <i>Source Protection Program</i>	13
2) <i>Environmental Advisory Services</i>	15
3) <i>Watershed Stewardship</i>	17
4) <i>Conservation Land Management</i>	19
5) <i>Recreation and Education</i>	21
6) <i>Corporate Services</i>	23
7) <i>Vehicle, Equipment and Information Systems Usage Charges</i>	25
8) <i>Miscellaneous Expenditures and Revenues</i>	28
Levies:	
1) <i>Summary of Municipal Levy (General Levy)</i>	30
2) <i>Recommended Special Municipal Levies</i>	31

## GRCA 2010 Budget Highlights

For over 75 years, the Grand River Conservation Authority has been a successful partnership of municipalities, working together to promote and undertake wise management of the resources of the Grand River watershed.

The Grand River stretches 300 kilometres from Dundalk in Dufferin County to Port Maitland on Lake Erie. It takes in one of the fastest growing regions in the province, with a population of more than 950,000. The Grand River watershed is also home to some of the most intensively farmed land in the nation.

The prospect of high growth and the impact on natural resources and the quality of life present an enormous challenge to the GRCA, municipalities and all watershed residents. It creates an urgent need to work co-operatively to care wisely for the Grand River and its resources.

The work of the GRCA is divided into seven business areas:

- Improving water quality
- Protecting natural areas and biodiversity
- Maintaining reliable water supply
- Reducing flood damages
- Watershed planning
- Environmental education
- Outdoor recreation

In order to carry out these functions, the GRCA draws revenues from a variety of sources:

- User fees, such as park admissions, nature centre programs, planning fees and others which are set to offset most, if not all, the cost of these services
- Revenues from property rentals and hydro generation at our dams
- Municipal levies, which are applied primarily to watershed management programs
- Municipal grants dedicated to specific programs, such as the Rural Water Quality Program and Water Quality Monitoring
- Provincial transfer payments for water management operating expenses
- Provincial grants for specific purposes, such as studies on Source Water Protection and Capital Projects related to water management
- Donations from the Grand River Conservation Foundation for programs such as outdoor education, tree nursery operations and various special projects
- Federal grants and other miscellaneous sources of revenue

Of particular note in 2010 is the work that is continuing related to the development of a "Drinking Water Source Protection" plan for the Lake Erie Source Protection Region. Also of great importance, and complementary to Source Protection Planning, is the need to update the Grand River Basin Water Management Study. The original study was completed in 1982 and addressed the preferred methods to tackle watershed-wide issues such as flood damages, water quality and water supply. The update will look at the needs of watershed communities for the next 25 years and take into account the pressing issues raised by rapid population growth, farm intensification and climate change. The Dundas Valley groundwater study is expected to be completed in 2010. The major capital project scheduled for 2010 is the completion of the Conestogo Dam stilling basin upgrade.



## **1. Watershed Management and Monitoring**

Watershed management and monitoring programs protect watershed residents from flooding and provide the information required to develop appropriate resource management strategies and to identify priority actions to maintain a healthy watershed.

Activities include operation of flood and erosion control structures such as dykes and dams; flood forecasting and warning; water quality monitoring; restoration and rehabilitation projects; water quantity assessment; watershed and subwatershed studies, and administration of conservation authority regulations related to development in the floodplain and other natural hazards, wetland, slopes, shorelines and watercourses.

In 2009 the activities include research and studies that will be used in the development of a source protection plan for the Grand River watershed and work will continue on the components necessary to update the Grand River Water Management Plan.

**Expenditures:** \$12,025,100 (includes \$4,070,400 for Source Protection Program – Schedule 1(b))  
**Revenues:** \$11,458,100 (includes \$4,070,400 provincial funding for Source Protection Program)  
**Revenue sources:** Municipal levies, provincial grants, permit and other user fees.

## **2. Environmental Advisory Services**

This program involves planning and technical review of municipal planning documents and recommending environmental policies for floodplains, wetlands and other environmentally significant areas; providing advice and information to municipal councils on development proposals and severances; review of environmental assessments; and providing outside consulting services on a fee-for-service basis to other conservation authorities, agencies and other countries.

**Expenditures:** \$783,400  
**Revenues:** \$783,400  
**Revenue sources:** User fees, provincial grants, municipal levy

## **3. Watershed stewardship**

The watershed stewardship program includes those activities associated with providing service and/or assistance to private and public landowners and community groups on sound environmental practices that will enhance, restore or protect their properties. Some activities are reforestation through the Burford Tree Nursery and tree planting programs; the Rural Water Quality Program; implementing projects under the Grand River Fisheries Management Plan; providing conservation information through brochures, publications, the web site and media contacts.

**Expenditures:** \$2,997,700  
**Revenues:** \$2,996,700  
**Revenue sources:** Municipal levies and grants, provincial grants, tree sales, landowner contributions and donations from the Grand River Conservation Foundation.

#### **4. Conservation Land Management**

This includes expenses and revenues associated with the acquisition and management of land owned or managed by the GRCA including woodlots, provincially significant wetlands (e.g. Luther Marsh, Dunnville Marsh), passive conservation areas, rail-trails and a number of rental properties. Activities include forest management, woodlot thinning, hydro generation at our dams, and restoration of GRCA property where gravel has been extracted.

**Expenditures:** \$4,104,200  
**Revenues:** \$3,601,400

**Revenue sources:** Property rentals, hydro production, timber sales, conservation land income, land sales, donations from the Grand River Conservation Foundation

#### **5. Recreation and education**

**Recreation:** This includes the costs and revenues associated with operating the GRCA's 11 active conservation areas. The GRCA offers camping, hiking, fishing, swimming, skiing and other activities at its parks. It provides 2,500 campsites, making it the second-largest provider of camping accommodation in Ontario. About 1 million people visit GRCA parks each year. The parks are financially self-sufficient in their operating costs.

**Education:** The GRCA operates six nature centres, which provide curriculum-based programs to about 40,000 students from six school boards and independent schools throughout the watershed. In addition, about 16,000 members of the public attend day camps and weekend family events. The majority of the funding comes from school boards and the Grand River Conservation Foundation.

**Expenditures:** \$8,622,900  
**Revenues:** \$8,384,500

**Revenue sources:** Conservation Area user fees, nature centre user fees, community event fees, donations from the Grand River Conservation Foundation and Municipal General Levy (education programs only).

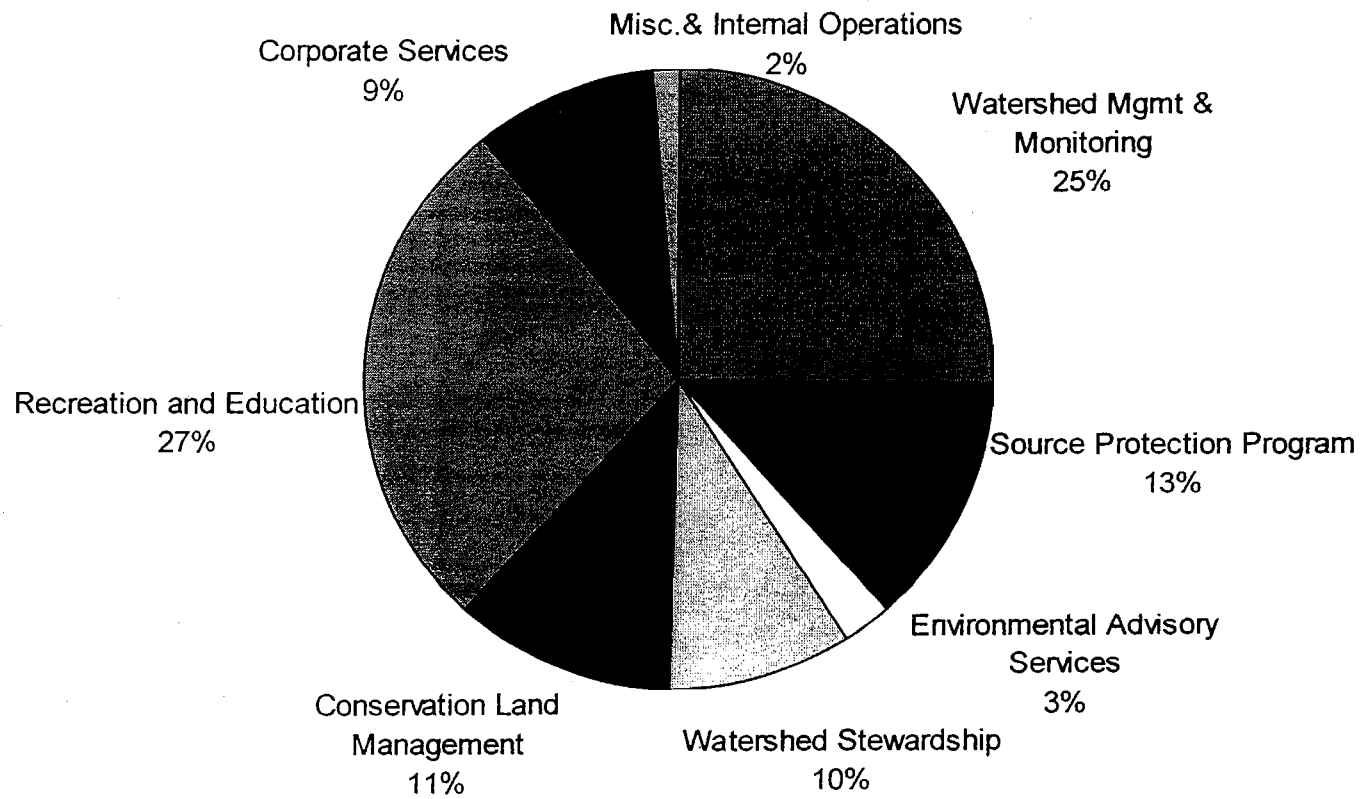
#### **6. Corporate services**

This includes the cost of head office functions such as accounting and human resources, as well as the cost of facilities, insurance, consulting and legal fees and expenses relating to the General Membership.

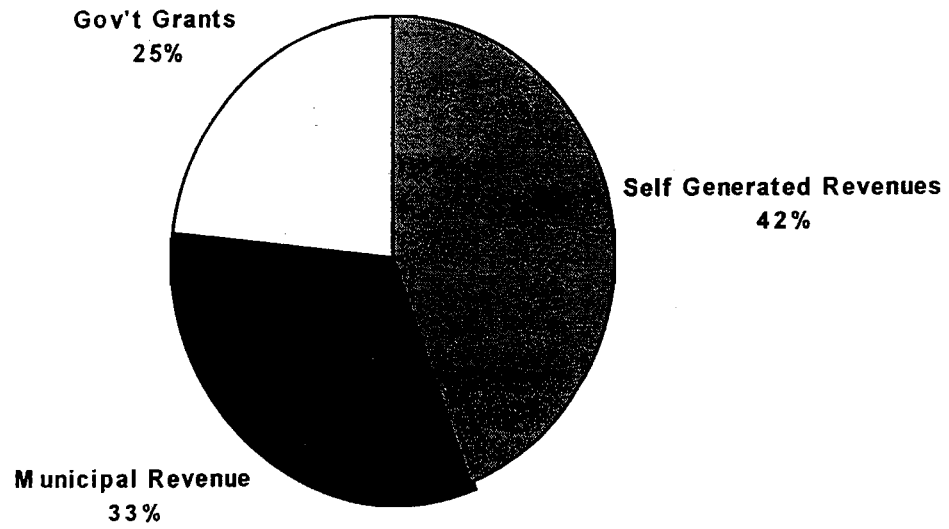
**Expenditures:** \$3,043,422  
**Revenues:** \$2,048,548

**Revenue sources:** Municipal levies and provincial grants

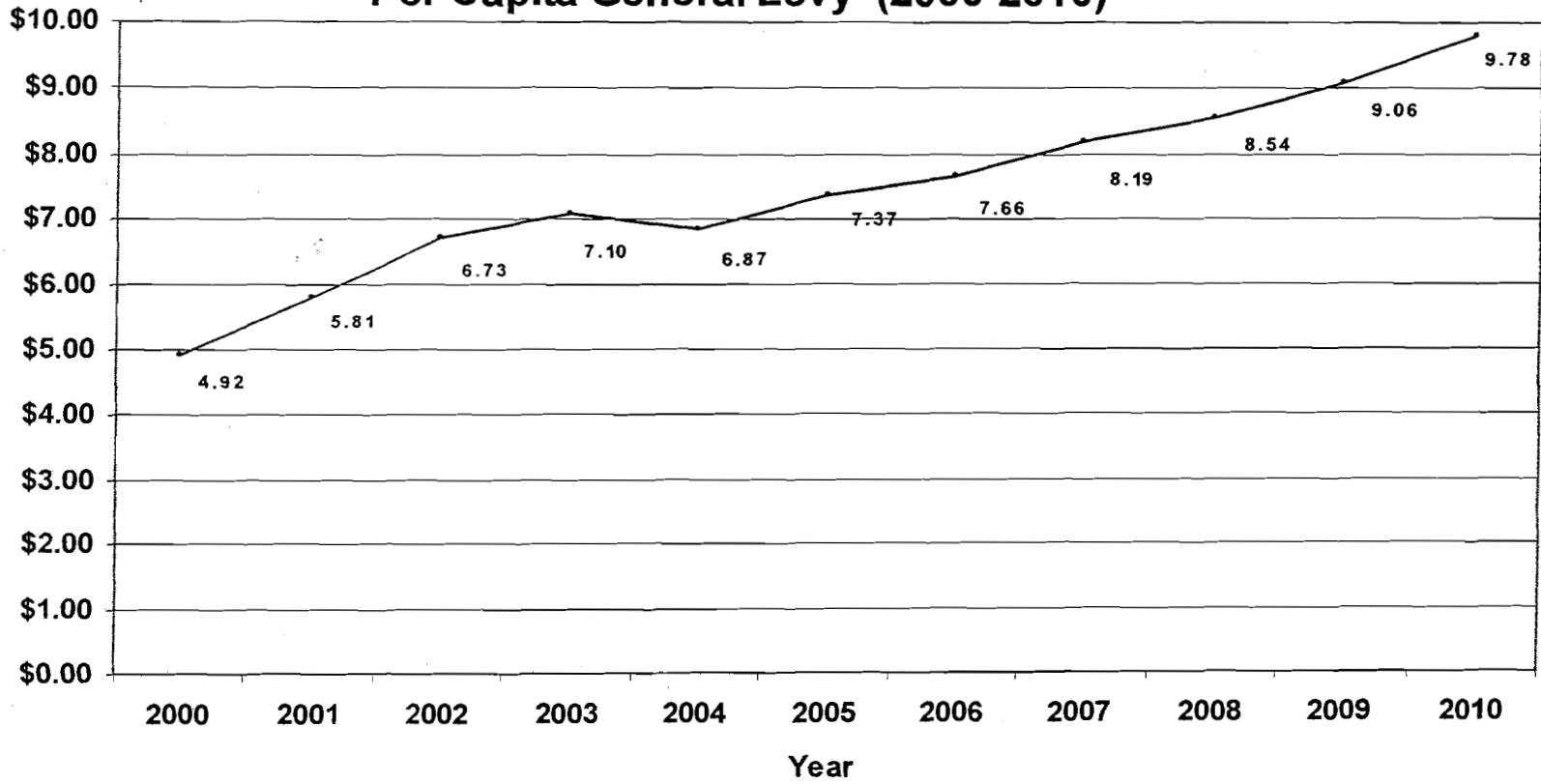
# Grand River Conservation Authority Expenditures by Program 2010 Budget



**Grand River Conservation Authority  
Revenues by Source  
2010 Budget**



### Grand River Conservation Authority Per Capita General Levy (2000-2010)



**Grand River Conservation Authority  
Statement of Operations  
BUDGET 2010**

	<u>Schedule</u>	<u>Actual 2007</u>	<u>Actual 2008</u>	<u>Budget 2009</u>	<u>Budget 2010</u>
<b>Revenue</b>					
<b>Municipal</b>					
Levies:		7.02%	7.00%	6.20%	4.97%
General-Operating	Various	6,785,000	7,280,000	7,710,000	8,093,000
General-Capital		795,000	850,000	900,000	1,200,000
Special	Various	70,475	27,619	120,000	150,000
Other	Various	818,286	813,530	749,300	700,000
<b>Total Municipal Revenue</b>		<b>8,468,761</b>	<b>8,951,149</b>	<b>9,479,300</b>	<b>10,143,000</b>
<b>Government Grants</b>					
MNR Transfer Payments	Various	951,547	951,547	951,547	951,547
Source Protection Program Provincial	1B	1,562,970	4,795,480	5,193,000	4,070,400
Other Provincial	Various	865,622	847,792	1,235,000	1,998,000
Federal	Various	146,610	89,110	86,500	730,500
<b>Total Government Grants</b>		<b>3,526,749</b>	<b>6,683,929</b>	<b>7,466,047</b>	<b>7,750,447</b>
<b>Self-Generated</b>					
<b>User Fees and Sales:</b>					
Enquiry's and Permits	1(a)	229,198	255,081	275,000	280,000
Plan Input and Review	2	405,923	386,038	375,000	400,000
Nursery and Woodlot Management	3/4	347,537	432,329	388,000	442,500
Consulting	2	70,088	6,656	10,000	10,000
Conservation Lands Income	4	82,340	78,475	81,000	71,000
Conservation Areas User Fees	5	5,720,740	5,538,610	5,751,500	6,000,000
Nature Centres and Camps	5	652,898	685,977	707,500	692,500
Merchandising and Sales	5	4,171	3,977	5,000	5,000
Property Rentals	4	1,808,252	2,834,731	2,792,760	2,898,999
Hydro Generation	4	186,454	325,803	450,000	450,000
Land Sales	4	519,364	1,343	600,000	450,000
Grand River Conservation Foundation	Various	409,156	477,430	532,000	226,000
Donations	Various	145,254	288,339	238,000	128,000
Landowner Contributions	3	110,057	195,876	133,000	183,000
Investment Income (Operating)	8	112,193	113,261	100,000	100,000
Investment Income (allocated to reserves)	8	425,980	405,392	400,000	400,000
Miscellaneous Income	Various	194,221	137,193	167,000	167,000
<b>Total Self Generated Revenue</b>		<b>11,423,826</b>	<b>12,166,511</b>	<b>13,003,760</b>	<b>12,903,999</b>
<b>Total Revenue</b>		<b>23,419,336</b>	<b>27,801,589</b>	<b>29,949,107</b>	<b>30,797,446</b>
<b>Expenditures</b>					
<b>OPERATING</b>					
Watershed Management & Monitoring	1(a)	4,275,063	4,847,144	5,345,450	5,163,700
Source Protection Program	1(b)	1,562,970	4,795,480	5,193,000	4,070,400
Environmental Advisory Services	2	677,795	607,921	755,000	783,400
Watershed Stewardship	3	2,677,907	2,784,640	3,110,300	2,997,700
Conservation Land Management	4	3,366,241	4,096,801	3,842,500	3,183,400
Recreation and Education	5	5,176,622	5,398,836	5,292,000	5,441,000
Corporate Services	6	2,241,672	2,341,124	2,612,236	2,559,697
Net Equipment/Information Systems Usage Charges	7	1,397,132	1,582,457	1,785,700	1,851,100
less: Internal Charges (IT & Motor Pool)		(1,397,132)	(1,582,457)	(1,785,700)	(1,851,100)
Miscellaneous Expense	8	195,030	150,551	192,000	192,000
<b>TOTAL OPERATING</b>		<b>20,173,300</b>	<b>25,022,497</b>	<b>26,342,486</b>	<b>24,391,297</b>
Flood Control Structures	1(a)	834,995	665,553	1,900,000	2,500,000
Flood Forecasting & Warning Equipment	1(a)	127,713	177,238	341,000	181,000
Water Quality Equipment	1(a)	123,092	95,783	250,000	110,000
Conservation Land Management-Land Purchases	4	409,148	701,457	300,000	300,000
Conservation Land Management-Trails	4	9,736	6,008	80,000	0
Conservation Land Management-Property Development	4	13,977	69,878	50,000	50,000
Conservation Land Management-Misc	4	66,988	49,572	268,000	68,000
Recreation and Education-Conservation Areas	5	1,094,689	1,047,918	1,135,100	3,018,900
Recreation and Education-Conservation Areas & Forestry	5	222,708	207,475	187,000	163,000
Corporate Services-Equipment	6	178,770	220,189	320,000	340,000
Information Systems-Capital	7	285,254	248,757	300,000	250,000
Motor Pool-Capital	7	380,625	291,828	315,000	375,000
less: Internal Charges (IT & Motor Pool)	7	(604,974)	(475,823)	(351,450)	(345,240)
Miscellaneous Expense	8				
<b>TOTAL CAPITAL</b>		<b>3,142,721</b>	<b>3,305,833</b>	<b>5,094,650</b>	<b>7,010,660</b>
<b>Total Expenditures</b>		<b>23,316,021</b>	<b>28,328,330</b>	<b>31,437,136</b>	<b>31,401,957</b>
Gross Surplus (Deficit)		103,315	(526,741)	(1,488,029)	(604,510)
Prior Year Surplus Carried Forward		131,859	378,043	333,729	
Funding (to)/from Reserves		142,869	482,427	1,154,300	604,510
<b>Net Surplus (Deficit)</b>		<b>378,043</b>	<b>333,729</b>	<b>(0)</b>	<b>(0)</b>

## **1(a). WATERSHED MANAGEMENT AND MONITORING**

Watershed management and monitoring programs provide the information required to develop appropriate resource management strategies and to identify priority actions to maintain a healthy watershed.

### **1-1. Watershed Studies**

This category includes watershed and subwatershed studies. These studies provide the strategic framework for understanding water resources and ecosystem form, functions and linkages. These allow for assessment of the impacts of changes in watershed resources and land use. Watershed studies also identify activities and actions that are needed to minimize the adverse impacts of change. This program supports other plans and programs that promote healthy watersheds.

#### *What do we do?*

- facilitate the update of the Watershed Water Management Plan in consultation with our partners including municipalities, provincial ministries, federal government, community, Six Nations and academia to address the key water management objectives: reduce flood damagers, improve water quality and ensure adequate water supply; document information gaps of our understanding of how the watershed functions and the important water processes occurring in the watershed and with consideration to climate change and population growth; implement early actions to achieve water management objectives.
- carry out or partner with municipalities and other stakeholders on integrated subwatershed plans for streams and tributaries

### **1-2. Resource Inventory and Environmental Monitoring**

This category includes the collection and analysis of environmental data and the development of management plans for protection and management of water resources and natural heritage systems. These programs help determine improvements or declines in watershed health and priority management areas.

#### *What do we do?*

- operate 8 continuous river water quality monitoring stations, 73 stream flow monitoring stations, 27 groundwater monitoring stations, and 37 water quality monitoring stations in conjunction with MOE, apply state-of-the-art water quality assimilation model to determine optimum sewage treatment options in the central Grand, and provide technical input to municipal water quality issues
- coordinate the development of a drinking water source protection plan
- develop and implement long term Fisheries and Forest Management Plans for the Grand River watershed
- analyze and report on water quality conditions in the Grand River watershed

- carry out restoration and rehabilitation projects including prairie enhancement, municipal “greening” projects and stream rehabilitation (see Watershed Stewardship)
- maintain a water budget to support sustainable water use in the watershed, and maintain a drought response program
- analyze water use data for the watershed and provide recommendations for water conservation approaches
- provide advice to Provincial Ministries regarding water use permits to ensure that significant environmental concerns are identified so that potential impacts can be addressed.

### **1-3. Flood Protection Services**

The flood protection services program provides watershed residents with an effective and efficient system that will reduce their exposure to the threat of flood damage and loss of life. It is estimated that the existing flood protection in the Grand River watershed saves an average of over \$5.0 million annually in property damage.

#### **1-3(a). Flood Forecasting and Warning**

The flood warning system includes the direct costs associated with monitoring the streams, and rivers in order to effectively provide warnings and guidance to municipalities and watershed residents during flood emergencies.

##### *What do we do?*

- maintain a ‘state of the art’ computerized flood forecasting and warning system.
- operate a 24 hour, year-round, on-call duty officer system to respond to flooding matters.
- collect and manage data on rainfall, water quantity, reservoir conditions, water levels from 56 streamflow gauges, 22 rainfall gauges, and 12 snow courses.
- use data radio and Voice Alert system continuously, monitor river conditions and detect warning levels, assist municipalities with emergency planning, and respond to thousands of inquiries each year.

#### **1-3(b). Flood and Erosion Control Structures**

This category includes costs associated with the capital and maintenance of structures, the primary purpose of which is to provide protection to life and property. These structures include dams, dykes, berms and channels etc. Also included in this category are non-flood control dams and weirs, which maintain upstream water levels.



***What do we do?***

- operate and maintain 7 major multi-purpose reservoirs, which provide flood protection and flow augmentation, and 25 kilometres of dykes in 4 major dyke systems
- ensure structural integrity of flood protection infrastructure through dam safety reviews, inspections and monitoring, reconstruction of deteriorating sections of floodwalls and refurbishing of major components of dams
- carry out capital upgrades to the flood control structures in order to meet Provincial standards
- operate and maintain 22 non-flood control dams, which are primarily for aesthetic, recreational, or municipal water supply intake purposes
- develop and implement plans to decommission failing or obsolete dams
- ice management activities to prevent or respond to flooding resulting from ice jams
- develop and implement public safety plans for structures

**1-3(c). Floodplain Regulations**

This category includes costs and revenues associated with administering the *Development, Interference with Wetlands and Alterations to Shorelines and Watercourses Regulation* made under the *Conservation Authorities Act*. This includes permit review, inspections, permit issuance, enforcement and follow-up, which may include defending appeals.

***What do we do?***

- Process over 600 permits each year related to development, alteration or activities that may interfere with the following types of lands:
  - ravines, valleys, steep slopes
  - wetlands including swamps, marshes, bogs, and fens
  - any river, creek, floodplain or valley land
  - the Lake Erie shoreline
- The regulation applies to the development activities listed below in the areas listed above:
  - the construction, reconstruction, erection or placing of a building or structure of any kind,
  - any change to a building or structure that would have the effect of altering the use or potential use of the building or structure, increasing the size of the building or structure or increasing the number of dwelling units in the building or structure
  - site grading
  - the temporary or permanent placing, dumping or removal of any material originating on the site or elsewhere.

- develop policies and guidelines to assist in the protection of sensitive environmental lands (i.e. Policies for the Administration of the Development, Interference with Wetlands and Alterations to Shorelines and Watercourses Regulation)
- develop enforcement and compliance policies and procedures for the Development, Interference with Wetlands and Alterations to Shorelines and Watercourses Regulation
- update and maintain flood line mapping; develop natural hazards mapping in digital format to be integrated into municipal planning documents and Geographic Information Systems

**Grand River Conservation Authority  
Schedule 1(a)- Watershed Management & Monitoring  
BUDGET 2010**

	<u>Actual 2007</u>	<u>Actual 2008</u>	<u>Budget 2009</u>	<u>Budget 2010</u>
<b>Expenditures</b>				
Watershed Studies	440,394	425,812	591,000	411,000
Resource Inventory & Environmental Monitoring	1,271,679	1,579,538	1,707,750	1,482,550
Flood Forecasting & Warning	739,554	835,795	997,000	867,400
Flood & Erosion Control Structures	2,029,521	1,972,064	3,368,000	3,996,700
Ice Management	0	0	5,000	5,000
Floodplain Regulations	614,114	718,751	887,600	902,250
Resource Management Division Support Costs	265,601	253,758	280,100	289,800
<b>Total Expenditures</b>	<b>5,360,863</b>	<b>5,785,718</b>	<b>7,836,450</b>	<b>7,954,700</b>
<b>Revenue</b>				
Municipal				
<i>General Levies</i>	3,992,233	4,281,983	4,482,283	4,907,333
<i>Special Levies</i>	70,475	27,619	120,000	150,000
<i>Other</i>	48,668	209,112	49,300	0
Government Grants				
<i>MNR Transfer Payments</i>	799,867	799,867	799,867	799,867
<i>Other Provincial:</i>	616,761	628,289	1,215,000	1,202,500
<i>Federal</i>	850	0	0	0
Self-Generated				
<i>Inquiries &amp; Permit Fees</i>	229,198	255,081	275,000	280,000
<i>Grand River Conservation Foundation</i>	20,588	24,679	25,000	25,000
<i>Fee Revenue</i>				
<i>Legal Settlements</i>				
<i>Donations</i>	38,015	30,354	23,000	23,000
<b>Total Revenue</b>	<b>5,816,655</b>	<b>6,256,984</b>	<b>6,989,450</b>	<b>7,387,700</b>
Gross Surplus (Deficit)	455,792	471,266	(847,000)	(567,000)
Funding from Reserves	9,642	4,758	847,000	567,000
Funding (to) Reserves	(200,000)	(305,000)	0	0
<b>Net Surplus (Deficit)</b>	<b>265,434</b>	<b>171,024</b>	<b>(0)</b>	<b>(0)</b>

**1(b). SOURCE PROTECTION PROGRAM**

Work is continuing related to the development of a "Drinking Water Source Protection" plan for the Lake Erie Source Protection Region (includes Grand River Conservation authority, Kettle Creek Conservation Authority, Long Point Conservation Authority and Catfish Conservation Authority). This work is being done to implement recommendations of the Walkerton Inquiry and will be a major focus by the GRCA for several years. The provincial government has provided special grants to fully support studies and research that will become the foundation of this plan.

***What do we do?***

- Act as the lead Conservation Authority in the Lake Erie Source Protection Region and provide administrative and technical support to the Long Point Region, Catfish Creek, and Kettle Creek Conservation Authorities in the facilitation of drinking water source protection planning in their watershed areas.
- Provide administrative and technical support for the Source Protection Committee, a multi-stakeholder committee that is responsible for directing the development of the four collaborative source protection plans in the Lake Erie Source Protection Region.
- Undertake water budget studies to understand and protect water resources from a water quantity prospective.
- Work with municipalities to carry out technical studies related to the risk assessment and protection of drinking water sources from a water quality prospective.
- Deliver the Clean Water Stewardship Fund program - a cost-share program with landowners in defined vulnerable areas near drinking water wells and intakes to take early action to reduce the risk to drinking water sources.

**Grand River Conservation Authority  
Schedule 1(b) - Source Protection Program  
BUDGET 2010**

	<u>Actual 2007</u>	<u>Actual 2008</u>	<u>Budget 2009</u>	<u>Budget 2010</u>
<b><u>Expenditures</u></b>				
Operating Costs	991,956	1,239,001	1,358,000	1,305,400
Water Budget - Technical Studies	401,548	3,210,929	1,120,000	600,000
Water Quality - Technical Studies	169,466	73,439	2,200,000	1,000,000
Stewardship Program	0	272,111	515,000	1,165,000
<b>Total Expenditures</b>	<b>1,562,970</b>	<b>4,795,480</b>	<b>5,193,000</b>	<b>4,070,400</b>
<b><u>Revenue</u></b>				
<b>Municipal:</b>				
General Levies				
Special Levies				
Other				
<b>Government Grants:</b>				
MNR Transfer Payments	0	0	0	0
Source Protection Program Provincial	1,562,970	4,795,480	5,193,000	4,070,400
<b>Self-Generated:</b>				
<b>Total Revenue</b>	<b>1,562,970</b>	<b>4,795,480</b>	<b>5,193,000</b>	<b>4,070,400</b>
Gross Surplus (Deficit)	0	0	0	0
Funding from Reserves	0	0	0	0
Funding (to) Reserves	0	0	0	0
<b>Net Surplus (Deficit)</b>	<b>0</b>	<b>0</b>	<b>0</b>	<b>0</b>

## **2. ENVIRONMENTAL ADVISORY SERVICES**

This program includes costs and revenues associated with reviewing Official Plans, Zoning Bylaws, Development Plans and other planning proposals, in accordance with Conservation Authority and provincial or municipal agreements. It also includes watershed management consulting outside of the Grand River watershed, which is done from time-to-time on a fee-for-service basis.

### **2.1 Municipal Plan Input and Review**

#### *What do we do?*

- review municipal planning documents and recommend environmental policies and designations for floodplains, wetlands, natural heritage areas, fisheries habitat, hazard lands and shorelines, which support GRCA regulations and complement provincial polices and federal regulations
- provide advice to municipalities regarding development proposals to ensure that all environmental concerns are adequately identified and that any adverse impacts are minimized or mitigated
- provide information and technical advice to Municipal Councils and Land Division Committees to assist in making wise land use decisions regarding protection of wetlands, fish and wildlife habitat and natural heritage systems

### **2-2. Environmental Consulting**

This category includes the costs and revenues associated with consulting to agencies outside the Grand River watershed, including international projects where our expertise is contracted. Generally, international projects are co-ordinated by the federal or provincial government, and we are part of a larger team assisting countries experiencing flooding or watershed management problems.

**Grand River Conservation Authority  
Schedule 2 - Environmental Advisory Services  
BUDGET 2010**

	<u>Actual 2007</u>	<u>Actual 2008</u>	<u>Budget 2009</u>	<u>Budget 2010</u>
<b><u>Expenditures</u></b>				
Municipal Plan Input & Review	587,240	599,557	745,000	773,400
Other	0	0	0	0
Environmental Consulting	90,555	8,364	10,000	10,000
<b>Total Expenditures</b>	<b>677,795</b>	<b>607,921</b>	<b>755,000</b>	<b>783,400</b>
<b><u>Revenue</u></b>				
<b>Municipal:</b>				
General Levies	149,520	176,820	288,320	291,720
Special Levies				
Other				
<b>Government Grants:</b>				
MNR Transfer Payments	81,680	81,680	81,680	81,680
Other Provincial	19,999	1,708	0	0
Federal	0	0	0	0
<b>Self-Generated:</b>				
Consulting	70,088	6,656	10,000	10,000
Plan Input and Review	405,923	386,038	375,000	400,000
<b>Total Revenue</b>	<b>727,210</b>	<b>652,902</b>	<b>755,000</b>	<b>783,400</b>
Gross Surplus (Deficit)	49,415	44,981	0	0
Funding from Reserves	0	0	0	0
Funding (to) Reserves	0	0	0	0
<b>Net Surplus (Deficit)</b>	<b>49,415</b>	<b>44,981</b>	<b>0</b>	<b>0</b>

### **3. WATERSHED STEWARDSHIP**

The watershed stewardship program includes those activities associated with providing service and/or assistance to private and public landowners and community groups on sound environmental practices that will enhance, restore or protect their properties.

#### **3-1. Land Stewardship**

This category includes direct delivery of remediation programs such as fisheries rehabilitation, tree planting/reforestation, wildlife habitat, developing property management plans, agricultural best management practices and erosion control on municipally or privately owned lands.

##### *What do we do?*

- plant trees on private lands (cost recovery from landowner)
- operate Burford Tree Nursery to grow and supply native and threatened species
- carry out tree planting and other forest management programs and other restoration initiatives e.g. species at risk and ecological monitoring on GRCA lands, and prescribed burn activities on over 7,000 hectares of managed forests on GRCA owned lands
- co-ordinate the Rural Water Quality Program. This involves landowner contact, promotion/education and providing grants to assist farmers with capital improvements to address manure containment, livestock fencing, soil conservation, and other rural non-point sources of river water pollution. Funding for this important initiative comes from watershed municipalities and other government grants.
- implement “best bets” for protection and enhancement of fisheries, as determined by the Grand River Fisheries Management Plan; work with outside agencies, non-government organizations and the public to improve fish habitat through stream rehabilitation projects including the implementation of the recommendations of the watershed studies

#### **3-2. Conservation Information**

This category includes watershed-wide communication and promotion of conservation issues to watershed residents, municipalities and other agencies.

##### *What do we do?*

- prepare and distribute brochures and publications; maintain displays and the website
- respond to media inquiries and prepare media releases
- make presentations to municipal councils, private and public landowners, community groups, service clubs, and the general public



**Grand River Conservation Authority  
Schedule 3 - Watershed Stewardship  
BUDGET 2010**

	<u>Actual 2007</u>	<u>Actual 2008</u>	<u>Budget 2009</u>	<u>Budget 2010</u>
<b><u>Expenditures</u></b>				
<b>Land Stewardship:</b>				
Private Land Tree Planting	259,270	293,663	314,350	371,600
Forestry	489,950	750,240	696,300	586,800
Soil and Water Conservation	1,218,901	1,054,327	1,374,650	1,325,900
Stream Management & Restoration	198,655	166,097	126,400	131,000
	<b>2,166,776</b>	<b>2,264,327</b>	<b>2,511,700</b>	<b>2,415,300</b>
<b>Conservation Information:</b>				
Conservation Action Centre	0	0	0	0
Communications	511,131	520,313	598,600	582,400
	<b>511,131</b>	<b>520,313</b>	<b>598,600</b>	<b>582,400</b>
<b>Total Expenditures</b>	<b>2,677,907</b>	<b>2,784,640</b>	<b>3,110,300</b>	<b>2,997,700</b>
<b><u>Revenue</u></b>				
<b>Municipal</b>				
General Levies	1,322,550	1,404,800	1,542,800	1,491,200
Special Levies	0	0	0	0
Other:	769,618	602,418	700,000	700,000
<b>Government Grants</b>				
MNR Transfer Payments	0	0	0	0
Other Provincial	52,668	135,637	20,000	85,000
Federal:	49,184	27,850	66,500	0
<b>Self-Generated</b>				
Nursery	321,947	419,021	361,000	417,500
Landowner Contributions	110,057	195,876	133,000	183,000
Grand River Conservation Foundation	7,000	55,140	86,000	30,000
Donations	50,053	214,399	200,000	90,000
<b>Total Revenue</b>	<b>2,683,077</b>	<b>3,055,141</b>	<b>3,109,300</b>	<b>2,996,700</b>
Gross Surplus (Deficit)	5,170	270,501	(1,000)	(1,000)
Funding from Reserves	813	1,005	1,000	1,000
Funding (to) Reserves	(28,000)	(45,000)	0	0
<b>Net Surplus (Deficit)</b>	<b>(22,017)</b>	<b>226,506</b>	<b>0</b>	<b>0</b>

#### 4. CONSERVATION LAND MANAGEMENT

The Conservation Land Management Program includes all expenses and revenues associated with acquisition and management of land owned/managed by the Authority. This includes protection of *Provincially Significant Conservation Lands*, woodlot management, rental/lease agreements and other revenues generated from managing lands and facilities. These expenses do not include those associated with recreation and education programs on GRCA lands.

##### *What do we do?*

- acquire and manage significant wetlands and floodplain lands, e.g. the Luther Marsh Wildlife Management Area, the Keldon Source Area, the Bannister-Wrigley Complex, and the Dunnville Marsh
- operate “passive” conservation areas in order to conserve forests and wildlife habitat. Some are managed by municipalities or private organizations (Chicopee Ski Club in Kitchener, Scott Park in New Hamburg, etc.)
- develop and maintain extensive trail network on former rail lines owned by GRCA and municipalities (much of this is part of the Trans-Canada Trail network). Necessary funding is raised by The Grand River Conservation Foundation
- rent from tenants for seasonal use of 733 cottage lots at Belwood Lake and Conestogo Lake; hold leases on over 2000 hectares of agricultural land and 60 residential units, and over 50 other agreements for use of GRCA lands. Income from these rentals aids in the financing of other GRCA programs
- host controlled hunts at various locations including Luther Marsh Wildlife Management Area and Conestogo Lake
- carry out forestry disease control, woodlot thinning and selective harvesting on GRCA lands in accordance with the Forest Management Plan while generating income from sale of timber. Income generated helps pay for future forest management activities
- generate hydro from turbines in 3 large dams; the income is used to fund GRCA programs
- where appropriate, dispose of lands that have been declared surplus and continue to identify and plan for disposition of other surplus lands. Proceeds from future dispositions will be used for acquisition of “Provincially Significant Conservation Lands” and for other core programs

**Grand River Conservation Authority**  
**Schedule 4 - Conservation Land Management**  
**BUDGET 2010**

	<b>Actual 2007</b>	<b>Actual 2008</b>	<b>Budget 2009</b>	<b>Budget 2010</b>
<b><u>Expenditures</u></b>				
Operating Costs	593,650	506,645	507,100	518,800
Conservation Land Property Taxes	145,028	114,331	140,000	144,200
Op'ns Admin/Support Costs	571,308	576,895	586,700	587,800
Capital Expenditures	507,375	765,166	649,500	369,500
Capital Support Staff	382,026	403,375	431,100	447,500
Property Rentals	1,153,602	1,608,688	1,568,200	1,369,700
Woodlot Management	67,175	69,939	68,400	71,200
Hydro Production	445,926	878,677	589,500	92,700
Master Plans	0	0	0	0
<b>Total Expenditures</b>	<b>3,866,090</b>	<b>4,923,716</b>	<b>4,540,500</b>	<b>3,601,400</b>
<b><u>Revenue</u></b>				
Municipal:				
<i>General Levies</i>	145,000	149,000	140,000	144,200
<i>Special Levies</i>	0	0	0	0
<i>Other</i>	0	0	0	0
Government Grants:				
<i>MNR Transfer Payments</i>	0	0	0	0
<i>Other Provincial</i>	73,985	0	0	0
<i>Federal:</i>	55,151	25,000	0	0
Self Generated:				
<i>Conservation Lands Income</i>	82,340	78,475	81,000	71,000
<i>Property Rentals</i>	1,808,252	2,834,731	2,792,760	2,898,999
<i>Woodlot Management</i>	25,590	13,308	25,000	25,000
<i>Hydro Production</i>	186,454	325,803	450,000	450,000
<i>Gravel and Land Sales</i>	519,364	1,343	600,000	450,000
<i>Grand River Conservation Foundation</i>	67,434	105,644	350,000	50,000
<i>Other Donations</i>	27,856	12,247	15,000	15,000
<b>Total Revenue</b>	<b>2,991,426</b>	<b>3,545,551</b>	<b>4,453,760</b>	<b>4,104,199</b>
Gross Surplus (Deficit)	(874,664)	(1,378,165)	(86,740)	502,799
Funding from Reserves	1,858,974	1,686,946	1,121,000	401,000
Funding (to) Reserves	(645,479)	(129,339)	(738,750)	(588,750)
<b>Net Surplus (Deficit)</b>	<b>338,831</b>	<b>179,442</b>	<b>295,510</b>	<b>315,049</b>

## 5. RECREATION AND EDUCATION

These programs include costs and revenues associated with delivering recreational and educational programs on GRCA lands.

### **5-1. Conservation Areas**

This category includes the costs and revenues associated with day-use, concessions and camping at GRCA active Conservation Areas.

#### *What do we do?*

- operate 11 “active” Conservation Areas (8 camping and 3 exclusively day-use) that are enjoyed by over 1 million visitors annually. It is estimated that these visitors also help generate significant revenues for the local tourism industry
- offer camping, hiking, fishing, swimming, boating, picnicking, skiing and related facilities
- provide 2,500 campsites – second only to the provincial park system as a provider of camping accommodation in Ontario

### **5-2. Conservation Education**

This category includes costs and revenues associated with outdoor education facilities, which provide education and information about conservation, the environment and the Conservation Authority’s programs to 40,000 students in 6 school boards and 16,000 members of the general public annually. The majority of funding for this program comes from school boards, the Grand River Conservation Foundation and public program fees.

#### *What do we do?*

- operate 6 outdoor education centres under contract with watershed school boards, providing hands-on, curriculum-based, outdoor education (App’s Mills near Brantford, Taquanyah near Cayuga, Guelph Lake, Laurel Creek in Waterloo, Shade’s Mills in Cambridge and Rockwood)
- offer curriculum support materials and workshops to watershed school boards
- offer conservation day camps to watershed children and interpretive community programs to the public (user fees apply)

**Grand River Conservation Authority  
Schedule 5 - Recreation and Education  
BUDGET 2010**

	<u>Actual 2007</u>	<u>Actual 2008</u>	<u>Budget 2009</u>	<u>Budget 2010</u>
<b><u>Expenditures</u></b>				
Conservation Areas				
<i>Operating Expense</i>	4,104,064	4,232,518	4,325,000	4,489,000
<i>Property Taxes</i>	63,779	59,613	68,000	68,000
<i>Capital Expenditures</i>	1,317,397	1,255,393	1,322,100	3,181,900
	<b>5,485,240</b>	<b>5,547,524</b>	<b>5,715,100</b>	<b>7,738,900</b>
Conservation Education				
<i>School Programs</i>	835,351	924,948	740,000	725,000
<i>Community Programs</i>	54,690	62,442	54,000	54,000
<i>Resource Management Camps</i>	114,654	119,240	105,000	105,000
	<b>1,004,695</b>	<b>1,106,630</b>	<b>899,000</b>	<b>884,000</b>
Community Relations	4,084	75	0	0
<b>Total Expenditures</b>	<b>6,494,019</b>	<b>6,654,229</b>	<b>6,614,100</b>	<b>8,622,900</b>
<b><u>Revenue</u></b>				
Municipal				
<i>General Levies</i>	111,000	161,000	161,000	180,000
<i>Special Levies</i>	0	0	0	0
<i>Other</i>	0	0	0	0
Government Grants				
<i>MNR Transfer Payments</i>	0	0	0	0
<i>Other Provincial</i>	47,614	68,579	0	710,500
<i>Federal</i>	0	0	0	710,500
Self-Generated				
<i>Conservation Area User Fees</i>	5,720,740	5,538,610	5,751,500	6,000,000
<i>Conservation Education - Schools</i>	465,793	498,298	531,500	516,500
<i>Conservation Education - Community</i>	50,882	49,438	48,500	48,500
<i>Conservation Education - Camps</i>	136,223	138,241	127,500	127,500
<i>Community Relations</i>	4,171	3,977	5,000	5,000
<i>Donations</i>	318,140	269,859	36,000	86,000
<b>Total Revenue</b>	<b>6,854,563</b>	<b>6,728,002</b>	<b>6,661,000</b>	<b>8,384,500</b>
Gross Surplus (Deficit)	360,544	73,773	46,900	(238,400)
Funding from Reserves	0	4,312	100,000	484,000
Funding (to) Reserves	(339,500)	(154,500)	(154,500)	(154,500)
<b>Net Surplus (Deficit)</b>	<b>21,044</b>	<b>(76,415)</b>	<b>(7,600)</b>	<b>91,100</b>

## **6. CORPORATE SERVICES**

This category includes the cost of the Office of the Chief Administrative Officer and the Assistant Chief Administrative Officer/Secretary-Treasurer, the Finance Section (General Accounting, accounting for grant submissions, accounts payable, accounts receivable, payroll) and the Human Resources section, which administers personnel policy, health and safety, union contract and employee benefits. In addition, this category includes all expenses relating to the General Membership, the expenses of the Administration Centre facility, insurance, audit, consulting and legal fees and general expenses. A computer charge is allocated to the individual sections based on the number of users and the nature of system usage (see Schedule 7 - Vehicle, Equipment and Information Systems Usage Charges). A portion of General Administration expenses is eligible for Provincial Operating grants and matching levies.

**Grand River Conservation Authority**  
**Schedule 6 - Corporate Services**  
**BUDGET 2010**

<b><u>Expenditures</u></b>	<b><u>Actual</u></b> <b><u>2007</u></b>	<b><u>Actual</u></b> <b><u>2008</u></b>	<b><u>Budget</u></b> <b><u>2009</u></b>	<b><u>Budget</u></b> <b><u>2010</u></b>
General Administration				
<i>Salaries &amp; Benefits:</i>	1,266,052	1,315,504	1,413,300	1,469,000
<i>Travel Expenses &amp; Allowances:</i>	136,071	161,105	175,840	181,200
<i>Equipment Purchases and Rentals:</i>	187,572	196,767	234,250	239,650
<i>Materials and Supplies</i>	173,135	175,375	137,600	142,000
<i>Rent and Utilities</i>	547,766	582,858	655,900	681,000
<i>General Expenses</i>	252,852	302,682	459,071	330,572
<i>Recovery of Corporate Services Expenses</i>	(143,006)	(172,978)	(143,725)	(143,725)
<b>Total Expenditures</b>	<b>2,420,442</b>	<b>2,561,313</b>	<b>2,932,236</b>	<b>2,899,697</b>

**Revenue**

Municipal				
<i>General Levies</i>	1,859,697	1,936,397	1,995,597	1,978,548
<i>Special Levies</i>	0	0	0	0
<i>Other</i>	0	0	0	0
Government Grants				
<i>MNR Transfer Payments</i>	70,000	70,000	70,000	70,000
<i>Other Provincial</i>	0	0	0	0
<i>Federal</i>	0	0	0	0
Self-Generated	0	0	0	0
<b>Total Revenue</b>	<b>1,929,697</b>	<b>2,006,397</b>	<b>2,065,597</b>	<b>2,048,548</b>

Gross Surplus (Deficit)	(490,745)	(554,916)	(866,639)	(851,149)
Funding from Reserves	0	0	115,000	15,000
Funding (to) Reserves	(42,000)	(165,000)	0	0
<b>Net Surplus (Deficit)</b>	<b>(532,745)</b>	<b>(719,916)</b>	<b>(751,639)</b>	<b>(836,149)</b>

## 7. VEHICLE, EQUIPMENT AND INFORMATION SYSTEMS USAGE CHARGES

This category includes the two support areas that are charged out to other cost centres on an "as used" basis.

### 7-1. Information Systems

This category includes costs associated with implementing and operating corporate information technology for all areas including the Administration Centre, Conservation Areas and Nature Centres. All expenses and capital purchases are charged against the computer reserve. User cost centres incur a charge for their use which is booked as a "rental recovery" to sustain the computer reserve.

#### *What do we do?*

- Develop and implement the GRCA's long-term information technology and telecommunications plan. Create and maintain standards for the development and use of corporate data
- Operate a computer network of 24 servers and 200 clients for geographic information systems (GIS); flood forecasting and warning, including real-time data collection and dissemination of water quantity and quality monitoring station information; database and applications development; website hosting; electronic mail; internet access; personal computing applications; and administration systems, including finance and human resources
- Operate on-line campsite reservation and day-use systems with computers in 10 Conservation Areas. Provide computers for use at outdoor education centres
- Develop and operate a wide area network connecting 14 sites and campus style wireless point-to-multipoint networks at Head Office and Conservation Areas
- Develop and operate an integrated Voice over IP Telephone network covering nine sites and 220 handsets
- Support and manage mobile phones, blackberry devices, personal digital assistants and pagers
- Capital expenditures include Geomatics and database development; ongoing replacement of and upgrades to network servers, PCs, networking peripherals, telecommunication devices and software including the on-line campsite reservation system



## **7-2. Motor Pool**

Motor Pool includes the vehicles and equipment that are used for operations and capital projects by other cost centres. All operating expenses and capital purchases are funded from the motor pool reserve. When equipment or vehicles are used, the cost centre is charged for the use of the asset and the income is credited to the motor pool reserve.

### *What do we do?*

- operate a fleet of vehicles and equipment to support all GRCA programs in the field
- capital purchases in 2009 include five pickup trucks, one van, one utility cab and chassis, three utility vehicles (golf cart type units), one large mower and various pieces of small equipment (i.e. push mowers, chain saws).

**Grand River Conservation Authority**  
**Schedule 7 - Vehicle/Equipment/Information Systems**  
**BUDGET 2010**

	<u>Actual</u> <u>2007</u>	<u>Actual</u> <u>2008</u>	<u>Budget</u> <u>2009</u>	<u>Budget</u> <u>2010</u>
<b><u>Expenditures</u></b>				
<b>Information Systems</b>				
Operating Expenses	688,482	802,619	974,700	1,007,800
Capital Purchases	285,254	248,757	300,000	250,000
	<u>973,736</u>	<u>1,051,376</u>	<u>1,274,700</u>	<u>1,257,800</u>
<b>Motor Pool</b>				
Operating Expenses	708,650	779,838	811,000	843,300
Capital Purchases	380,625	291,828	315,000	375,000
	<u>1,089,275</u>	<u>1,071,666</u>	<u>1,126,000</u>	<u>1,218,300</u>
<b>Internal Charges to Programs</b>				
Information Systems	(959,900)	(976,000)	(1,069,650)	(1,096,740)
Motor Pool	(1,042,206)	(1,082,280)	(1,067,500)	(1,099,600)
	<u>(2,002,106)</u>	<u>(2,058,280)</u>	<u>(2,137,150)</u>	<u>(2,196,340)</u>
<b>Total Expenditures</b>	<u>60,905</u>	<u>64,762</u>	<u>263,550</u>	<u>279,760</u>
<b><u>Revenue</u></b>				
<b>Government Grants:</b>				
Other Municipal		2,000		
Other Provincial	37,006	0		
Federal	9,010	34,163	0	0
<b>Self-Generated:</b>				
Miscellaneous	490	3,962	0	0
	<u>46,506</u>	<u>40,125</u>	<u>0</u>	<u>0</u>
Gross Surplus (Deficit)	(14,399)	(24,637)	(263,550)	(279,760)
Funding from Reserves	2,063,011	2,082,917	2,400,700	2,476,100
Funding (to) Reserves	(2,048,612)	(2,058,280)	(2,137,150)	(2,196,340)
<b>Net Surplus (Deficit)</b>	<u>0</u>	<u>0</u>	<u>0</u>	<u>0</u>

## **8. MISCELLANEOUS EXPENDITURES AND REVENUES**

This category includes Expenditures and Revenues, which are general in nature, and not related to specific programs.

### **8-1. Special Employment Programs**

This includes provincial and federal work experience programs that the Authority typically participates in, on a nearly break-even basis.

*What do we do?*

- Summer Experience Program and other provincial or federal programs

### **8-2. Other Miscellaneous Expenditures and Revenues**

This includes non-program related items.

*What do we do?*

- payment of non-insured losses and deductibles for vandalism, loss or theft; miscellaneous amounts recovered from insurance settlements
- amounts received by us for distribution to other agencies, where expenditures and revenues are equal (e.g. receipts from provincial ministries to pay for contracts on their behalf)
- special projects funded by donations or government funding
- investment income arising from reserves and funds received in advance of program expenses

**Grand River Conservation Authority**  
**Schedule 8 - Miscellaneous Expenditures and Revenues**  
**BUDGET 2010**

	<u>Actual 2007</u>	<u>Actual 2008</u>	<u>Budget 2009</u>	<u>Budget 2010</u>
<b><u>Expenditures</u></b>				
Special Employment Programs	39,749	3,918	0	0
Other Miscellaneous	155,281	146,633	192,000	192,000
<b>Total Expenditures</b>	<b>195,030</b>	<b>150,551</b>	<b>192,000</b>	<b>192,000</b>
<b><u>Revenue</u></b>				
Municipal				
<i>General Levies</i>	0	0	0	0
<i>Special Levies</i>	0	0	0	0
<i>Other</i>	0	0	0	0
Government Grants				
<i>MNR Transfer Payments</i>	0	0	0	0
<i>Other Provincial</i>	17,589	13,579	0	0
<i>Federal</i>	32,415	2,097	20,000	20,000
Self-Generated				
<i>Investment Income</i>	538,173	518,653	500,000	500,000
<i>Miscellaneous</i>	186,427	133,231	167,000	167,000
<i>Donations</i>	32,628	53,447	35,000	35,000
<b>Total Revenue</b>	<b>807,232</b>	<b>721,007</b>	<b>722,000</b>	<b>722,000</b>
Gross Surplus (Deficit)	612,202	570,456	530,000	530,000
Funding from Reserves	0	0	0	0
Funding (to) Reserves	(485,980)	(440,392)	(400,000)	(400,000)
<b>Net Surplus (Deficit)</b>	<b>126,222</b>	<b>130,064</b>	<b>130,000</b>	<b>130,000</b>

## Grand River Conservation Authority Summary of Municipal Levy - 2010 Budget

***DRAFT - January 14, 2010***

	% CVA in Watershed	2008 for 2009 CVA in Watershed	CVA-Based Apportionment	2010 Budget Operating Levy	2010 Budget Capital Levy	2010 Budget Total Levy	Actual 2009 Levy	% Change
Brantford City	100.0%	10,042,869,516	8.9%	722,092	107,069	829,161	764,422	8.5%
County of Brant	84.0%	3,672,691,413	3.3%	264,070	39,155	303,225	279,442	8.5%
Amaranth Twp	82.0%	408,665,729	0.4%	29,383	4,357	33,740	29,968	12.6%
East Garafraxa Twp	80.0%	333,955,009	0.3%	24,012	3,560	27,572	23,432	17.7%
E. Luther Gr. Valley Twp	100.0%	265,001,346	0.2%	19,054	2,825	21,879	19,954	9.6%
Melancthon Twp	56.0%	200,336,171	0.2%	14,404	2,136	16,540	15,084	9.7%
Southgate Twp	6.0%	35,914,084	0.0%	2,582	383	2,965	2,882	2.9%
Haldimand County	41.0%	2,081,005,282	1.8%	149,626	22,186	171,812	160,450	7.1%
Norfolk County	5.0%	325,210,123	0.3%	23,383	3,467	26,850	24,617	9.1%
Halton Region	9.6%	2,164,551,473	1.9%	155,633	23,077	178,710	152,340	17.3%
Hamilton City (estimated)	4.7%	2,764,399,955	2.5%	198,763	29,472	228,235	212,419	7.4%
Oxford County	37.7%	992,141,648	0.9%	71,336	10,577	81,913	77,560	5.6%
North Perth T	2.0%	26,079,110	0.0%	1,875	278	2,153	2,112	1.9%
Perth East Twp	40.0%	471,170,072	0.4%	33,878	5,023	38,901	38,850	0.1%
Waterloo Region	100.0%	63,470,530,508	56.4%	4,563,597	676,674	5,240,271	4,890,572	7.2%
Wellington North Twp	51.0%	568,837,358	0.5%	40,900	6,064	46,964	45,559	3.1%
Centre Wellington Twp	100.0%	3,199,718,847	2.8%	230,063	34,113	264,176	243,631	8.4%
Guelph/Eramosa Twp	100.0%	1,872,376,656	1.7%	134,626	19,962	154,588	139,340	10.9%
Town of Erin	49.0%	874,663,780	0.8%	62,889	9,325	72,214	64,222	12.4%
Guelph City	100.0%	16,598,505,610	14.7%	1,193,449	176,960	1,370,409	1,267,304	8.1%
Mapleton Tp	95.0%	936,442,018	0.8%	67,331	9,984	77,315	72,458	6.7%
Puslinch Twp	75.0%	1,252,467,250	1.1%	90,054	13,353	103,407	83,382	24.0%
<b>Total</b>		<b>112,557,532,958</b>	<b>100.00%</b>	<b>8,093,000</b>	<b>1,200,000</b>	<b>9,293,000</b>	<b>8,610,000</b>	<b>7.93%</b>

Increase:                   **4.97%**                   **33.33%**

**Grand River Conservation Authority  
2010 Budget  
Recommended Special Municipal Levies**

<u>Project</u>	<u>Special Levy</u>	<u>Major Benefiting Municipality</u>
East-side Subwatershed Study	50,000	Region of Waterloo
Upper Blair Creek Drainage Study	100,000	City of Kitchener
<b>Total Special Municipal Levies</b>	<u><u>150,000</u></u>	

# THE CORPORATION OF THE TOWNSHIP OF WELLINGTON NORTH

## BY-LAW NUMBER 7-10

**BEING A BY-LAW TO AUTHORIZE THE EXECUTION OF AN AGREEMENT BETWEEN THE CORPORATION OF THE COUNTY OF GREY AND THE CORPORATION OF THE TOWNSHIP OF WELLINGTON NORTH (Boundary Road Agreement and Maintenance Costs for Grey Road 109).**

**AUTHORITY: Municipal Act, 2001, S.O. 2001, c.25, as amended, Sections 20 and 29.**

**WHEREAS** Sections 20 and 29 of The Municipal Act, 2001, govern agreements between adjoining municipalities for the maintenance and repair of any highway forming the boundary between such municipalities, including bridges thereon.

**AND WHEREAS** the County of Grey and the Township of Wellington North have by By-Law duly passed by their respective Councils designated and assumed as Boundary Roads to be improved and maintained under the provisions of "The Public Transportation and Highway Improvement Act" certain portions of the highway forming the boundary between the Counties of Grey and Wellington, as hereinafter particularly described.

**AND WHEREAS** the said Municipalities have joint jurisdiction over the portions of said highway so assumed as Boundary Roads and it is deemed expedient and necessary to provide for the allocation of responsibility for maintenance and repair of said highway.

**NOW THEREFORE THE COUNCIL OF THE CORPORATION OF THE TOWNSHIP OF WELLINGTON NORTH ENACTS AS FOLLOWS:**

1. That the Corporation of the Township of Wellington North enter into an agreement with the Corporation of the County of Grey, in substantially the same form as the agreement attached hereto as Schedule "A" (Boundary Road Agreement and Maintenance Costs for Grey Road 109).
2. That the Mayor and the Clerk of the Corporation of the Township of Wellington North are hereby authorized and directed to execute the said agreement and all other documentation required on behalf of the Corporation.

**READ A FIRST, SECOND AND THIRD TIME AND FINALLY PASSED  
THIS 25<sup>TH</sup> DAY OF JANUARY, 2010.**

---

**MICHAEL BROOMHEAD,  
MAYOR**

---

**LORRAINE HEINBUCH,  
CHIEF ADMINISTRATIVE OFFICER/CLERK**



CORPORATION OF THE  
TOWNSHIP OF WELLINGTON NORTH  
BY-LAW NUMBER 7-10

SCHEDULE "A"

CORPORATION OF THE COUNTY OF GREY

WINTER MAINTENANCE AGREEMENT  
2009/2010 and 2010/2011 and 2011/2012

BETWEEN:

THE CORPORATION OF THE                      and              THE CORPORATION OF THE  
TOWNSHIP OF WELLINGTON NORTH                      COUNTY OF GREY

KENILWORTH, ONTARIO

OWEN SOUND, ONTARIO

phone (519) 848-3620

phone (519) 376-7337

fax (519) 848-3228

fax (519) 376-0967

representative

representative

GARY WILLIAMSON

GARY SHAW

(the "Township")

(the "County")

**1. Description of Roadway and Details of Work**

It is hereby agreed that the County shall provide year round maintenance on the portion of the shared boundary road between the Township and the County described below (the "Maintained Portion") and shall make capital improvements as contemplated in section 4 below.

<u>Road Name and Description</u>	<u>Distance One Way</u>
Grey Road 109 on the Grey/Wellington Boundary Line	Approx 1.0 km

The County shall have full supervision and control over maintenance and repairs of, and capital improvements on, the Maintained Portion.

**2. Term of Agreement**

This Agreement is for a three year period from May 1st, 2009 to April 30<sup>th</sup>, 2012. Any renewal agreement shall be in place by May 1<sup>st</sup> of the termination year.

### **3. Annual Maintenance Re-imbusement**

The Township and the County shall each be responsible for one-half of the maintenance costs for the Maintained Portion. For the term of this agreement the annual maintenance costs for Maintained Portion shall estimated to be SEVEN THOUSAND DOLLARS (\$7,000.00) per road kilometre. The Township shall pay the County \$3,500 on or before July 15 each year of the term of this Agreement.

No later than June 15 following the end of each year of the term of this Agreement, the County shall provide the Township with a detailed statement of the work done and the expenditures made on the Maintained Portion in such year (May to April). No charge shall be made for superintendence or interest.

### **4. Capital Costs**

The Township and the County shall each be responsible for one-half of all capital improvements on the Maintained Portion such as road construction, hot mix asphalt resurfacing and the shoulder graveling associated with this resurfacing, bridge repairs and replacement, or surface treatment.

Except in the case of emergencies, the County shall notify the Township two years in advance of any such capital improvement work proposed and the extent and cost of the capital improvement work shall be mutually agreed.

The Township shall pay the County one-half of the capital-cost no later than July 15 in the year in which the capital improvement is completed.

### **5. Indemnification**

Each party shall be responsible for any physical injuries, death, or damage to property arising as a result of its own negligence, and shall indemnify and save harmless the other from any and all actions, causes of action, suits, debts, claims, expenses and demands of any nature or kind whatsoever relating to said negligence and arising out of the performance of this Agreement.

### **6. Insurance**

During the term of this Agreement, the County and the Township shall each maintain liability insurance for bodily injury (including death) and property damage in the amount of at least ten million dollars. To evidence the existence of such insurance, the parties shall supply each other, upon request, with a Certificate of Insurance. All such policies of insurance shall stay in force and not be amended, cancelled, or allowed to lapse during the term of this Agreement, without the prior written agreement of the parties.

### **7. Force Majeure**

The County shall not be held responsible for any damage or delays as a result of wars, invasions, insurrections, demonstrations, or as a result of decisions by civilian or military

authorities, fires, floods, human health emergencies, strikes and generally as a result of any event that is beyond the County's reasonable control.

Each party agrees that in the event of a disaster or force majeure, the parties shall co-operate and each party shall make all reasonable efforts to provide temporary replacement service until permanent service is completely restored by the County.

**8. Termination**

Either party may terminate this agreement by May 1<sup>st</sup> of any year for the remaining term provided notice has been given in writing to the other party.

IN WITNESS whereof the parties have had their duly authorized officers execute this Agreement.

Executed this \_\_\_\_ day of \_\_\_\_\_, 2009.

**The Corporation of the Township  
of Wellington North**

**The Corporation of the County  
of Grey**

\_\_\_\_\_  
Mayor signature

\_\_\_\_\_  
Warden signature

\_\_\_\_\_  
(please print)

\_\_\_\_\_  
(please print)

\_\_\_\_\_  
Clerk signature

\_\_\_\_\_  
County Clerk signature

\_\_\_\_\_  
(please print)

\_\_\_\_\_  
(please print)

\_\_\_\_\_  
Date

\_\_\_\_\_  
Date

**THE CORPORATION OF THE  
TOWNSHIP OF WELLINGTON NORTH**

**BY-LAW NUMBER 8-10**

**BEING A BY-LAW TO APPOINT A BUILDING INSPECTOR FOR  
THE CORPORATION OF THE TOWNSHIP OF WELLINGTON  
NORTH.**

**AUTHORITY:** Municipal Act, 2001, S.O. 2001, Chapter 25, as amended, Section 227  
Building Code Act, 1992, S.O. 1992, Chapter 23, as amended, Section 3.

**WHEREAS** pursuant to Section 3 of the Building Code Act, 1992, S.O. 1992, Chapter 23; as amended, the Council of a municipality may appoint inspectors for the purposes of enforcing the act;

**AND WHEREAS** pursuant to Section 227 of the Municipal Act, 2001, S.O. 2001, Chapter 25, as amended, provides for the role of officers and employees of the municipality;

**AND WHEREAS** it is deemed expedient to appoint a Building Inspector.

**NOW THEREFORE THE COUNCIL OF THE CORPORATION OF THE  
TOWNSHIP OF WELLINGTON NORTH** enacts as follows:

1. **THAT PATTY WRIGHT** is hereby appointed as Building Inspector for the Township of Wellington North effective February 1, 2010 the position to be known as Building Inspector.
2. **THAT** the said **PATTY WRIGHT** shall hold office during the pleasure of the Council and shall exercise all the authority, powers and rights and shall perform all the duties and obligations which by Statute or by By-laws are or may be conferred or imposed upon the Building Inspector and other duties that may be imposed by Council.

**READ A FIRST, SECOND AND THIRD TIME AND FINALLY PASSED  
THIS 25TH DAY OF JANUARY, 2010.**

---

**MICHAEL BROOMHEAD,  
MAYOR**

---

**LORRAINE HEINBUCH,  
CHIEF ADMINISTRATIVE OFFICER/CLERK**

**THE CORPORATION OF THE  
TOWNSHIP OF WELLINGTON NORTH**

**BY-LAW NUMBER 9-10**

**RATING BY-LAW**

**BEING A BY-LAW IMPOSING SPECIAL ANNUAL DRAINAGE RATES  
UPON LAND IN RESPECT OF WHICH MONEY IS BORROWED UNDER  
THE *TILE DRAINAGE ACT*.**

**AUTHORITY:        *Tile Drainage Act, R.S.O. 1990, Chapter T.8, Section 8***

**WHEREAS** owners of land in the municipality have applied to the Council under the *Tile Drainage Act* for loans for the purpose of constructing subsurface drainage works on such land;

**AND WHEREAS** the Council has, upon their application, lent the owners the total sum of \$38,500.00 to be repaid with interest by means of rates hereinafter imposed;

**BE IT THEREFORE ENACTED** by the Council:

1. That annual rates as set out in the Schedule 'A' attached hereby imposed upon such land as described for a period of ten years, such rates to be levied and collected in the same manner as taxes.

***READ A FIRST, SECOND AND THIRD TIME AND FINALLY PASSED THIS 25<sup>TH</sup>  
DAY OF JANUARY, 2010.***

---

**MICHAEL BROOMHEAD,  
MAYOR**

---

**LORRAINE HEINBUCH,  
CHIEF ADMINISTRATIVE OFFICER/CLERK**

**THE CORPORATION OF THE TOWNSHIP OF WELLINGTON NORTH**

**SCHEDULE 'A' TO BY-LAW NUMBER 9-10**

Name and address of owner	Description of land drained	Proposed date of loan	Sum to be loaned \$	Annual rate to be imposed \$
Weber, Laverne B & Erma RR #6 Mount Forest, ON N0G 2L0	N Part Lot 4 Concession 6 (A. T.) Roll #8-15300	February 1, 2010	5,700.00	774.45
749662 Ontario Limited c/o Robert Checkley RR #3 Arthur, ON N0G 1A0	Part Lots 32 & 33 Concession 4 (W. G.) Roll #18-10810	February 1, 2010	32,800.00	4,456.47
* Total principal of debenture and total sum shown on by-law			*\$38,500.00	\$5,230.92

**THE CORPORATION OF THE  
TOWNSHIP OF WELLINGTON NORTH**

**BY-LAW NUMBER 10-10**

**BEING A BY-LAW TO AUTHORIZE A LICENCE AGREEMENT  
WITH RESPECT TO THE PLACEMENT OF ANTENNAE ON THE  
COMMUNICATIONS TOWER AT THE TOWNSHIP'S OFFICES.**

*WHEREAS* Section 4 of the Municipal Act, 2001 as amended (hereinafter called "the Act") provides that the inhabitants of every municipality are incorporated as a body corporate and Section 5 of the Act provides that the powers of a municipality shall be exercised by its Council, and further, Section 9 of the Act provides that a municipality has the capacity, rights, powers and privileges of a natural person for the purpose of exercising its authority under the Act or any other Act.

*NOW THEREFORE THE COUNCIL OF THE CORPORATION OF THE  
TOWNSHIP OF WELLINGTON NORTH* enacts as follows:

1. The Corporation shall enter into a Tower Site Licence Agreement in substantially the same form as the agreement attached hereto as Schedule 1.
2. The Mayor and the Clerk of the Corporation are hereby authorized and directed to sign the said Agreement after it has been duly signed on behalf of the Licensee corporation.

***READ A FIRST, SECOND AND THIRD TIME AND FINALLY PASSED  
THIS 25TH DAY OF JANUARY, 2010.***

---

**MICHAEL BROOMHEAD,  
MAYOR**

---

**LORRAINE HEINBUCH,  
CHIEF ADMINISTRATIVE OFFICER/CLERK**

**CORPORATION OF THE  
TOWNSHIP OF WELLINGTON NORTH  
BY-LAW NUMBER 10-10  
SCHEDULE "1"  
TOWER SITE LICENCE AGREEMENT**

**THIS AGREEMENT made in duplicate as of the 23<sup>rd</sup> day of July, 2009.**

**BETWEEN:**

**THE CORPORATION OF THE TOWNSHIP OF WELLINGTON NORTH,  
7490 Sideroad 7 West, Kenilworth, Ontario N0G 2E0**

**Hereinafter referred to as "the Licensor",**

**- AND -**

**PACKET-TEL CORP., carrying on business under the firm name and style,  
PACKET WORKS,  
515 Dotzert Court, Waterloo, Ontario N2L 6A7**

**Hereinafter referred to as "the Licensee".**

**WHEREAS** the Licensor is the owner of a communications tower located on the Licensor's property at 7490 Sideroad 7 West, Kenilworth, Ontario, in the municipality of the Township of Wellington North, in the County of Wellington, in the Province of Ontario (hereinafter referred to as "the Tower" and "the Site" respectively).

**AND WHEREAS** the parties hereto have agreed to enter into the Licence with respect to the Site and the Tower upon the terms and conditions hereinafter set out.

**NOW THEREFORE THIS AGREEMENT WITNESSETH** that in consideration of the premises and the mutual covenants and obligations contained herein, it is agreed by and between the parties hereto as follows:

**TERM**

1. This agreement is for a term of five (5) years one (1) month commencing on the 1<sup>st</sup> day of August, 2009 terminating on the 31<sup>st</sup> day of August, 2014.



**LICENCE FEE**

2. In consideration of the Licence herein granted, and without prior demand, the Licensee shall pay to the Licensor an annual fee of SEVEN HUNDRED AND FIFTY DOLLARS (\$750.00) per antenna installed and payable in advance, without any deduction or set-off whatsoever, during the term of this agreement. The annual fee shall be due and payable on the 1<sup>st</sup> day of August in each year provided that if an antenna is installed between August 1<sup>st</sup> of one year and August 1<sup>st</sup> of the next year, the first advance rental payment shall be prorated from the installation date to the following August 1<sup>st</sup>.

**LICENCE**

3. The Licensor hereby grants to the Licensee a Licence to install and operate a maximum of three (3) antennae, associated cables and equipment cabinet on the Tower and obtain power from the Licensor as outlined in Section 2 of the Licence Fee to operate the above mentioned equipment. Frequencies in the 900 MHz, 2.4 GHz, 4.9 GHz and 5 GHz bands are reserved for the exclusive use of the Licensor and Licensee on the Tower.
4. The Licensee shall not assign, transfer or otherwise dispose of, or encumber the Licence granted herein in whole or in part without obtaining the prior written consent of the Licensor, which consent may not be unreasonably withheld.

**ACCESS**

5. The Licensor shall make available to the Licensee, its officers, employees and/or agents reasonable access to the Site for the purposes necessary to the reasonable exercise by the Licensee of the Licence granted herein. In this paragraph "reasonable access" means upon reasonable prior notice to the Licensor through its CAO/Clerk or Deputy Clerk and access to the Tower and the Site at a time and in a manner that does not unduly interfere with the normal vehicular and equipment activities of the Licensor which the Licensee acknowledges is a municipal corporation serving the public from and at the Site.

**INDEMNIFICATION**

6. The Licensee shall indemnify and save harmless the Licensor for any damage to the Site, (including the said Tower and other structures and equipment thereon) occasioned by the Licensee's use thereof as permitted herein. The Licensee shall at all times indemnify and save harmless the Licensor from and against any and all claims, demands, losses, costs, charges, expenses, actions and other proceedings (including those in connection with workers' compensation or any similar or successor arrangement) made, brought against, suffered by or imposed on the Licensor or its property in respect of any failure by the Licensee to fulfill any of its obligations under this agreement or for any reason whatsoever or in respect of any loss, damage or injury (including injury resulting in death):
- (a) to any person or property (including, without restricting the generality of the foregoing, employees, contractors, agents and property of the Licensor) directly or indirectly arising out of, resulting from or sustained by reason of the occupation or use of the lands, or any operation in connection therewith or any fixtures or chattels thereon, or
  - (b) to any person while on adjoining lands of the Licensor in the course of that person's entry onto or exit from the Site.

**INSURANCE**

7. The Licensee shall take out and keep in force during the term of this licence comprehensive property damage and public and general liability insurance for coverage of no less than Two Million Dollars (\$2,000,000.00) per occurrence.

**NO TENANCY, AGENCY OR PARTNERSHIP CREATED**

8. Nothing contained herein shall be deemed or construed by the parties as creating any relationship between the parties other than that of Licensor and Licensee.

**ACKNOWLEDGEMENT**

9. The Licensee acknowledges that the Licensor will install up to a maximum of three (3) further antennae on the Tower for use by or for the municipality during the term of this agreement, and the Licensor covenants and agrees not to install or allow the installation of any further antennae on the Tower during the term of this agreement.

**NOTICE**

10. Any notice which is required to be given under the terms of this agreement may be effectively given by the parties hereto if personally delivered or by mailing the same by prepaid registered mail directed to:

in the case of the Licensor to:

The Corporation of the Township of Wellington North  
P.O. Box 125  
7490 Sideroad 7 West  
KENILWORTH, Ontario  
N0G 2E0

Attention: CAO

in the case of the Licensee to:

Packet –Tel Corp.  
cob Packet Works  
515 Dotzert Court  
WATERLOO, Ontario  
N2L 6A7

Attention: John Fagg

Any notice shall be deemed to be effectively given on the date of personal delivery or on the expiration of the fifth (5<sup>th</sup>) day following the day on which such mailing was effected, except in the case of postal interruption when personal service only shall be effective.

**TERMINATION**

11. If the Licensee defaults in performing any of its obligations under this agreement, the Licensor shall give written notice to the Licensee of such default giving the Licensee fifteen (15) days to remedy such default failing which the Licensor may terminate this Licence and the Licensee shall then forthwith remove its chattels and fixtures, if any, from the Site and shall restore the Site to the condition in which it was at the commencement of this agreement.

**SUCCESSORS**

12. This agreement and the covenants and obligations herein contained shall enure to the benefit of and be binding upon the Licensor, its successors and assigns and shall be binding upon the Licensee, its permitted successors and assigns.

**GENERAL PROVISIONS**

13. This agreement may only be amended in writing executed by both parties hereto.
14. The parties acknowledge that this agreement does not grant any interest, whether legal or equitable, to the Licensee in or to any real property of the Licensor.
15. The Licensee shall maintain all equipment in good repair at its own expense and shall repair on written notice from the Licensor.
16. The Licensee shall leave the Site in substantially the same condition at the expiry of this Agreement as it was at the commencement and the Licensee may remove its equipment from the Site provided all damage occasioned thereby shall forthwith be repaired by the Licensee at its expense.

- 17. The Licensee shall comply with all Federal, Provincial and Municipal laws, Rules, Regulations and By-laws and shall hold the Licensor harmless from the consequence of its failure to do so.
- 18. The Licensor shall not be liable, directly or indirectly, for any personal injuries that may be suffered or sustained by any person who may be on the Site or for any loss of or damage or injury to property belonging to the Licensee or any other person unless such injury, loss or damage is due to the Licensor’s negligence or default or the negligence or default of those for whom the Licensor is in law responsible.
- 19. The Licensee shall fully indemnify and save harmless the Licensor from and against all construction liens and related costs and other claims in connection with all work performed by or for the Licensee on the Site, and shall promptly remove all registered claims from title.
- 20. This agreement shall be interpreted in accordance with the laws of the Province of Ontario.

**IN WITNESS WHEREOF** the parties hereto have duly caused this agreement to be executed.

**THE CORPORATION OF  
THE TOWNSHIP OF WELLINGTON NORTH**

Per: \_\_\_\_\_  
Michael Broomhead – Mayor

Per: \_\_\_\_\_  
Lorraine Heinbuch – CAO/Clerk  
We have authority to bind the corporation.

**PACKET-TEL CORP.**

Per: \_\_\_\_\_  
President – John Fagg  
I have authority to bind the corporation.

**TOWNSHIP OF WELLINGTON NORTH**  
**Regular Meeting of Council**

MOVED BY: \_\_\_\_\_ DATE: January 25, 2010

SECONDED BY: \_\_\_\_\_ RES. NO.: \_\_\_\_\_

**THAT the Council of the Corporation of the Township of Wellington North approve the accounts totalling \$263,033.07 for payment.**

MAYOR \_\_\_\_\_

CARRIED

DEFEATED

Township of Wellington North  
 CHEQUE DISTRIBUTION REPORT  
 Payables Management

Ranges:      From:                      To:                                      From:                                      To:  
 Vendor ID      First                      Last                      Chequebook ID      First                      Last  
 Vendor Name    First                      Last                      Cheque Number      042537                      042642  
 Cheque Date    First                      Last  
Sorted By:      Cheque Number

Distribution Types Included: PURCH, TRADE, MISC, FREIGHT, TAXES, WRITE, OTHER, GST

ChqNo:	042537	Date:	1/15/2010	Vendor:	Ontario Muncpal Insurance Exchange	Amount:	\$150,000.00
	InvNo: PARTIAL 2008 RETRO		InvDesc: ADM - Partial Insurance Paymen		InvAmt: \$150,000.00		
ChqNo:	042538	Date:	1/19/2010	Vendor:	B M Ross and Associates	Amount:	\$9,967.28
	InvNo: INV 2086		InvDesc: WW/SS/BW MillerStRcnstrcnDec09		InvAmt: \$307.76		
	InvNo: INV 2083		InvDesc: WW/SS/BW ByelandDrive Dec09		InvAmt: \$424.41		
	InvNo: INV 2078		InvDesc: WW/AV&MPDrnkngWtrSystemsDec09		InvAmt: \$2,626.37		
	InvNo: INV 2069		InvDesc: BW/MF NormanbyStRcnstrn Dec09		InvAmt: \$6,608.74		
ChqNo:	042539	Date:	1/19/2010	Vendor:	Carswell	Amount:	\$196.25
	InvNo: INV 5037992		InvDesc: ADM/OntEmplmntStndrd2010Edtn		InvAmt: \$87.10		
	InvNo: INV 4599994		InvDesc: ADM/RustDEyeOntMunLawMan		InvAmt: \$109.15		
ChqNo:	042540	Date:	1/19/2010	Vendor:	Chalmers Fuels Inc	Amount:	\$7,921.23
	InvNo: INV 347847		InvDesc: REC/DamascusCC FurnaceFuelDyed		InvAmt: \$330.98		
	InvNo: INV 349529		InvDesc: PROP/AVChamber FurnaceFuel		InvAmt: \$307.15		
	InvNo: INV 347389		InvDesc: PROP/AVChamber FurnaceFuel		InvAmt: \$344.05		
	InvNo: INV 349234		InvDesc: BW DieselFuelClear		InvAmt: \$1,830.47		
	InvNo: INV 347693		InvDesc: BW DieselFuelDyed		InvAmt: \$475.28		
	InvNo: INV 346489		InvDesc: BW DieselFuelClear		InvAmt: \$1,229.42		
	InvNo: INV 346490		InvDesc: BW DieselFuelDyed		InvAmt: \$1,520.78		
	InvNo: INV 339112		InvDesc: BW FurnaceFuelDyed		InvAmt: \$230.01		
	InvNo: INV 350111		InvDesc: BW Diesel Fuel Clear		InvAmt: \$612.18		
	InvNo: INV 349299		InvDesc: BW Diesel Fuel Dyed		InvAmt: \$244.66		
	InvNo: INV 347802		InvDesc: BW UnirexEp2 Grease		InvAmt: \$117.34		
	InvNo: INV 342642		InvDesc: BW DieselFuelClear		InvAmt: \$678.91		
ChqNo:	042541	Date:	1/19/2010	Vendor:	Coffey Plumbing	Amount:	\$152.49
	InvNo: INV 10913		InvDesc: ADM SeniorsHallSrvccall&waterc		InvAmt: \$152.49		
ChqNo:	042542	Date:	1/19/2010	Vendor:	Corporate Express	Amount:	\$443.28
	InvNo: INV 24127246		InvDesc: ADM FileFldrsTapePaperStapler		InvAmt: \$110.65		
	InvNo: INV 24095531		InvDesc: ADM/PI&C/WW PaperBindersTabs		InvAmt: \$332.63		
ChqNo:	042543	Date:	1/19/2010	Vendor:	CRESSMAN, RON	Amount:	\$73.26
	InvNo: 2009 SAFETY BOOTS		InvDesc: REC/MF 2009SafetyBoots		InvAmt: \$73.26		
ChqNo:	042544	Date:	1/19/2010	Vendor:	Deverell & Lemaich LLP	Amount:	\$4,386.17
	InvNo: DEC21/09ACCT AVILA		InvDesc: C&I/Avila/MurphyPrprtyOctDec09		InvAmt: \$4,386.17		
ChqNo:	042545	Date:	1/19/2010	Vendor:	Elmira Farm Service (2000) Ltd.	Amount:	\$566.30
	InvNo: INV 436013		InvDesc: BW OilFuelAirFiltersWireHoseFt		InvAmt: \$566.30		
ChqNo:	042546	Date:	1/19/2010	Vendor:	Excel Business Systems	Amount:	\$1,748.54
	InvNo: INV 83556		InvDesc: ADM DigitalCopierDec2009		InvAmt: \$223.39		
	InvNo: INV 83557		InvDesc: ADM ColourCopierDec2009		InvAmt: \$1,525.15		
ChqNo:	042547	Date:	1/19/2010	Vendor:	Frey Communications	Amount:	\$123.14
	InvNo: INV 4067		InvDesc: PI&C BrotherInk&LaminatorFilm		InvAmt: \$77.95		
	InvNo: INV 4086		InvDesc: PI&C Laminator Film		InvAmt: \$45.19		
ChqNo:	042548	Date:	1/19/2010	Vendor:	Harold Jones Enterprises	Amount:	\$354.84
	InvNo: INV 646122		InvDesc: BWBoltsNylocsNutsMufflerClamps		InvAmt: \$81.19		
	InvNo: INV 623849		InvDesc: BW HydraulicHose-3/8ends(6)		InvAmt: \$273.65		
ChqNo:	042549	Date:	1/19/2010	Vendor:	International Trade Specialist	Amount:	\$267.72

Township of Wellington North  
 CHEQUE DISTRIBUTION REPORT  
 Payables Management

InvNo: INV 21573      InvDesc: BW/WSS/ADM PrntrTbleDataBndrs      InvAmt: \$267.72

ChqNo:	042550	Date:	1/19/2010	Vendor:	John W. Jeffery	Amount:	\$105.00
	InvNo: NOV/DEC09 MILEAGE		InvDesc: ADM Nov/Dec09mileage			InvAmt:	\$105.00
ChqNo:	042551	Date:	1/19/2010	Vendor:	J J McLellan & Son	Amount:	\$231.00
	InvNo: INV W54715		InvDesc: BW SkyjackSizzorLiftRental			InvAmt:	\$231.00
ChqNo:	042552	Date:	1/19/2010	Vendor:	Jo-Alan Enterprises	Amount:	\$1,208.55
	InvNo: INV DEC-2009		InvDesc: ANIMAL Dec2009Standby&Fees			InvAmt:	\$1,208.55
ChqNo:	042553	Date:	1/19/2010	Vendor:	Kwik Snaks Ltd	Amount:	\$720.92
	InvNo: INV 152532		InvDesc: REC/MF GatoradeOilFriesChocBar			InvAmt:	\$720.92
ChqNo:	042554	Date:	1/19/2010	Vendor:	L & M Food Market	Amount:	\$250.00
	InvNo: CHRISTMAS09GIFTCARDS		InvDesc: ADM Christmas09StaffGiftCertif			InvAmt:	\$250.00
ChqNo:	042555	Date:	1/19/2010	Vendor:	Lodwich Art	Amount:	\$52.50
	InvNo: INV 28 - NOV/09		InvDesc: PROP/AV officeNov09Janitorial			InvAmt:	\$52.50
ChqNo:	042556	Date:	1/19/2010	Vendor:	Long's Home Hardware	Amount:	\$1,186.49
	InvNo: INV 2221860		InvDesc: REC/AV 26"SnowThrower			InvAmt:	\$1,186.49
ChqNo:	042557	Date:	1/19/2010	Vendor:	Lorick Vending	Amount:	\$69.00
	InvNo: INV 8526		InvDesc: ADM/PROP BottledWater			InvAmt:	\$69.00
ChqNo:	042558	Date:	1/19/2010	Vendor:	Manion John	Amount:	\$945.50
	InvNo: DEC09LIVESTOCKCLAIM		InvDesc: ANIMAL/Dec09LivestockClaim			InvAmt:	\$945.50
ChqNo:	042559	Date:	1/19/2010	Vendor:	Mark's Work Wearhouse Ltd.	Amount:	\$1,474.92
	InvNo: INV 3766899		InvDesc: FIRE/AV FleeceJobShirts&Crestg			InvAmt:	\$1,474.92
ChqNo:	042560	Date:	1/19/2010	Vendor:	Mount Forest Foodland	Amount:	\$700.00
	InvNo: XMAS09 GIFT CARDS		InvDesc: ADMChristmas09GiftCertificates			InvAmt:	\$700.00
ChqNo:	042561	Date:	1/19/2010	Vendor:	North Wellington Co-op Service	Amount:	\$1,859.95
	InvNo: INV 522		InvDesc: ADM PropaneBulk			InvAmt:	\$766.10
	InvNo: INV 996624		InvDesc: ADM Propane Bulk			InvAmt:	\$666.68
	InvNo: INV 991357		InvDesc: ADM PropaneTAnkRental			InvAmt:	\$52.45
	InvNo: INV 995782		InvDesc: REC/AV PropaneRefill			InvAmt:	\$85.02
	InvNo: INV 318		InvDesc: REC/AV PropaneRefill			InvAmt:	\$91.32
	InvNo: INV 996139		InvDesc: REC/AV PropaneRefill			InvAmt:	\$85.02
	InvNo: INV 997939		InvDesc: REC/AV PropaneRefill			InvAmt:	\$85.02
	InvNo: INV 998748		InvDesc: REC/AV PropaneRefill			InvAmt:	\$28.34
ChqNo:	042562	Date:	1/19/2010	Vendor:	Ont Clean Water Agency	Amount:	\$3,723.81
	InvNo: INV 000030215		InvDesc: SS/MF 4thQrtrCapital2009			InvAmt:	\$1,895.98
	InvNo: INV 000030214		InvDesc: SS/AV 4rthQrtrCapital2009			InvAmt:	\$1,827.83
ChqNo:	042563	Date:	1/19/2010	Vendor:	Purolator Courier Ltd	Amount:	\$24.15
	InvNo: INV 3433042 3		InvDesc: BW&L.HeinbuchPersonalCouriers			InvAmt:	\$17.19
	InvNo: INV 3447417 1		InvDesc: ADM courier to MinOfTourism			InvAmt:	\$6.96
ChqNo:	042564	Date:	1/19/2010	Vendor:	Reeves Construction Ltd	Amount:	\$8,337.08
	InvNo: INV 1636		InvDesc: BW Dec09StandbyLoader/Blade			InvAmt:	\$4,263.02
	InvNo: INV 1637		InvDesc: BW Dec09JCB/Blade/Dozer			InvAmt:	\$4,074.06
ChqNo:	042565	Date:	1/19/2010	Vendor:	Royal Bank Visa	Amount:	\$847.25
	InvNo: G.WILLIAMSON DEC09		InvDesc: SS/BW CVORCertRnwl/Meals			InvAmt:	\$219.93
	InvNo: L.SPAHR DEC09		InvDesc: REC/Sony930Pink/Meals			InvAmt:	\$296.07
	InvNo: J.MORRISON DEC09		InvDesc: FIRE/AV Dec30fuel/PioneerPetrc			InvAmt:	\$72.24
	InvNo: J.JEFFERY DEC09		InvDesc: FIRE/MF36issuesFireEngineering			InvAmt:	\$101.35
	InvNo: L.HEINBUCH DEC09		InvDesc: ADM&A/R WeeklyPlannerDesk2PPD			InvAmt:	\$157.66
ChqNo:	042566	Date:	1/19/2010	Vendor:	Stephen Hale	Amount:	\$866.25
	InvNo: INV 84		InvDesc: PROP/SS Dec2009cleanings			InvAmt:	\$866.25



Township of Wellington North  
 CHEQUE DISTRIBUTION REPORT  
 Payables Management

ChqNo:	042567	Date:	1/19/2010	Vendor:	Superior Propane	Amount:	\$1,826.74
	InvNo: INV 63801957		InvDesc: BW/WLShop BulkPropane		InvAmt:	\$1,826.74	
ChqNo:	042568	Date:	1/19/2010	Vendor:	The Ontario Aggregate Resource	Amount:	\$4,380.35
	InvNo: INV 10-123084		InvDesc: BW 2009License&PermitFees		InvAmt:	\$2,163.61	
	InvNo: INV 10-123090		InvDesc: BW 2009License&PermitFees		InvAmt:	\$2,216.74	
ChqNo:	042569	Date:	1/19/2010	Vendor:	Truckliner 2000 Inc.	Amount:	\$508.50
	InvNo: INV 2144		InvDesc: BW RprLinerVikingSaltTruck		InvAmt:	\$508.50	
ChqNo:	042570	Date:	1/19/2010	Vendor:	Twp of Wellington North	Amount:	\$1,482.47
	InvNo: TORCH RELAY DEC28/09		InvDesc: ECDEV/Dec28thTorchRun		InvAmt:	\$1,482.47	
ChqNo:	042571	Date:	1/19/2010	Vendor:	Valerie M'Garry Law Office	Amount:	\$7,927.78
	InvNo: INV 655		InvDesc: ADM OMEXInsuranceMatter		InvAmt:	\$7,927.78	
ChqNo:	042572	Date:	1/19/2010	Vendor:	Walsh's Pharmacy	Amount:	\$6.77
	InvNo: OCT14/09 BATTERIES		InvDesc: WW Batteries		InvAmt:	\$6.77	
ChqNo:	042573	Date:	1/19/2010	Vendor:	Waste Management	Amount:	\$1,235.20
	InvNo: INV 111162250		InvDesc: BW/REC Dec09BasicService		InvAmt:	\$1,098.52	
	InvNo: INV 111160566		InvDesc: FIRE/AV Dec09BasicService		InvAmt:	\$90.69	
	InvNo: INV 111163369		InvDesc: REC/DamascusCCDec09BasicSrv		InvAmt:	\$45.99	
ChqNo:	042574	Date:	1/19/2010	Vendor:	Wellington Advertiser	Amount:	\$104.80
	InvNo: INV 74678		InvDesc: ADM Notice:HolidayOfficeHours		InvAmt:	\$104.80	
ChqNo:	042575	Date:	1/19/2010	Vendor:	Wellington North Power	Amount:	\$8,618.82
	InvNo: INV 1104.1.95-DEC/09		InvDesc: SL/DamascusRprLight		InvAmt:	\$92.31	
	InvNo: INV 1104.1.80-DEC/09		InvDesc: SL/AV&MF Dec09Billing/Lbr		InvAmt:	\$1,344.69	
	InvNo: INV 1104.1.90 DEC/09		InvDesc: WW/SS Dec09Billings		InvAmt:	\$7,181.82	
ChqNo:	042576	Date:	1/19/2010	Vendor:	Young's Home Hardware Bldg Centre	Amount:	\$27.10
	InvNo: INV 206226		InvDesc: WW Pliers/WallScrapper		InvAmt:	\$27.10	
ChqNo:	042578	Date:	1/21/2010	Vendor:	Ammerlaan Nick	Amount:	\$709.18
	InvNo: 2009REFUND/R#16-0330		InvDesc: A/R 2009TaxRefund/R#16-03300		InvAmt:	\$709.18	
ChqNo:	042579	Date:	1/21/2010	Vendor:	ANDREWS, Mr. & Mrs. Richard	Amount:	\$561.30
	InvNo: TAXREFUND/R#4-20000		InvDesc: A/R TaxRefund/R#4-20000		InvAmt:	\$561.30	
ChqNo:	042580	Date:	1/21/2010	Vendor:	Arthur Crushed Stone	Amount:	\$1,260.00
	InvNo: INV 481		InvDesc: BW SnowRmvl@DumpJan8,9&10		InvAmt:	\$1,260.00	
ChqNo:	042581	Date:	1/21/2010	Vendor:	B.C. Construction	Amount:	\$1,900.00
	InvNo: ROONEY ENTRANCE RFND		InvDesc: A/R EntranceRefund/RalphRooney		InvAmt:	\$1,900.00	
ChqNo:	042582	Date:	1/21/2010	Vendor:	Bell Canada Box 5400 & 9000	Amount:	\$674.63
	InvNo: 5198483620TOLL/JAN10		InvDesc: ADM/KenilworthTollFreeLnJan10		InvAmt:	\$48.56	
	InvNo: ACCT508129326 JAN10		InvDesc: ADM/KnlwrthDialUpInternetJan10		InvAmt:	\$28.30	
	InvNo: 519-848-5291 JAN/10		InvDesc: SS/WW WPCP-EDIFaxLineJan10		InvAmt:	\$87.99	
	InvNo: 40230744 JAN5/2010		InvDesc: ADM/2010MaintenanceSrvAgree't		InvAmt:	\$509.78	
ChqNo:	042583	Date:	1/21/2010	Vendor:	Bush Enterprise	Amount:	\$189.00
	InvNo: INV 01122		InvDesc: REC/AVSrv&InspctnPoolRftpUnit		InvAmt:	\$189.00	
ChqNo:	042584	Date:	1/21/2010	Vendor:	Chalmers Fuels Inc	Amount:	\$1,536.96
	InvNo: INV 352128		InvDesc: BW DieselFuelDyed		InvAmt:	\$68.84	
	InvNo: INV 352129		InvDesc: BW DieselFuelClear		InvAmt:	\$1,130.78	
	InvNo: INV 351031		InvDesc: BW FurnaceFuelDyed		InvAmt:	\$337.34	
ChqNo:	042585	Date:	1/21/2010	Vendor:	Clark Dale	Amount:	\$150.00
	InvNo: 2010SAFETYBOOTALLOW		InvDesc: BW 2010 Safety Boot Allowance		InvAmt:	\$150.00	
ChqNo:	042586	Date:	1/21/2010	Vendor:	Corporate Express	Amount:	\$458.58
	InvNo: INV 24218393		InvDesc: ADM/BW/WWPprBndrsBulbsFlFldrs		InvAmt:	\$487.06	
ChqNo:	042587	Date:	1/21/2010	Vendor:	Dewar Services	Amount:	\$567.52
	InvNo: INV 9610		InvDesc: FIRE/MF KeithRawnFireCalls2009		InvAmt:	\$592.20	
ChqNo:	042588	Date:	1/21/2010	Vendor:	Donald Bill	Amount:	\$150.00

Township of Wellington North  
 CHEQUE DISTRIBUTION REPORT  
 Payables Management

InvNo:	2010SAFETYBOOTALLOW	InvDesc:	2010 SafetyBootAllowance	InvAmt:	\$150.00
ChqNo:	042589	Date:	1/21/2010	Vendor:	Easto Builders Limited
				Amount:	\$808.40
InvNo:	TAXREFUND/R#10-026	InvDesc:	A/R TaxRefund/R#10-02600	InvAmt:	\$808.40
ChqNo:	042590	Date:	1/21/2010	Vendor:	Enterprise News
				Amount:	\$36.00
InvNo:	2010 SUBSCRIPTION	InvDesc:	ADM/2010Subscription	InvAmt:	\$36.00
ChqNo:	042591	Date:	1/21/2010	Vendor:	Evans Utility & Mun Products
				Amount:	\$543.42
InvNo:	INV 0000135696	InvDesc:	WW 4*FLG/Hndwheel/NutWshr	InvAmt:	\$543.42
ChqNo:	042592	Date:	1/21/2010	Vendor:	FOXTON FUELS LIMITED
				Amount:	\$88.59
InvNo:	INV 46214	InvDesc:	WW Purity PG White Oil 20L	InvAmt:	\$88.59
ChqNo:	042593	Date:	1/21/2010	Vendor:	Frey Communications
				Amount:	\$207.92
InvNo:	INV 4127	InvDesc:	WW/SS/BW Laserjet	InvAmt:	\$207.92
ChqNo:	042594	Date:	1/21/2010	Vendor:	FURMANEK, PAWEL
				Amount:	\$484.80
InvNo:	TAXREFUND/R#15-03200	InvDesc:	A/R TaxRefund/R#15-03200	InvAmt:	\$484.80
ChqNo:	042595	Date:	1/21/2010	Vendor:	Go Glass & Accessories
				Amount:	\$314.68
InvNo:	INV BR-116-103220	InvDesc:	BW ReplaceWindshield	InvAmt:	\$229.93
InvNo:	INV BR-116-103221	InvDesc:	BW WinshieldRepairs(2)	InvAmt:	\$84.75
ChqNo:	042596	Date:	1/21/2010	Vendor:	Gord Davenport Automotive Inc
				Amount:	\$12.80
InvNo:	INV 14415-14353	InvDesc:	BW WindshieldWasher	InvAmt:	\$12.80
ChqNo:	042597	Date:	1/21/2010	Vendor:	Harold Jones Enterprises
				Amount:	\$1,582.00
InvNo:	INV 646149	InvDesc:	BW PUsed252MillerWelder	InvAmt:	\$1,582.00
ChqNo:	042598	Date:	1/21/2010	Vendor:	Herriot Marlin
				Amount:	\$150.00
InvNo:	2010SAFETYBOOTALLOW	InvDesc:	BW 2010SafetyBootAllowance	InvAmt:	\$150.00
ChqNo:	042599	Date:	1/21/2010	Vendor:	Hill David
				Amount:	\$150.00
InvNo:	2010SAFETYBOOTALLOW	InvDesc:	BW 2010SafetyBootAllowance	InvAmt:	\$150.00
ChqNo:	042600	Date:	1/21/2010	Vendor:	HOLLIDAY, GORDON
				Amount:	\$1,866.13
InvNo:	TAXREFUND/R#1-16000	InvDesc:	A/R TaxRefund/R#1-16000	InvAmt:	\$1,866.13
ChqNo:	042601	Date:	1/21/2010	Vendor:	HOLTZ, CHADWICH
				Amount:	\$387.62
InvNo:	TAXREFUND/R#10-14100	InvDesc:	A/R TaxRefund/R#10-14100	InvAmt:	\$387.62
ChqNo:	042602	Date:	1/21/2010	Vendor:	Huronia Welding
				Amount:	\$689.92
InvNo:	INV L1198260	InvDesc:	BW 2010Lease	InvAmt:	\$689.92
ChqNo:	042603	Date:	1/21/2010	Vendor:	Hydro One Networks Inc.
				Amount:	\$779.35
InvNo:	18820-44001 JAN/10	InvDesc:	BW/ADM Kenilworth Jan12/10bill	InvAmt:	\$779.35
ChqNo:	042604	Date:	1/21/2010	Vendor:	Ideal Supply Company Limited
				Amount:	\$49.21
InvNo:	INV 1765391	InvDesc:	WW EyewashSolution 1L (2)	InvAmt:	\$35.85
InvNo:	INV 1759194	InvDesc:	BW Compressor LUB 1L	InvAmt:	\$10.21
InvNo:	INV 1762707	InvDesc:	BW PowerSteeringFluid	InvAmt:	\$3.15
ChqNo:	042605	Date:	1/21/2010	Vendor:	IRVINE, MELISSA
				Amount:	\$150.00
InvNo:	2010SAFETYBOOTALLOW	InvDesc:	WW/SS 2010SafetyBootAllowance	InvAmt:	\$150.00
ChqNo:	042606	Date:	1/21/2010	Vendor:	John W. Jeffery
				Amount:	\$136.51
InvNo:	JAN/10 MILEAGE	InvDesc:	ADM Jan18/10InsuranceMtgMileag	InvAmt:	\$136.51
ChqNo:	042607	Date:	1/21/2010	Vendor:	Kimbal Printing
				Amount:	\$924.40
InvNo:	INV 50064	InvDesc:	ADM Envelopes	InvAmt:	\$924.40
ChqNo:	042608	Date:	1/21/2010	Vendor:	Kwik Snaks Ltd
				Amount:	\$820.48
InvNo:	INV 154676	InvDesc:	REC/AV GatoradeChipsNapkins	InvAmt:	\$288.29
InvNo:	INV 154657	InvDesc:	REC/MF GatoradeFriesOilBars	InvAmt:	\$532.19
ChqNo:	042609	Date:	1/21/2010	Vendor:	LAROS, CORNELIS
				Amount:	\$1,900.00
InvNo:	ENTRANCE RFND09-0186	InvDesc:	A/REntranceRefund/Laros09-0186	InvAmt:	\$1,900.00
ChqNo:	042610	Date:	1/21/2010	Vendor:	Lehman Glen
				Amount:	\$150.00
InvNo:	2010SAFETYBOOTALLOW	InvDesc:	BW 2010SafetyBootAllowance	InvAmt:	\$150.00
ChqNo:	042611	Date:	1/21/2010	Vendor:	Long's Home Hardware
				Amount:	\$195.70
InvNo:	INV 2222672	InvDesc:	BW/ToiletTissueLdnryDtrgnt	InvAmt:	\$54.76
InvNo:	INV 2222389	InvDesc:	PROP/AVMunOffc Lights/Bulbs	InvAmt:	\$33.87

Township of Wellington North  
 CHEQUE DISTRIBUTION REPORT  
 Payables Management

InvNo:	INV 222602	InvDesc:	REC/AV VacBags/FurnaceFilters	InvAmt:	\$107.07		
ChqNo:	042612	Date:	1/21/2010	Vendor:	M & L Supply	Amount:	\$7,207.28
InvNo:	INV 0000116279	InvDesc:	FIRE/MF Bunkersuits (4)	InvAmt:	\$7,207.28		
ChqNo:	042613	Date:	1/21/2010	Vendor:	Manion John	Amount:	\$410.00
InvNo:	JAN2010 LIVESTOCK CL	InvDesc:	ANIMAL LivestockClaimJan2010	InvAmt:	\$410.00		
ChqNo:	042614	Date:	1/21/2010	Vendor:	Marcc Apparel Company	Amount:	\$78.75
InvNo:	INV 47679	InvDesc:	FIRE/MF Decals (225)	InvAmt:	\$78.75		
ChqNo:	042615	Date:	1/21/2010	Vendor:	Matthews Gary	Amount:	\$150.00
InvNo:	2010SAFETYBOOTALLOW	InvDesc:	BW 2010SafetyBootAllowance	InvAmt:	\$150.00		
ChqNo:	042616	Date:	1/21/2010	Vendor:	McGilloway Doug	Amount:	\$150.00
InvNo:	2010SAFETYBOOTALLOW	InvDesc:	BW 2010SafetyBootAllowance	InvAmt:	\$150.00		
ChqNo:	042617	Date:	1/21/2010	Vendor:	McLellan Norman M	Amount:	\$150.00
InvNo:	2010SAFETYBOOTALLOW	InvDesc:	BW 2010 Safety Boot Allowance	InvAmt:	\$150.00		
ChqNo:	042618	Date:	1/21/2010	Vendor:	McNabb Dan	Amount:	\$150.00
InvNo:	2010SAFETYBOOTALLOW	InvDesc:	BW 2010SafetyBootAllowance	InvAmt:	\$150.00		
ChqNo:	042619	Date:	1/21/2010	Vendor:	Mount Forest Motors	Amount:	\$183.63
InvNo:	INV 1605	InvDesc:	FIRE/MF AnnualSafetyStckerInsp	InvAmt:	\$183.63		
ChqNo:	042620	Date:	1/21/2010	Vendor:	Morrison Andy	Amount:	\$150.00
InvNo:	2010SAFETYBOOTALLOW	InvDesc:	BW 2010SafetyBootAllowance	InvAmt:	\$150.00		
ChqNo:	042621	Date:	1/21/2010	Vendor:	Neopost Canada Ltd.	Amount:	\$271.20
InvNo:	INV 1741840	InvDesc:	ADM ScaleOptionChangeRequest	InvAmt:	\$271.20		
ChqNo:	042622	Date:	1/21/2010	Vendor:	Noonan Tom	Amount:	\$150.00
InvNo:	2010SAFETYBOOTALLOW	InvDesc:	BW 2010SafetyBootAllowance	InvAmt:	\$150.00		
ChqNo:	042623	Date:	1/21/2010	Vendor:	Ontario Good Roads Association	Amount:	\$776.44
InvNo:	2010 MEMBERSHIP FEE	InvDesc:	COU 2010MembershipFee	InvAmt:	\$776.44		
ChqNo:	042624	Date:	1/21/2010	Vendor:	O.R.F.A. Inc.	Amount:	\$84.00
InvNo:	MUN.ALCOHOL POLICY	InvDesc:	REC/MunicipalAlcoholPolicyGuid	InvAmt:	\$84.00		
ChqNo:	042625	Date:	1/21/2010	Vendor:	PACKET WORKS	Amount:	\$395.50
InvNo:	INV PT-17044	InvDesc:	ADM Feb2010WirelessService	InvAmt:	\$395.50		
ChqNo:	042626	Date:	1/21/2010	Vendor:	Print One	Amount:	\$883.67
InvNo:	INV 1488	InvDesc:	ADM 2SidedTaxBills (5500)	InvAmt:	\$863.89		
InvNo:	INV 15042	InvDesc:	ADM 500 Lined Envelopes	InvAmt:	\$19.78		
ChqNo:	042627	Date:	1/21/2010	Vendor:	Reliance Protectron Inc.	Amount:	\$252.00
InvNo:	INV 15525918	InvDesc:	ADM/BW 2010AlarmMonitoring	InvAmt:	\$252.00		
ChqNo:	042628	Date:	1/21/2010	Vendor:	Robinson Jim	Amount:	\$2,835.00
InvNo:	SNOW REMOVAL JAN10	InvDesc:	BW ConnSnowRemoval	InvAmt:	\$2,835.00		
ChqNo:	042629	Date:	1/21/2010	Vendor:	Royal Bank Visa	Amount:	\$30.20
InvNo:	M.BROOMHEAD JAN/10	InvDesc:	COU Jan10meal&PrchsIntrst	InvAmt:	\$30.20		
ChqNo:	042630	Date:	1/21/2010	Vendor:	Schenk Darin	Amount:	\$150.00
InvNo:	2010SAFETYBOOTALLOW	InvDesc:	WW/SS/BW 2010SafetyBootAllow	InvAmt:	\$150.00		
ChqNo:	042631	Date:	1/21/2010	Vendor:	Schmidt Corey	Amount:	\$150.00
InvNo:	2010SAFETYBOOTALLOW	InvDesc:	WW/SS 2010SafetyBootAllowance	InvAmt:	\$150.00		
ChqNo:	042632	Date:	1/21/2010	Vendor:	Society of Composers, Authors	Amount:	\$438.25
InvNo:	ACCT153162408STMT38	InvDesc:	REC/AV Jan-Dec2010Provisional	InvAmt:	\$261.52		
InvNo:	ACCT188252406STMT39	InvDesc:	REC/MF Jan-Dec2010Provisional	InvAmt:	\$176.73		
ChqNo:	042633	Date:	1/21/2010	Vendor:	Superior Propane	Amount:	\$311.91
InvNo:	INV 64525158	InvDesc:	REC/DamascusCCBulkPropane	InvAmt:	\$512.48		
ChqNo:	042634	Date:	1/21/2010	Vendor:	SWORFA	Amount:	\$25.00
InvNo:	2010 MEMBERSHIP	InvDesc:	REC/MF&AV 2010Membership	InvAmt:	\$25.00		
ChqNo:	042635	Date:	1/21/2010	Vendor:	Trood Barry	Amount:	\$150.00
InvNo:	2010SAFETYBOOTALLOW	InvDesc:	WW/SS 2010SafetyBootAllowance	InvAmt:	\$150.00		
ChqNo:	042636	Date:	1/21/2010	Vendor:	Van Houtte Coffee Services	Amount:	\$285.36
InvNo:	INV 32180198-2010	InvDesc:	REC/MF Coffee/VendwhipPwdr&Crr	InvAmt:	\$285.36		

Township of Wellington North  
CHEQUE DISTRIBUTION REPORT  
Payables Management

ChqNo:	042637	Date:	1/21/2010	Vendor:	Wellington North Power	Amount:	\$122.88
InvNo:	00000168-00	JAN/10	InvDesc:	SL/AV George&Charles Jan2010	InvAmt:	\$61.44	
InvNo:	00000177-00	JAN/10	InvDesc:	SL/AV George&Frederick Jan2010	InvAmt:	\$61.44	
ChqNo:	042638	Date:	1/21/2010	Vendor:	Whetham Dan	Amount:	\$395.43
InvNo:	INV 100		InvDesc:	FIRE/MF ShelvingMaterial	InvAmt:	\$245.43	
InvNo:	2010SAFETYBOOTALLOW		InvDesc:	BW 2010SafetyBootAllowance	InvAmt:	\$150.00	
ChqNo:	042639	Date:	1/21/2010	Vendor:	White Ed	Amount:	\$150.00
InvNo:	2010SAFETYBOOTALLOW		InvDesc:	WW/SS 2010SafetyBootAllowance	InvAmt:	\$150.00	
ChqNo:	042640	Date:	1/21/2010	Vendor:	Williamson Gary	Amount:	\$150.00
InvNo:	2010SAFETYBOOTALLOW		InvDesc:	WW/SS/BW 2010SafetyBootAllow	InvAmt:	\$150.00	
ChqNo:	042641	Date:	1/21/2010	Vendor:	Yake Electric Ltd	Amount:	\$823.20
InvNo:	INV 2880		InvDesc:	REC/AV Rprs/NewWires/Lighting	InvAmt:	\$823.20	
ChqNo:	042642	Date:	1/21/2010	Vendor:	Young's Home Hardware Bldg Centre	Amount:	\$66.87
InvNo:	INV 208309		InvDesc:	REC/MF Knives/AudKitchen&Snack	InvAmt:	\$66.87	

\*\*\* End of Report \*\*\*

**Report Total:**

**\$263,033.07**

**THE CORPORATION OF THE  
TOWNSHIP OF WELLINGTON NORTH**

**BY-LAW NUMBER 11-10**

**BEING A BY-LAW TO CONFIRM THE PROCEEDINGS OF THE  
COUNCIL OF THE CORPORATION OF THE TOWNSHIP OF  
WELLINGTON NORTH AT ITS REGULAR MEETING HELD ON  
JANUARY 25, 2010.**

**AUTHORITY: Municipal Act, 2001, S.O. 2001, c.25, as amended, Sections 5(3) and 130.**

**WHEREAS** the Municipal Act, 2001, S.O. 2001, c.25, as amended, Section 5(3), provides that the jurisdiction of every council is confined to the municipality that it represents and its powers shall be exercised by by-law.

**AND WHEREAS** the Municipal Act, 2001, S.O. 2001, c.25, as amended, Section 130 provides that every council may pass such by-laws and make such regulations for the health, safety and well-being of the inhabitants of the municipality in matters not specifically provided for by this Act and for governing the conduct of its members as may be deemed expedient and are not contrary to law.

**NOW THEREFORE** the Council of The Corporation of the Township of Wellington North hereby **ENACTS AS FOLLOWS:**

1. That the action of the Council at its Regular Meeting held on January 25, 2010 in respect to each report, motion, resolution or other action passed and taken by the Council at its meeting, is hereby adopted, ratified and confirmed, as if each resolution or other action was adopted, ratified and confirmed by separate by-law.
2. That the Mayor and the proper officers of the Township are hereby authorized and directed to do all things necessary to give effect to the said action, or to obtain approvals where required, and, except where otherwise provided, the Mayor and the Clerk are hereby directed to execute all documents necessary in that behalf and to affix the corporate seal of the Township to all such documents.
3. That this by-law, to the extent to which it provides authority for or constitutes the exercise by the Council of its power to proceed with, or to provide any money for, any undertaking work, project, scheme, act, matter or thing referred to in subsection 65 (1) of the Ontario Municipal Board Act, R.S.O. 1990, Chapter 0.28, shall not take effect until the approval of the Ontario Municipal Board with respect thereto, required under such subsection, has been obtained.
4. That any acquisition or purchase of land or of an interest in land pursuant to this by-law or pursuant to an option or agreement authorized by this by-law, is conditional on compliance with Environmental Assessment Act, R.S.O. 1990, Chapter E.18.

**READ A FIRST, SECOND AND THIRD TIME AND FINALLY PASSED  
THIS 25TH DAY OF JANUARY, 2010.**

---

**MICHAEL BROOMHEAD,  
MAYOR**

---

**LORRAINE HEINBUCH  
CHIEF ADMINISTRATIVE OFFICER/CLERK**

## **MEETINGS, NOTICES, ANNOUNCEMENTS**

Fire Committee	Tuesday, January 26, 2010	7:00 p.m.
Building/Property Committee	Wednesday, January 27, 2010	9:00 a.m.
Regular Council	Monday, February 1, 2010	7:00 p.m.
Regular Council	Monday, February 8, 2010	7:00 p.m.

**The following accessibility services can be made available to residents upon request with two weeks notice:**

**Sign Language Services – Canadian Hearing Society – 1-800-668-5815**

**Documents in alternate forms – CNIB – 1-866-797-1312**